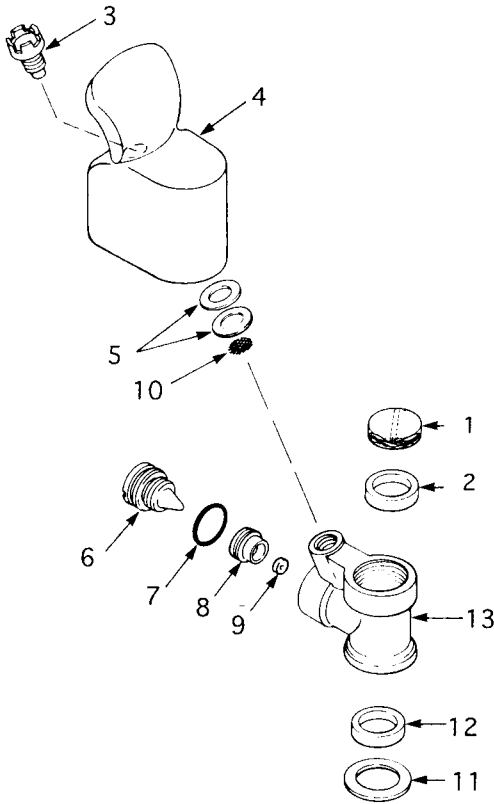


EBCO MODEL 12000 A VALVE

CONTINUOUS FLOW VERSION

030774-004



ORDER BY THIS PART NUMBER & DESCRIPTION

FIG. NO.	EBCO PART NO.	DESCRIPTION
1.	011822	Plug
2.	028706-017	Washer
3.	030562-001	Nozzle & Straightener Assy
4.	026316-002	Guard, Plastic Chrome
5.	028706-012	Washer
6.	030505-001	Adjusting Needle
7.	030858-103	O-ring
8.	030504-002	Flow Washer Retainer
9.	030028-002	Flow Washer
10.	030560-001	Screen
11.	028706-013	Friction Washer
12.	028706-006	Gasket
13.	030773-001	Valve Body Assy (includes 6 to 9, & 13)

Instructions To Order:

1. Determine the part required to repair your valve-use the part number and the description when ordering .
Do not use the figure number!
2. The parts listed are available from most Ebco distributors, approved service centers, or the factory.

Adjustment Instructions:

1. To remove the bubbler guard (Fig. 4), use a screwdriver to remove nozzle (Fig. 3). Lift off bubbler guard.
2. Stream regulation - stream height should be 5 1/2". To regulate, with bubbler guard removed, replace the nozzle assembly in the valve body (Fig. 13). Turn the

adjusting needle (Fig. 6) clockwise to lower stream or counter-clockwise to raise stream.

3. After adjustment is completed, remove nozzle ass'y, place plastic washers (Fig. 5) on valve nozzle hole, replace bubbler guard and nozzle.

Note:

If you should re-assemble Figures 6 through 9 at any time, make sure you install flow washer (Fig. 9) with the letters or numbers on it visible after assembled in flow washer retainer (Fig. 8).