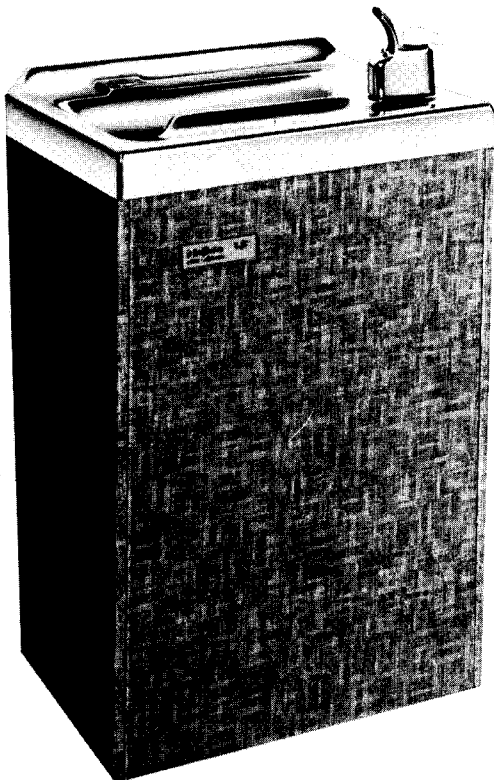


SERVICE INSTRUCTIONS

...with Illustrated Parts Breakdown

EBCO[®]

WATER COOLER MODEL: DP15MW-2



DESCRIPTION

This model provides drinking water cooled to 50°F at 15 gallons per hour. The unit mounts on a wall and requires connections to supply water, electrical power and waste drain.

The refrigeration system is hermetically sealed at manufacture and is generally considered to be non-field-serviceable. The air-cooled compressor pumps refrigerant thru the water-cooled condenser and capillary tube (expansion valve) to the cooling tank evaporator. The evaporator is wrapped around the cooling tank for high efficiency. A pre-cooler routes supply water around cold drain water to cool incoming water.

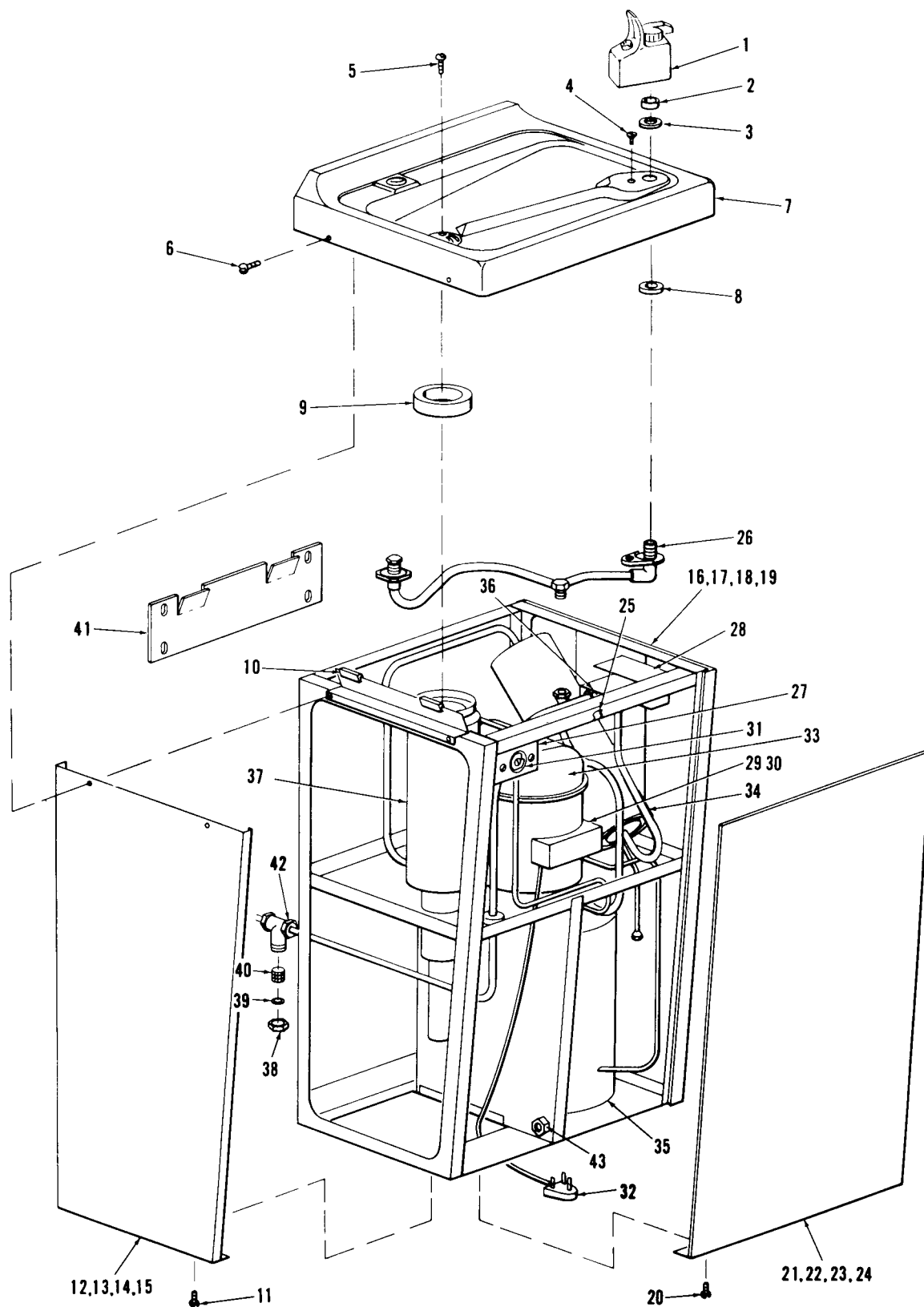
The electrical circuit includes automatic overload protection, an adjustable cold control for water temperature regulation, and a thermostatically controlled water shutoff valve to maintain required condenser cooling.

SPECIFICATIONS

Voltage	115 VAC $\pm 10\%$ /1 Ph./60 cycles (Hertz)
Size	26" H., 17" W., 14" D.
Shipping Weight (Approx.)	84 lbs.
Cold Water Capacity*	15 GPH
Cold Water Compressor	1/3 H. P.
Cold Water Compressor	6.5 Amps
Refrigerant Charge	5 oz., R12

*A.R.I. Rating: Room Temp. 90°F.; Supply Water Temp. 80°F.; Drinking Water Temp. 50°F.

Specifications subject to change without notice.



MODEL: DP15MW-2

PARTS LIST

Fig. No.	Part No.	Description	Qty.	Fig. No.	Part No.	Description	Qty.
TOP BASIN							
1	**12000	Bubbler Valve Assembly	1	6	*12482	Screw, #8 x 3/8", S.S.	4
2	8983	Bubbler Valve Gasket	1	7	17930	Top Basin	1
3	9281	Plastic Friction Washer	1	8	10545	Undertop Gasket	1
4	*17335	Screw, #8-32 x 1/2", S.S.	1	9	18050	Waste Gasket	1
5	*15694	Screw, #8-32 x 1-1/4", Brass	1				
CABINET							
10	11641	Top Pad	4	19	19578 R.H.	Right Side Panel (Walnut)	1
11	*17054	Screw, #8 x 3/8"	4	20	*17054	Screw, #8 x 3/8"	2
12	19575 L.H.	Left Side Panel (Chestnut Tweed)	1	21	19644	Front Panel (Chestnut Tweed)	1
13	19576 L.H.	Left Side Panel (Charcoal Tweed)	1	22	19645	Front Panel (Charcoal Tweed)	1
14	19577 L.H.	Left Side Panel (Stainless)	1	23	19646	Front Panel (Stainless)	1
15	19578 L.H.	Left Side Panel (Walnut)	1	24	19647	Front Panel (Walnut)	1
16	19575 R.H.	Right Side Panel (Chestnut Tweed)	1	25	18156	Cable Clip	1
17	19576 R.H.	Right Side Panel (Charcoal Tweed)	1	26	18514	Top Supply Assembly	1
18	19577 R.H.	Right Side Panel (Stainless)	1	27	19012	Control Mount Bracket	1
				28	19583	Water Valve Mount Bracket	1
ELECTRICAL							
29	19434	Starting Relay	1	31	18956	Cold Control	1
30	19603	Overload Protector	1	32	19017	Service Cord (3 Wire with Ground)	1
REFRIGERATION							
33	19602	Compressor Assembly (Includes items 29 & 30)	1	36	18567	Condenser Water Regulating Valve	1
34	19580	Water Cooled Condenser	1	37	19579	Pre-Cooler Assembly	1
35	19581	Cooling Tank Assembly	1				
MISCELLANEOUS							
38	1462	Cap Nut	1	41	16698	Hanger	1
39	1472	Gasket	1	42	1800	Strainer Assembly	1
40	1762	Screen	1	43	16899	Cooling Tank Drain	1

* Standard Hardware - Purchase Locally

** See Accessory Sheet

THERMOSTAT
(COLD CONTROL)

THERMOSTAT
LEADS

COMPRESSOR

OVERLOAD
PROTECTOR

WHITE LEAD

WIRE JOINT

BLACK LEAD

GREEN LEAD GROUNDED
TO SHELF

START WINDING
TERMINAL

COMMON
TERMINAL

STARTING RELAY

MAIN WINDING
TERMINAL

SERVICE CORD

THERMOSTAT BULB
MUST BE FULLY AND
FIRMLY INSERTED.

COOLING TANK
THERMOWELL

THIS PIN ENGAGES A
GROUNDED TERMINAL
ON SUPPLY RECEPTACLE.

ELECTRICAL DIAGRAM

EBCO[®] MANUFACTURING COMPANY

265 N. Hamilton Rd. • P.O. Box 13150 • Columbus, OH 43213-0150 • 614/861-1350 • Cable: EBCO • Telex: 246637