



Illustrated Parts Breakdown

Models:

**ADAD8-D300, ADAD8BL-D300
& ADAD8RBL-D300**



SPECIFICATIONS:

Model: ADAD8-D300

Voltage	115VAC±10%/1 PH/60 Hertz
Size	18 3/8"H, 19"W, 18 5/8"D
Shipping Weight (Approx)	59 lbs.
Cold Water Capacity*	8 GPH
Compressor	1/4 hp
Compressor (Full Load)	4.6 amps
Refrigerant	134a
Refrigerant Charge	4.75 oz

Model: ADAD8BL-D300

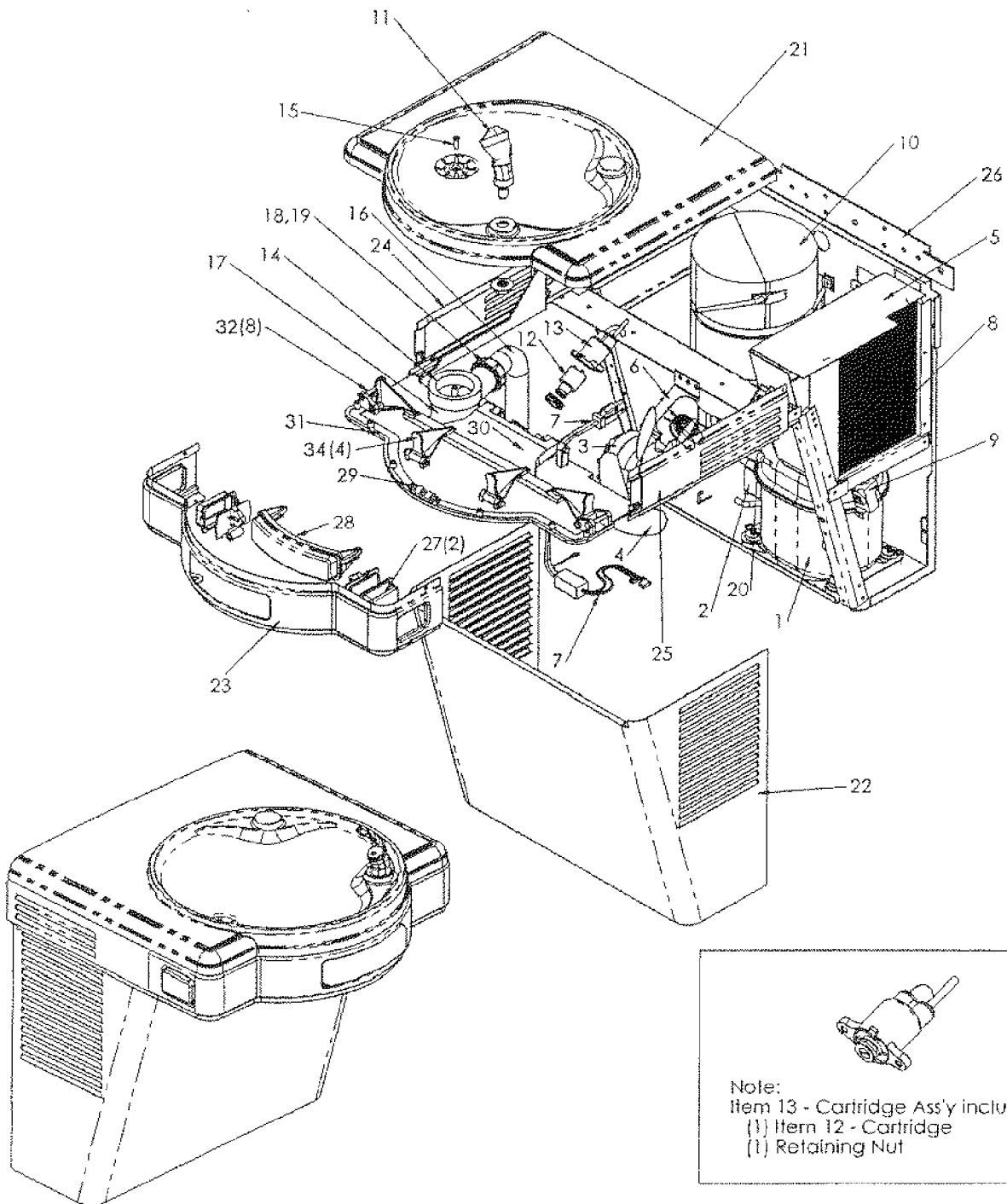
Voltage	115VAC±10%/1 PH/60 Hertz
Size	26 3/4"H, 38"W, 18 5/8"D
Shipping Weight (Approx)	84 lbs.
Cold Water Capacity*	8 GPH
Compressor	1/4 hp
Compressor (Full Load)	4.6 amps
Refrigerant	134a
Refrigerant Charge	4.75 oz

Model: ADAD8RBL-D300

Voltage	115VAC±10%/1 PH/60 Hertz
Size	26 3/4"H, 38"W, 18 5/8"D
Shipping Weight (Approx)	84 lbs.
Cold Water Capacity*	8 GPH
Compressor	1/4 hp
Compressor (Full Load)	4.6 amps
Refrigerant	134a
Refrigerant Charge	4.75 oz

*A.R.I. Ratings: Room Temperature 90°F; Supply Water Temperature 80°F; Drinking Water Temperature 50°F.

Specifications subject to change without notice.



Item #	Description	ADAD8-D300	ADAD8BL-D300	ADAD8RBL-D300
--------	-------------	------------	--------------	---------------

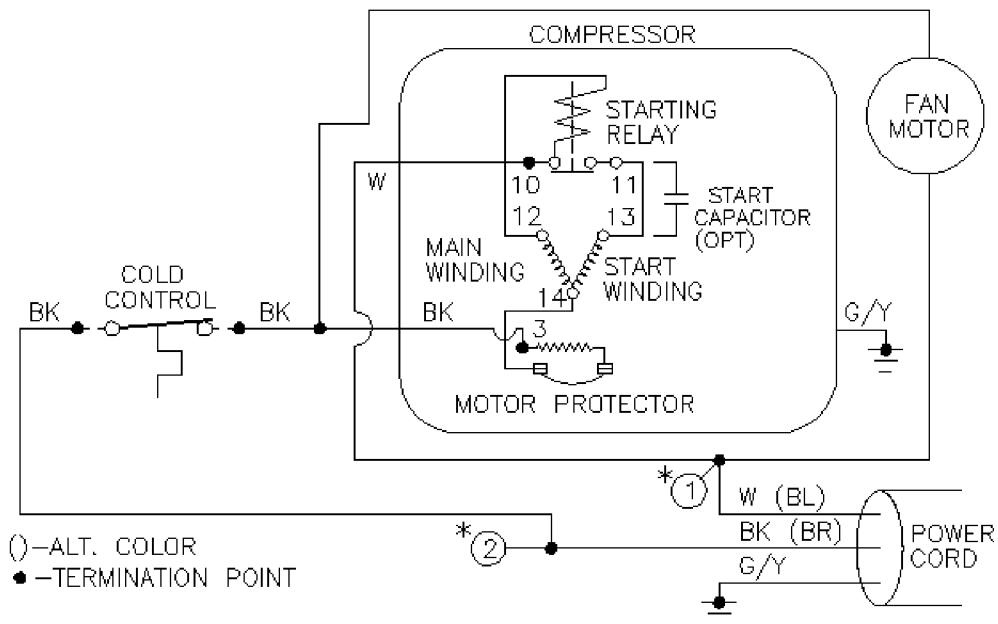
1	Compressor	033425-004	033425-004	033425-004
2	Relay/Overload	032836-007	032836-007	032836-007
3	Fan Motor	027354-036	027354-036	027354-036
4	Fan Blade	024033	024033	024033
5	Fan Shroud	031767-001	031767-001	031767-001
6	Fan Bracket	026969	026969	026969
7	Wall Cord	026540-045	026540-045	026540-045
8	Condenser	031766-001	031766-001	031766-001
9	Thermostat	027040-039	027040-039	027040-039
10	Evaporator Assembly	033469-001	033469-001	033469-001
11	Safety-Guard Spout Assy.	11432-SP	11432-SP	11432-SP
12	Cartridge	029967-002	029967-002	029967-002
13	Water Control Assembly	10947-N-SP	10947-N-SP	10947-N-SP
14	Drain Washer	A015671	A015671	A015671
15	Drain Screw	C026561-01	C026561-01	C026561-01
16	Tailpiece	A021316-01	N/A	N/A
	Tailpiece (Right Unit)	N/A	A021316-06	A021316-05
	Tailpiece (Left Unit)	N/A	A021316-05	A021316-06
17	Drain Adapter	C026553	C026553	C026553
18	Slip Joint Nut	A021322	A021322	A021322
19	Slip Joint Washer	A021324	A021324	A021324
20	Drier	034343-003	034343-003	034343-003
21	Stainless Steel Top	D036290	D036290	D036290
22	Wrapper Stainless Steel	201990-31	N/A	N/A
	Wrapper Granite	201990-40	N/A	N/A
	Wrapper Stainless Steel (Right Unit)	N/A	201992-31	201994-31
	Wrapper Granite (Right Unit)	N/A	201992-40	201994-40
	Wrapper Stainless Steel (Left Unit)	N/A	201991-31	201993-31
	Wrapper Granite (Left Unit)	N/A	201991-40	201993-40
23	Front Apron Stainless Steel	D036311-31	D036311-31	D036311-31
	Front Apron Granite	D036311-40	D036311-40	D036311-40
24	Left Panel Stainless Steel	D036315-31	D036315-31	D036315-31
	Left Panel Granite	D036315-40	D036315-40	D036315-40
25	Right Panel Stainless Steel	D036314-31	D036314-31	D036314-31
	Right Panel Granite	D036314-40	D036314-40	D036314-40
26	Hanger Bracket	031363-002	031363-002	031363-002
27	Side Handle Mechanism	200194	200194	200194
28	Front Handle Mechanism	C026543-01	C026543-01	C026543-01
29	Front Panel Pin	A021301	A021301	A021301
30	Cartridge Rocker	D036357	D036357	D036357
31	Handle Rocker	C026546	C026546	C026546
32	Side Handle Pins	200068	200068	200068

Parts Not Shown

Strainer, In-Line	033264-003	033264-003	033264-003
Tee, Nuts, Washer	N/A	A020968	A020968
Elbow, Nuts, Washer	N/A	A020967	A020967
Waste Tube Extension	N/A	A020606	A020606
Waste Arm Extension	N/A	A021316-02	A021316-02

Electrical Diagram

ADAD8-D300, ADAD8BL-D300 & ADAD8RBL-D300



TRI PALM INTERNATIONAL, LLC

265 N. Hamilton Road - P.O. Box 13150 - Columbus, OH 43213-0150 U.S.A.

614/861-1350 - Fax: 614/322-4557

www.tripalmint.com