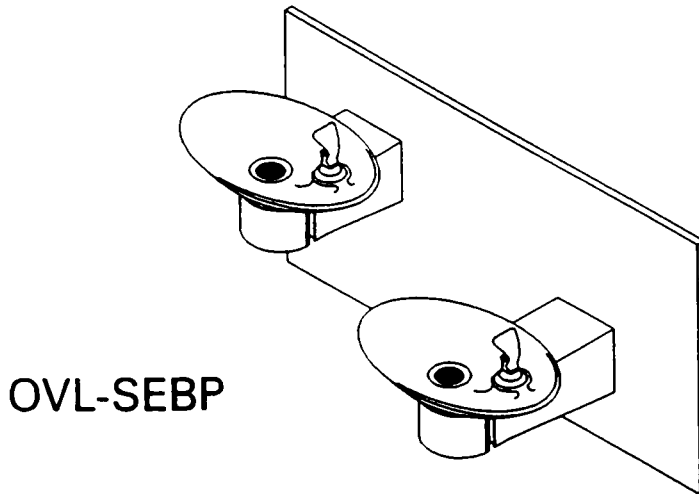


Halsey Taylor Owners Manual

Models: OVL-EBP, OVL-SBP, OVL-SEBP

Non-Refrigerated Fountains with Back Panels



Installer

To assure you install this model easily and correctly,
**PLEASE READ THESE SIMPLE INSTRUCTIONS BEFORE STARTING THE
INSTALLATION. CHECK YOUR INSTALLATION FOR COMPLIANCE WITH
PLUMBING, ELECTRICAL AND OTHER APPLICABLE CODES.** After install-
ation, leave these instructions inside the cooler for future reference.

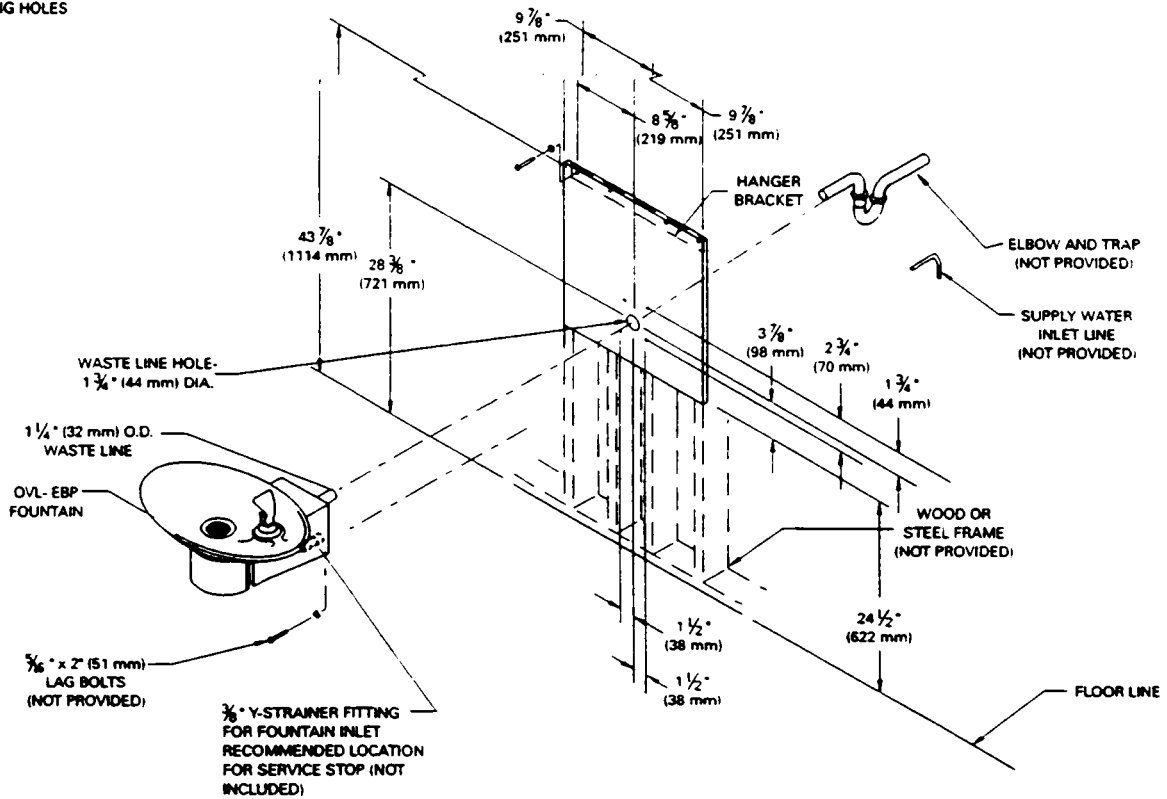
IMPORTANT

ALL SERVICE TO BE PERFORMED BY AN AUTHORIZED SERVICE PERSON

Installation: OVL-EBP	Page 2
Installation: OVL-SBP	Page 3
Installation: OVL-SEBP	Page 4
Parts List: OVL-EBP, OVL-SBP and OVL-SEBP	Page 7
Care of Golden Bronzestone Models	Page 8

DIMENSIONS SHOWN LOCATE WASTE LINE HOLE. 1 1/4" (32 mm) DIA. HOLE. INLET LINE. 3/8" (22 mm) DIA. HOLE. HANGER BRACKET AND FOUNTAIN MOUNTING HOLES

OVL-EBP BARRIER-FREE FOUNTAIN WITH BACK PANEL



* 24 1/2" (622 mm) required to obtain a projector orifice height of 35 3/4" (908 mm) for wheelchair users. When installing this unit, LOCAL, STATE and FEDERAL CODES should be adhered to and dimensions adjusted accordingly.

OPERATING PRESSURE:
Supply water - 90 PSI Maximum

FIG. 1

1. Wall should already be framed for the fountain using the positioning dimensions shown in Figure 1. Shown dimensions pertain to installation location (framing must support up to 150 lbs. weight). These dimensions are required for compliance with ANSI Standard A117.0 (Framing shown for reference only).
2. Make wall access cutout as shown in Figure 2. Be sure that bottom surface is level to the floor and will not protrude below bottom edge of back panel.
3. Attach hanger bracket to wall and level as shown in Figure 1. Using four (4) 5/16" x 2" (51 mm) long bolts and flat washers (not provided). Tighten securely.
4. Install back panel. Place the upper edge of the panel above hanger on the wall. Slide the panel down until it engages the hanger. Be sure back panel is firmly engaged before releasing it.
5. Install rough-in plumbing as shown in Figure 1. Waste line should extend a minimum of 2" (51 mm) through the back panel. Run supply water inlet line through back panel. Install a service stop (not provided). Turn on supply water and flush thoroughly.
6. Remove bottom access panel from fountain basin and save the screws. Install the fountain to the back panel and wall using four (4) 5/16" x 2" (51 mm) long lag bolts and washers (not provided) through holes in back panel. Tighten securely.
7. Cut waste tube to required length using plumbing hardware and trap (not provided) as a guide. Install hardware and trap. Tighten securely.

8. Make water supply connections from service stop to the fountain Y-strainer. Insert water line to positive stop approximately 3/4" (19 mm) on inlet side of Y-strainer. (See figure 8). Turn on water supply and check for leaks. Newly installed water supply line should be insulated after leak check is completed.
9. Check stream height from bubbler. Stream height is factory set at 45 - 50 PSI. If supply pressure varies greatly from this, adjust screw on regulator. Clockwise adjustment will raise stream height and CCW adjustment will lower stream height. For best adjustment stream height should be approximately 1 1/2" (38 mm) above the bubbler guard.
10. Replace bottom access panel to fountain basins using screws provided. Tighten securely.

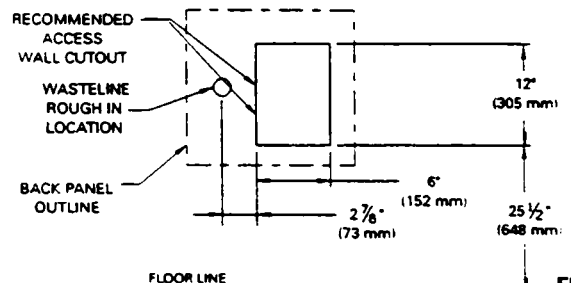
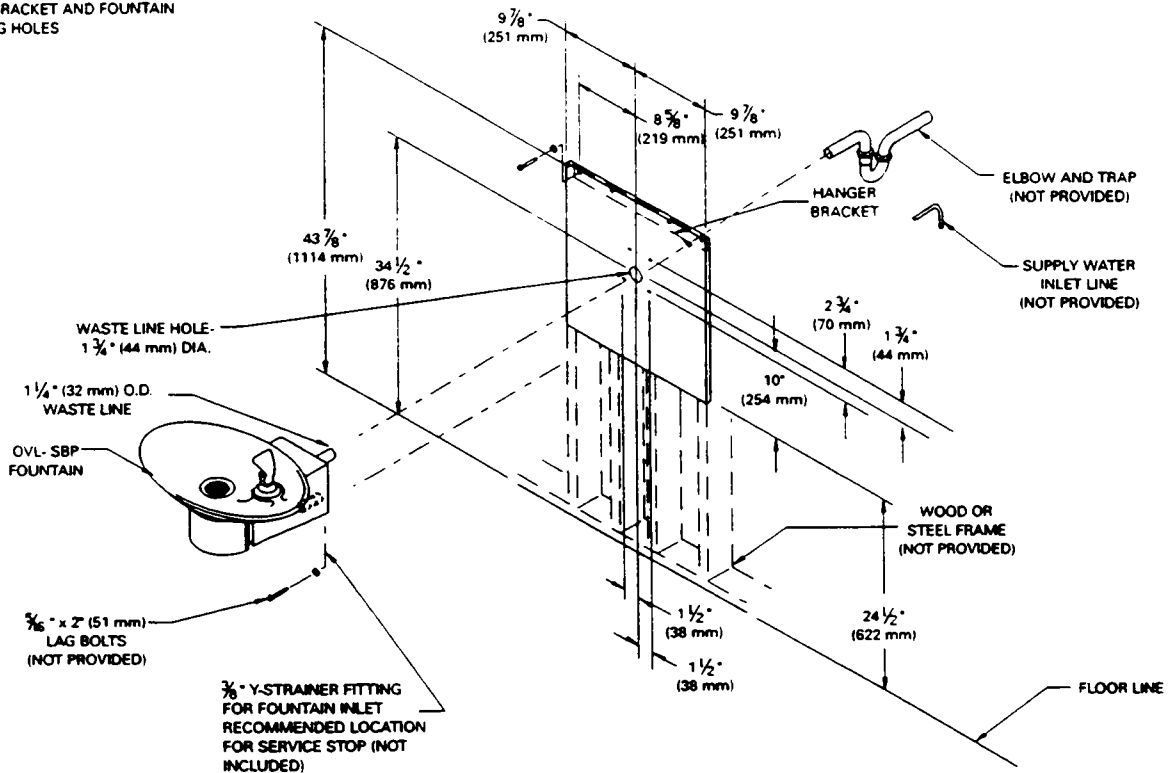


FIG. 2

DIMENSIONS SHOWN LOCATE WASTE LINE HOLE, $1\frac{1}{4}$ " (32 mm) DIA. HOLE, INLET LINE, $\frac{7}{8}$ " (22 mm) DIA. HOLE, HANGER BRACKET AND FOUNTAIN MOUNTING HOLES

OVL-SBP FACE MOUNTED FOUNTAIN WITH BACK PANEL



OPERATING PRESSURE:
Supply water - 90 PSI Maximum

When installing this unit, LOCAL, STATE and FEDERAL CODES should be adhered to and dimensions adjusted accordingly.

FIG. 3

1. Wall should already be framed for the fountain using the positioning dimensions shown in Figure 3. Shown dimensions pertain to installation location (framing must support up to 150 lbs. weight). These dimensions are required for compliance with ANSI Standard A117.0 (Framing shown for reference only).
2. Make wall access cutout as shown in Figure 4. Be sure that bottom surface is level to the floor and will not protrude below bottom edge of back panel.
3. Attach hanger bracket to wall and level as shown in Figure 3. Using four (4) $\frac{5}{16}$ " x 2" (51 mm) long bolts and flat washers (not provided). Tighten securely.
4. Install back panel. Place the upper edge of the panel above hanger on the wall. Slide the panel down until it engages the hanger. Be sure back panel is firmly engaged before releasing it.
5. Install rough-in plumbing as shown in Figure 3. Waste line should extend a minimum of 2" (51 mm) through the back panel. Run supply water inlet line through back panel. Install a service stop (not provided). Turn on supply water and flush thoroughly.
6. Remove bottom access panel from fountain basin and save the screws. Install the fountain to the back panel and wall using four (4) $\frac{5}{16}$ " x 2" (51 mm) long lag bolts and washers (not provided) through holes in back panel. Tighten securely.
7. Cut waste tube to required length using plumbing hardware and trap (not provided) as a guide. Install hardware and trap. Tighten securely.

8. Make water supply connections from service stop to the fountain Y-strainer. Insert water line to positive stop approximately $\frac{3}{4}$ " (19 mm) on inlet side of Y-strainer. (See figure 8). Turn on water supply and check for leaks. Newly installed water supply line should be insulated after leak check is completed.
9. Check stream height from bubbler. Stream height is factory set at 45 - 50 PSI. If supply pressure varies greatly from this, adjust screw on regulator. Clockwise adjustment will raise stream height and CCW adjustment will lower stream height. For best adjustment stream height should be approximately $1\frac{1}{2}$ " (38 mm) above the bubbler guard. (See Figure 7 and 9 on page 5)
10. Replace bottom access panel to fountain basins using screws provided. Tighten securely.

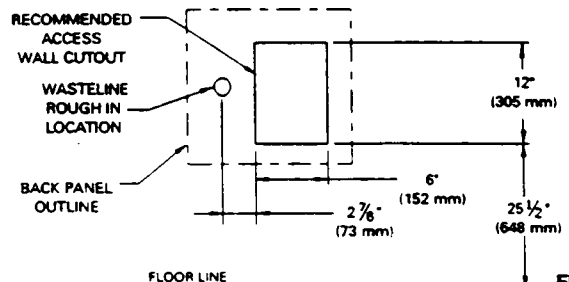
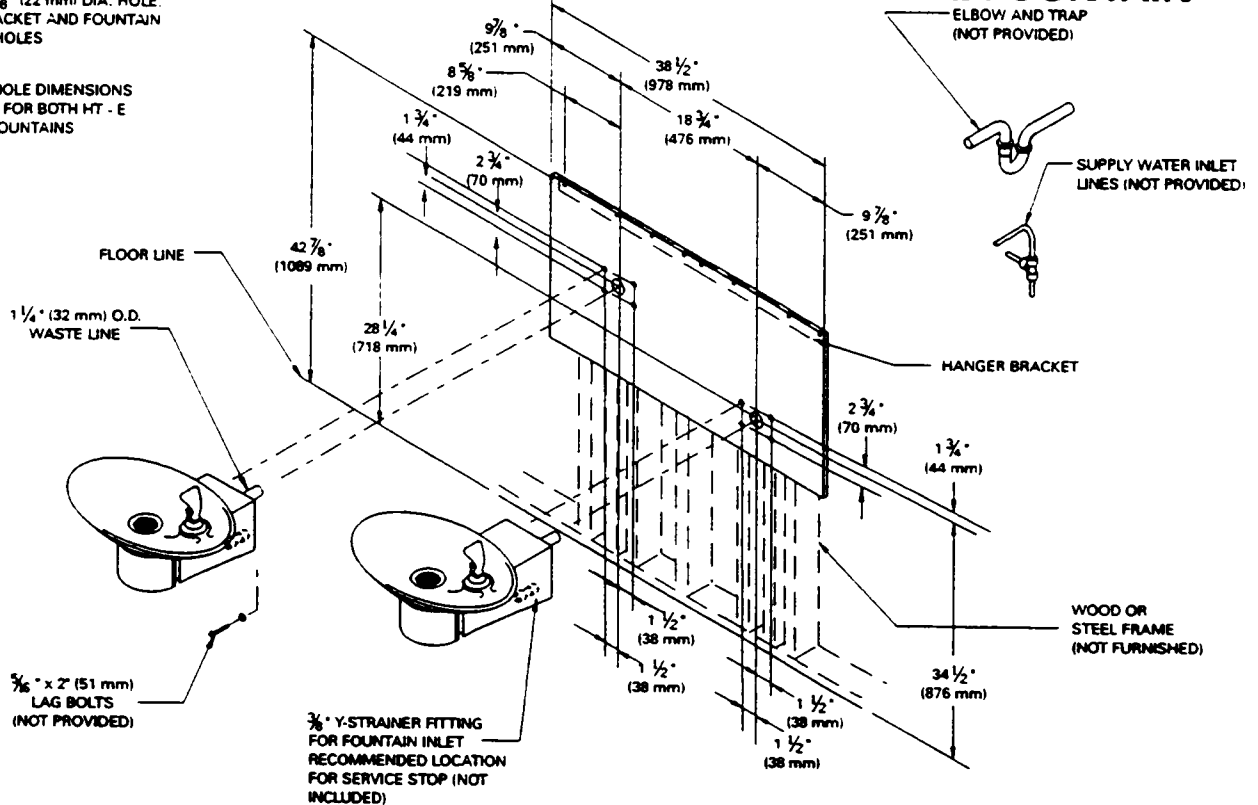


FIG. 4

DIMENSIONS SHOWN LOCATE WASTE LINE HOLE. $1\frac{1}{4}$ " (32 mm) DIA. HOLE. INLET LINE. $\frac{7}{8}$ " (22 mm) DIA. HOLE. HANGER BRACKET AND FOUNTAIN MOUNTING HOLES

NOTE:
MOUNTING HOLE DIMENSIONS ARE TYPICAL FOR BOTH HT - E AND HT - S FOUNTAINS

OVL-SEBP BARRIER-FREE BI-LEVEL FOUNTAIN



* $24\frac{1}{2}$ " (622 mm) required to obtain a projector orifice height of $35\frac{3}{4}$ " (908 mm) for wheelchair users. When installing this unit, LOCAL, STATE and FEDERAL CODES should be adhered to and dimensions adjusted accordingly.

OPERATING PRESSURE:
Supply water - 90 PSI Maximum

FIG. 5

1. Wall should already be framed for the fountains using the positioning dimensions shown in Figure 5. Shown dimensions pertain to installation location (framing must support up to 300 lbs. weight). These dimensions are required for compliance with ANSI Standard A117.0 (Framing shown for reference only).
2. Make wall access cutout as shown in Figure 6. Be sure that bottom surface is level to the floor and will not protrude below bottom edge of back panel.
3. Attach hanger bracket to wall and level as shown in Figure 5. Using four (4) $\frac{5}{16}$ " x 2" (51 mm) long bolts and flat washers (not provided). Tighten securely.
4. Install back panel. Place the upper edge of the panel above hanger on the wall. Slide the panel down until it engages the hanger. Be sure back panel is firmly engaged before releasing it.
5. Install rough-in plumbing as shown in Figure 5. Waste lines should extend a minimum of 2" (51 mm) through the back panel. Run supply water inlet lines through back panel. Install service stops (not provided). Turn on supply water and flush thoroughly.
6. Remove bottom access panels from fountain basin and save the screws. Install the fountains to the back panel and wall using four (4) $\frac{5}{16}$ " x 2" (51 mm) long lag bolts and washers (not provided) for each fountain through holes in back panel. Tighten securely.
7. Cut waste tubes to required length using plumbing hardware and traps (not provided) as a guide. Install hardware and traps. Tighten securely.

8. Make water supply connections from service stop to the fountain Y-strainer. Insert water line to positive stop approximately $\frac{3}{4}$ " (19 mm) on inlet side of Y-strainer. (See figure 8). Turn on water supply and check for leaks. Newly installed water supply lines should be insulated after leak check is completed.
9. Check stream height from bubbler. Stream height is factory set at 45 - 50 PSI. If supply pressure varies greatly from this, adjust screw on regulator. Clockwise adjustment will raise stream height and CCW adjustment will lower stream height. For best adjustment stream height should be approximately $1\frac{1}{2}$ " (38 mm) above the bubbler guard.
10. Replace bottom access panels to fountain basins using screws provided. Tighten securely.

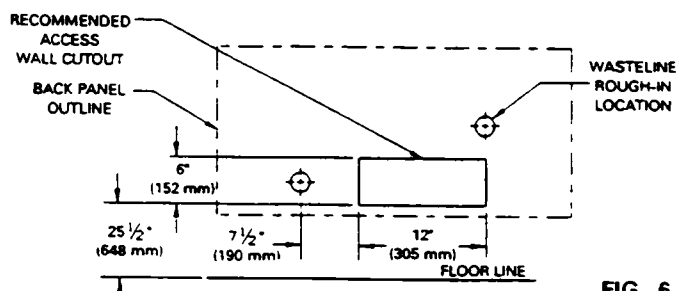
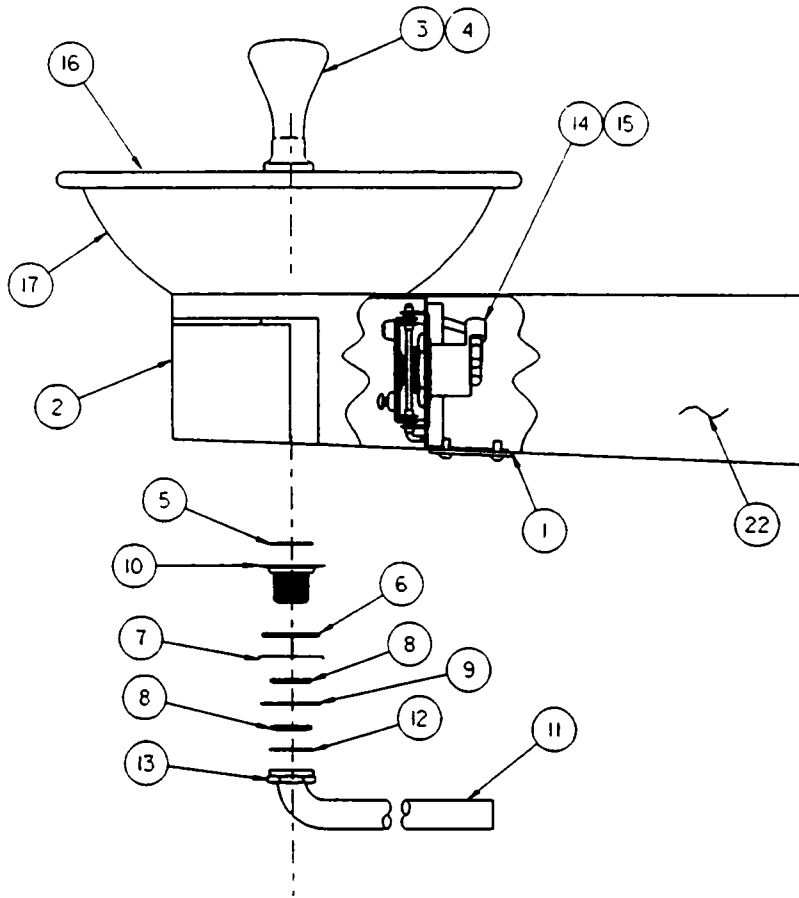


FIG. 6

OVL FOUNTAIN



PUSH BAR MECHANISM

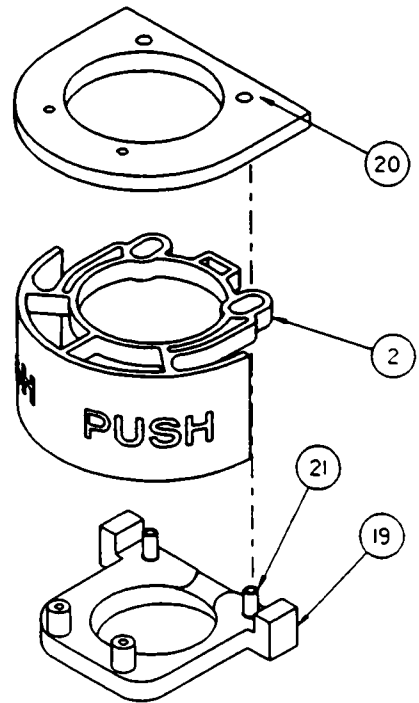


FIG. 7

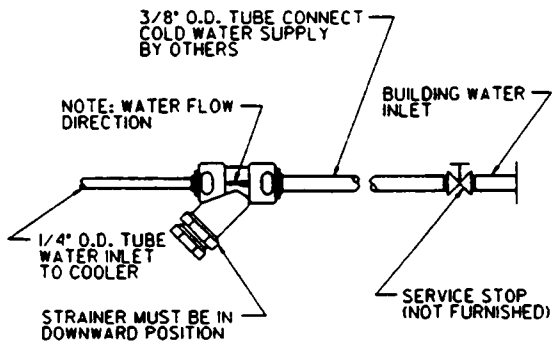


FIG. 8

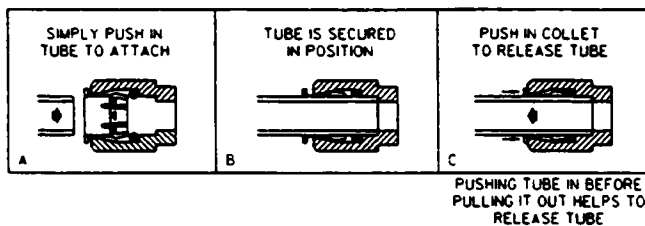
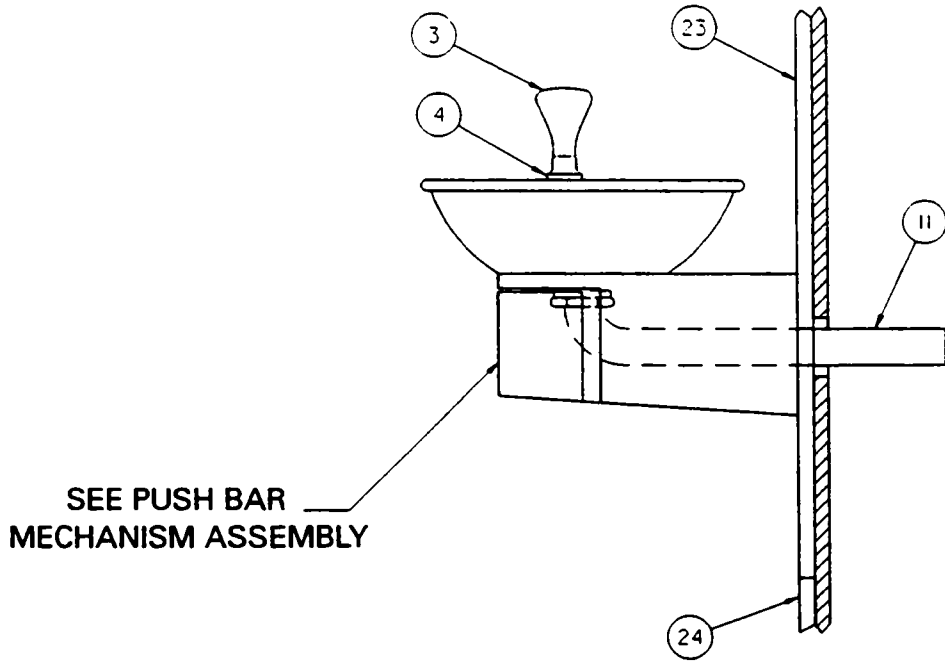
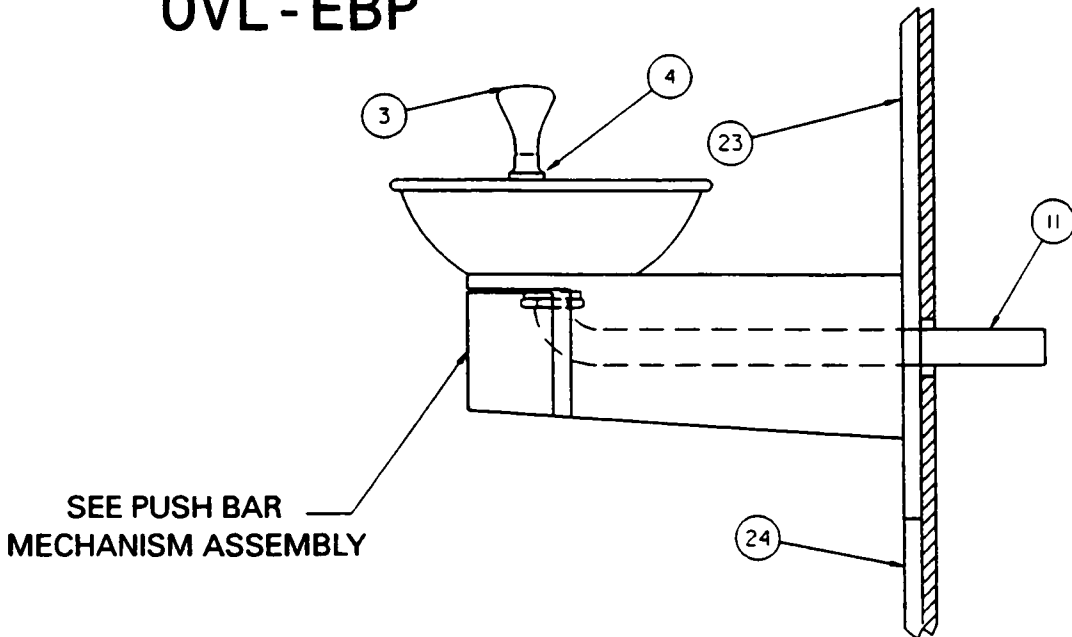


FIG. 9

OVL - SBP



OVL - EBP



ITEMIZED PARTS LIST

ITEM NO.	PART NO.	DESCRIPTION
1	22638C	Bottom Cover (OVL-SBP)
	22639C	Bottom Cover (OVL-EBP)
2	10-15700-31-820	Push Arm Actuator
	41-15700-31-450	Push Arm Actuator - Golden Bronzestone
3	51546C	Bubbler
	51545C	Bubbler - Golden Bronzestone
4	10-03227-40-560	Bubbler Gasket
5	16-02705-08-640	Strainer Plate
	41-02705-08-450	Strainer Plate - Golden Bronzestone
6	10-15705-40-560	Drain Gasket
7	51575C	Packing Ring
8	11-03462-08-550	Drain Nut
9	10-16374-51-550	Friction Ring
10	16-16373-08-640	Drain Plug
	41-16373-08-450	Drain Plug/Strainer - Golden Bronzestone
11	45683C	Waste Elbow OVL-EBP
	45682C	Waste Elbow OVL-SBP
12	10-00233-40-560	Waste Tube Gasket
13	16-15708-08-550	Slip Nut
14	61314C	Regulator
15	40289C	Regulator Housing
16	22640C	Basin
	22641C	Basin - Golden Bronzestone
17	22642C	Basin Liner
	22643C	Basin Liner - Golden Bronzestone
18	70861C	Screw #10-24 X 2"
19	10-15641-31-550	Top Plate
20	10-15701-31-550	Bottom Plate
21	11-15702-08-550	Dowel Pin
22	22651C	Carrier Arm - OVL-EBP
	22653C	Carrier Arm - Golden Bronzestone OVL-EBP
	22652C	Carrier Arm - OVL-SBP
	22654C	Carrier Arm - Golden Bronzestone OVL-SBP
	22791C	Back Panel - OVL-EBP
23	22792C	Back Panel - Golden Bronzestone OVL-EBP
	22793C	Back Panel - OVL-SBP
	22794C	Back Panel - Golden Bronzestone Ovl-SBP
	26960C	Back Panel - OVL-SEBP
	26961C	Back Panel - Golden Bronzestone OVL-SEBP
24	70788C	Y-Strainer

CAUTION

Cleaning of Golden Bronzitone Models requires special care. Outer surfaces must be cleaned with a mild detergent or mixture of vinegar and water only, rinsed and wiped dry. Abrasive and acidic cleaners may eventually damage the Golden Bronzitone finish.

Halsey Taylor®

P. O. BOX 9001
OAK BROOK, IL 60521
(708) 574-3500

FOR PARTS, CONTACT YOUR LOCAL DISTRIBUTOR OR CALL 1-800-323-0620

PRINTED IN U. S. A.