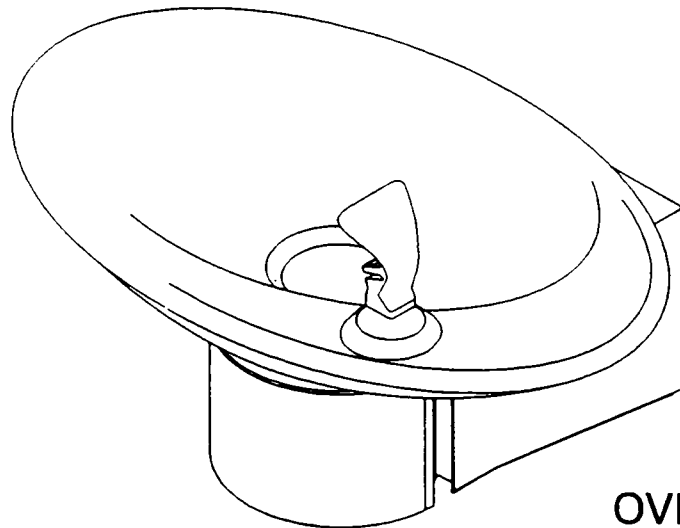


Halsey Taylor Owners Manual

OVL-E & OVL-S FOUNTAINS



OVL-S

Installer

To assure you install this model easily and correctly,
**PLEASE READ THESE SIMPLE INSTRUCTIONS BEFORE STARTING THE
INSTALLATION. CHECK YOUR INSTALLATION FOR COMPLIANCE WITH
PLUMBING, ELECTRICAL AND OTHER APPLICABLE CODES.** After install-
ation, these instructions should be kept for future reference.

IMPORTANT

ALL SERVICE TO BE PERFORMED BY AN AUTHORIZED SERVICE PERSON

Installation Instructions	Page 2
Trouble Shooting & Maintenance	Page 2
Parts List and Parts View	Page 3
Rough-in Specifications	Page 4
For Care of Golden Bronzestone Models	
See Trouble Shooting & Maintenance	Page 2

INSTALLATION

1. This fountain is to be mounted on a smooth, flat, finished wall surface, with adequate support structure.
2. Establish rim height fountain is to be mounted.
3. Refer to rough-in for plumbing.
4. Locate and install trap. (Trap not furnished.)
5. Install shut-off valve on building water supply. (Shut-off valve not furnished.)
6. Remove access panel from bottom of fountain.
7. Locate and install fountain using 3/8" (10 mm) (minimum) lag screws or bolts (not furnished).

CAUTION: This fountain is rated for inlet water pressure of 20-90 PSI. Should the inlet water supply exceed 90 PSI a pressure reducing regulator should be used.

8. Connect fountain to building supply line with a shut-off valve and install a 3/8" (10 mm) water line between the valve and fountain.

Remove burr from outside of water line. Insert water line to positive stop approximately 3/4" (19 mm) on inlet side of y-strainer.

9. To remove waste elbow, remove (4) screws (item 18) and drop bottom plate (item 20) and push bar (item 2) down. Waste elbow slip nut (item 13) is now accessible. Connect fountain drain.
10. Turn "ON" water supply and check all connections for leaks.
11. Adjust projector stream height.
12. If needed, adjust push arm/regulator clearance by turning phillips head screw on regulator bracket ass'y. (item 1). Turning screw CCW should correct water coming out of projector continuously.
13. Reinstall access panel using screws provided.

TROUBLE SHOOTING & MAINTENANCE

PROJECTOR: If mineral deposits build up in orifices, they can be removed by using a round file or small diameter wire.

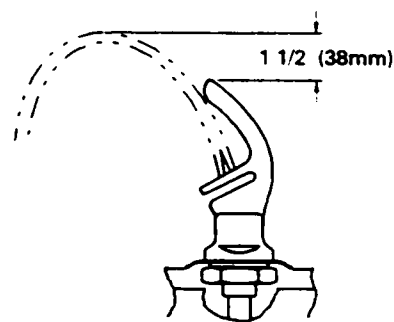
CAUTION: Care must be taken not to damage orifices.

STREAM REGULATOR: Adjust stream height by turning the pressure regulator screw on item 15 located under the fountain access panel.

Actuation of Quick Connect Water Fittings:

Coller is provided with lead-free connectors which utilize an o-ring water seal. To remove tubing from the fitting, relieve water pressure, push in on gray collar while pulling out on the tubing. To insert tubing, push tube straight into fitting until it reaches a positive stop, approximately 3/4" (19 mm). See Fig. 1

CAUTION: Cleaning of Golden Bronztone Models requires special care. Outer surfaces must be cleaned with a mild detergent or vinegar and water ONLY. Rinsed and wiped dry. Abrasive and acidic cleaners may eventually damage the Golden Bronztone Finish,



CORRECT STREAM HEIGHT

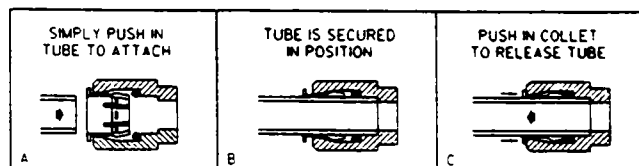
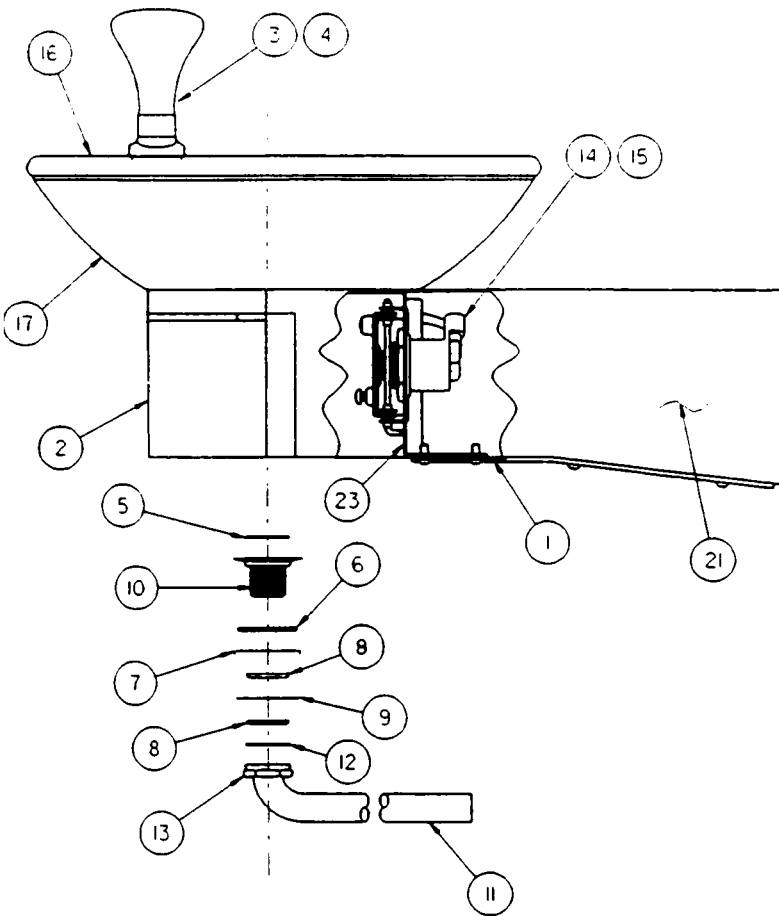


FIG. 1

PUSHING TUBE IN BEFORE PULLING IT OUT HELPS TO RELEASE TUBE

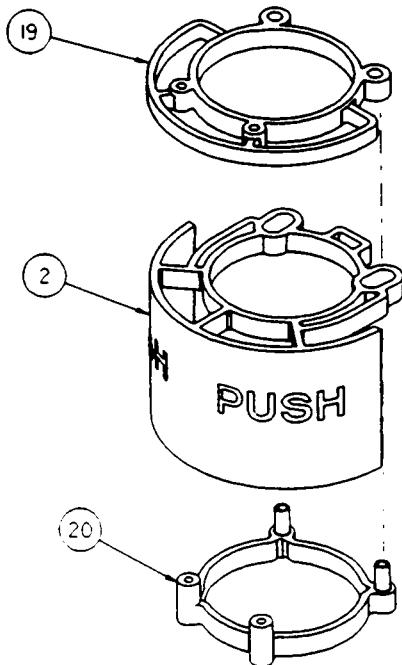
OVL FOUNTAIN

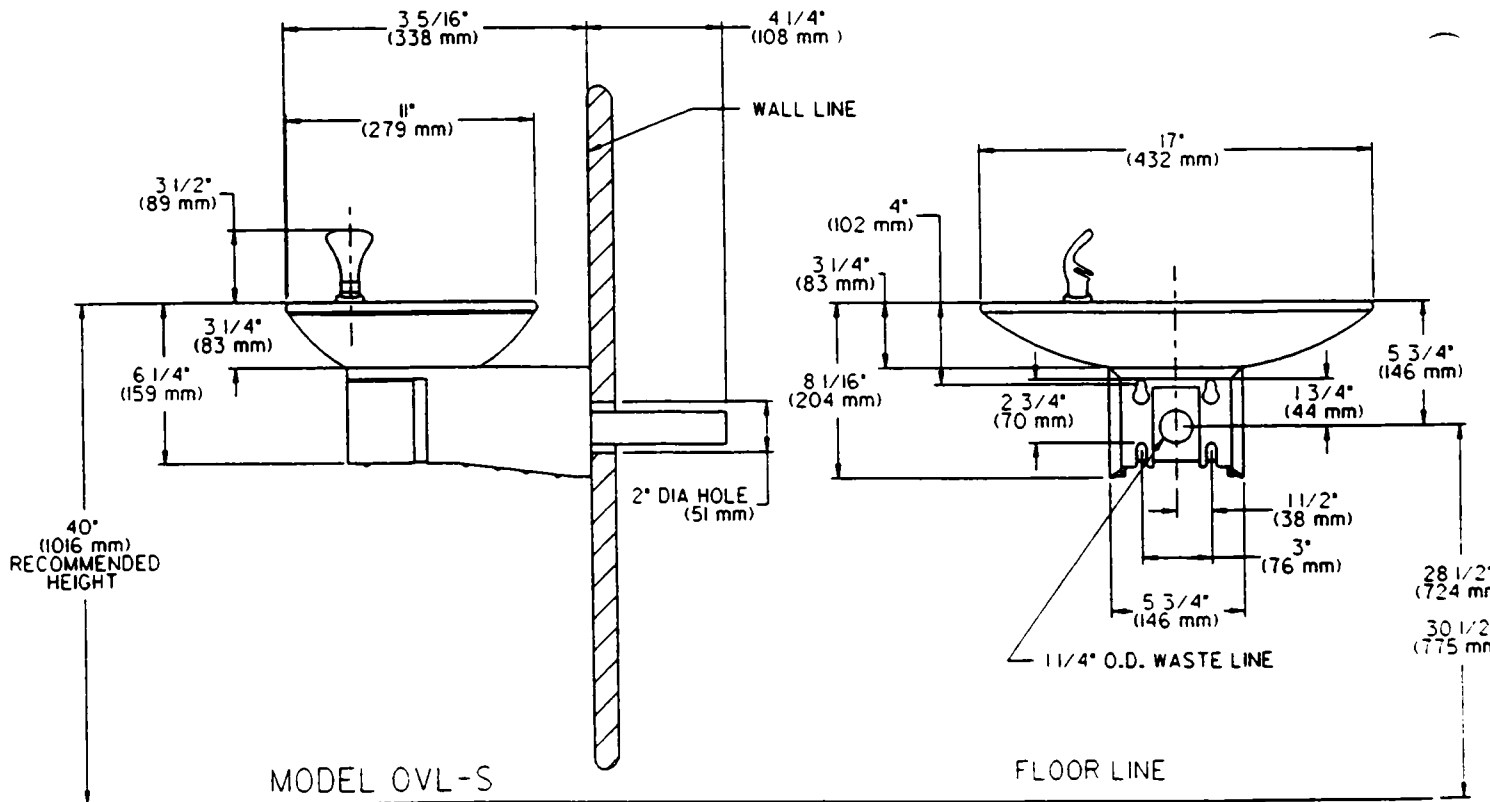
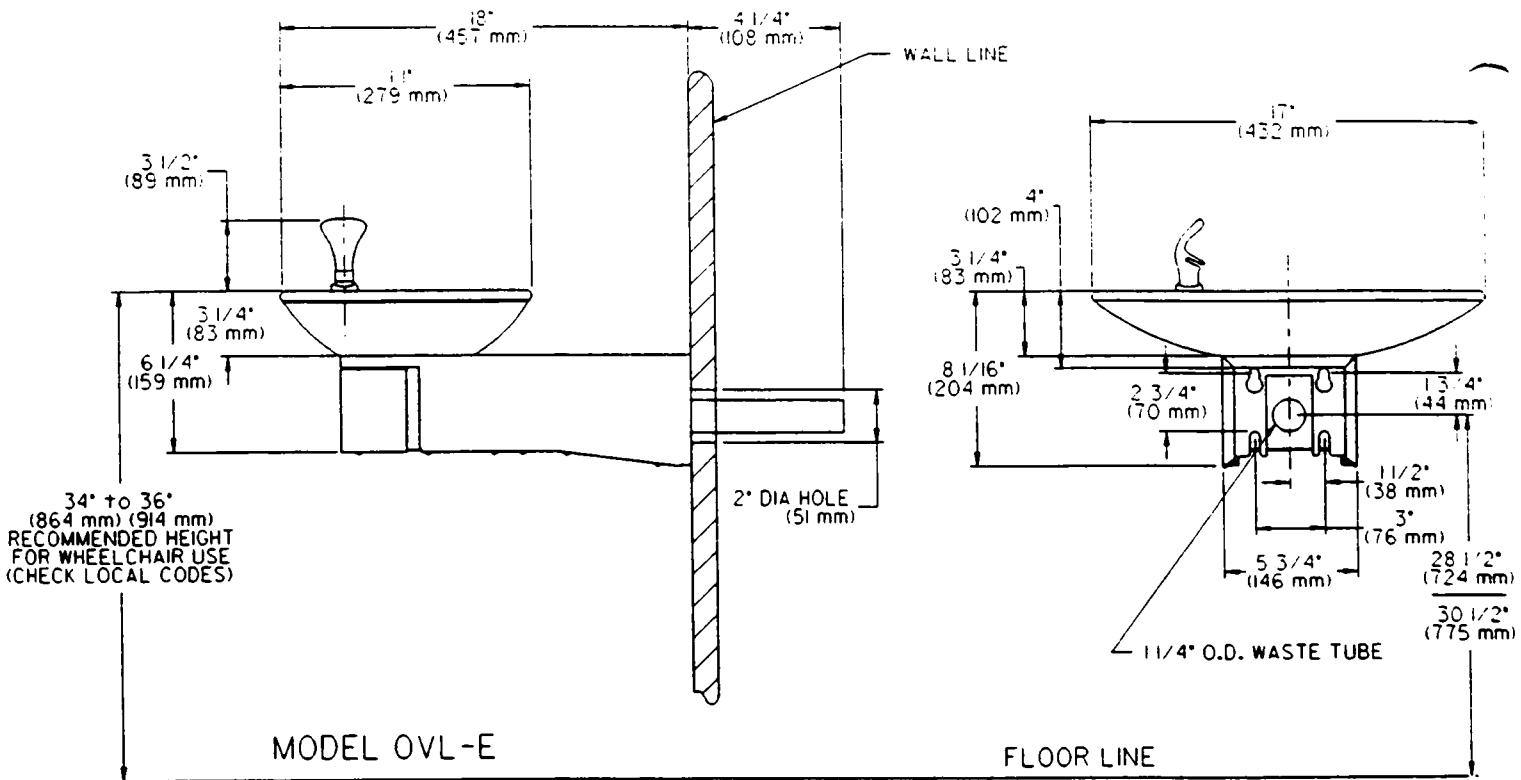


ITEMIZED PARTS LIST

ITEM NO.	PART NO.	DESCRIPTION
1	26990C	BOTTOM COVER (OVL-S)
	26988C	BOTTOM COVER (OVL-E)
2	55836C	PUSH ARM ACTUATOR
	55837C	PUSH ARM ACTUATOR-GB
3	51546C	BUBBLER
	51545C	BUBBLER-GB
4	10-03227-40-560	BUBBLER GASKET
5	16-02705-08-640	STRAINER PLATE
	41-02705-08-450	STRAINER PLATE-GB
6	10-15705-40-560	DRAIN GASKET
7	51575C	PACKING RING
8	11-03462-08-550	DRAIN NUT
9	10-16374-51-550	FRICTION RING
10	16-16373-08-640	DRAIN PLUG
	41-16373-08-450	DRAIN PLUG/STRAINER-GB
11	45683C	WASTE ELBOW OVL-E
	45682C	WASTE ELBOW OVL-S
12	10-00233-40-560	WASTE TUBE GASKET
13	16-15708-08-550	SLIP NUT
14	61314C	REGULATOR
15	40289C	REGULATOR HOUSING
16	27006C	BASIN
	27007C	BASIN-GB
17	27000C	BASIN LINER
	27001C	BASIN LINER-GB
18	70861C	SCREW #10-24 X 2
	55840C	TOP PLATE
20	55839C	BOTTOM PLATE
21	27011C	ARM OVL-E W/WELDNUTS
	27013C	CARRIER ARM-GB (OVL-E)
	27012C	ARM OVL-S W/WELDNUTS
	27014C	CARRIER ARM -GB (OVL-S)
22	70788C	Y-STRAINER
23	26992C	REGULATOR MOUNTING BRACKET

PUSH BAR MECHANISM





Halsey Taylor®

P. O. BOX 9001
 OAK BROOK, IL 60521
 (708) 574-3500

PRINTED IN U.S.A.

FOR PARTS, CONTACT YOUR LOCAL DISTRIBUTOR OR CALL 1-800-323-0620