

# Halsey Taylor®



## INSTALLATION INSTRUCTIONS & PARTS LIST FOR MODELS



### FOUNTAIN(S) WITH BACK PANEL

OVL-EBP .....	2
OVL-SBP .....	3
OVL-ESBP .....	4
PARTS LIST — OVL-EBP, SBP and ESBP .....	6
CARE OF GOLDEN BRONZETONE MODELS .....	Last Page

#### INSTALLER

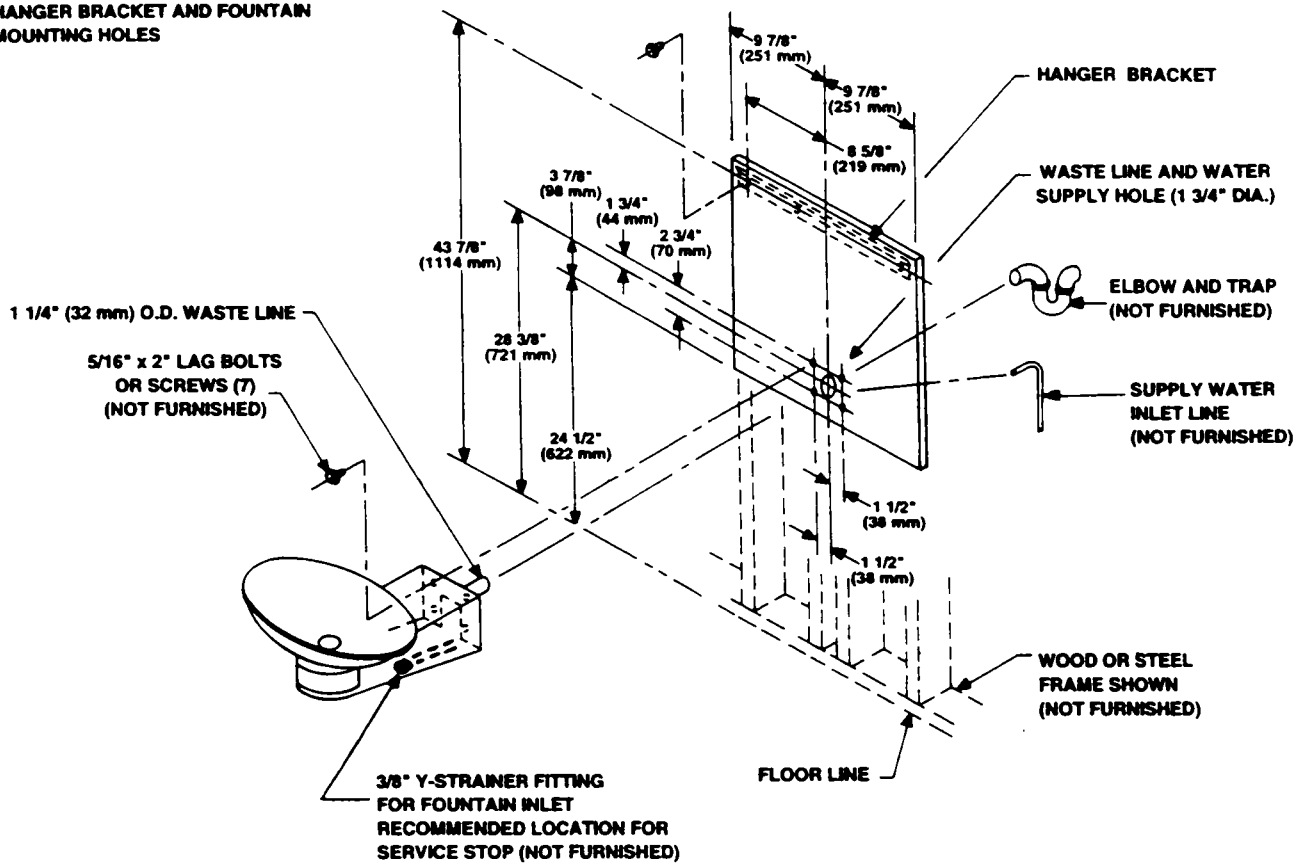
To assure that you install this model easily and correctly, PLEASE READ THESE SIMPLE INSTRUCTIONS BEFORE STARTING THE INSTALLATION. CHECK YOUR INSTALLATION FOR COMPLIANCE WITH PLUMBING AND OTHER APPLICABLE CODES. After installation, leave these instructions inside the cooler for future reference.

**NOTE:** All service to be performed by authorized service person.



# EBP BARRIER-FREE FOUNTAIN WITH BACK PANEL

**DIMENSIONS SHOWN LOCATE  
WASTE AND INLET LINES  
(1 3/4" (44 mm) DIA. HOLE)  
HANGER BRACKET AND FOUNTAIN  
MOUNTING HOLES**



**FIGURE 1**

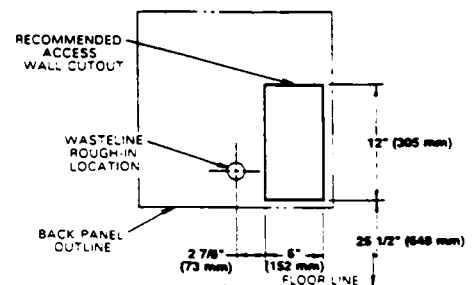
## OPERATING PRESSURES:

Supply water -90 psi maximum

\* 24 1/2" (622 mm) required to obtain a projector orifice height of 35 3/4" (908 mm) for wheelchair users. When installing this unit, LOCAL, STATE or FEDERAL CODES should be adhered to and dimensions adjusted accordingly.

## INSTALLATION INSTRUCTIONS

1. Frame up for fountain. Dimensions are shown for installation, see Figure 1 or 2. (Framing is shown for reference.)
2. Attach hanger bracket as shown in Figure 1. Waste line to extend through panel 2" (51 mm) min. from the wall. Run inlet line through panel to required length for fountain. A service supply stop (not provided) should be installed. Inlet tubing should be insulated.
3. Hang fountain panel to hanger bracket. Remove access cover plate on fountain. Cut waste tube to required length. Install the fountain to the panel and wall with (4) screws. (not provided).
4. To remove waste elbow, remove (4) screws (Item 19) and drop bottom plate (Item 21) and push bar (Item 3) down. Waste elbow slip nut (Item 14) is now accessible.
5. Connect fountain to building supply line with a shut-off valve and install a 3/8" (9 mm) water line between the valve and fountain. Remove burr from outside of water line. Loosen nut on inlet side of y-strainer and insert water line to positive stop approximately 3/4" (19 mm). Finger tighten nut to lock tubing in place.
6. Turn on water supply and check for leaks. Correct stream height is obtained by turning adjusting screw on (Item 15) until stream is approximately 1 1/2" (38 mm) above the projector. Replace fountain access cover plate. If needed, adjust push arm/regulator clearance by turning phillips head screw on regulator bracket ass'y. (Item 1). Turning screw CCW should correct water coming out of projector continuously.





# SBP FACE MOUNTED FOUNTAIN WITH BACK PANEL

DIMENSIONS SHOWN LOCATE  
WASTE AND INLET LINES  
(1 3/4" (44 mm) DIA. HOLES)  
HANGER BRACKET AND FOUNTAIN  
MOUNTING HOLES

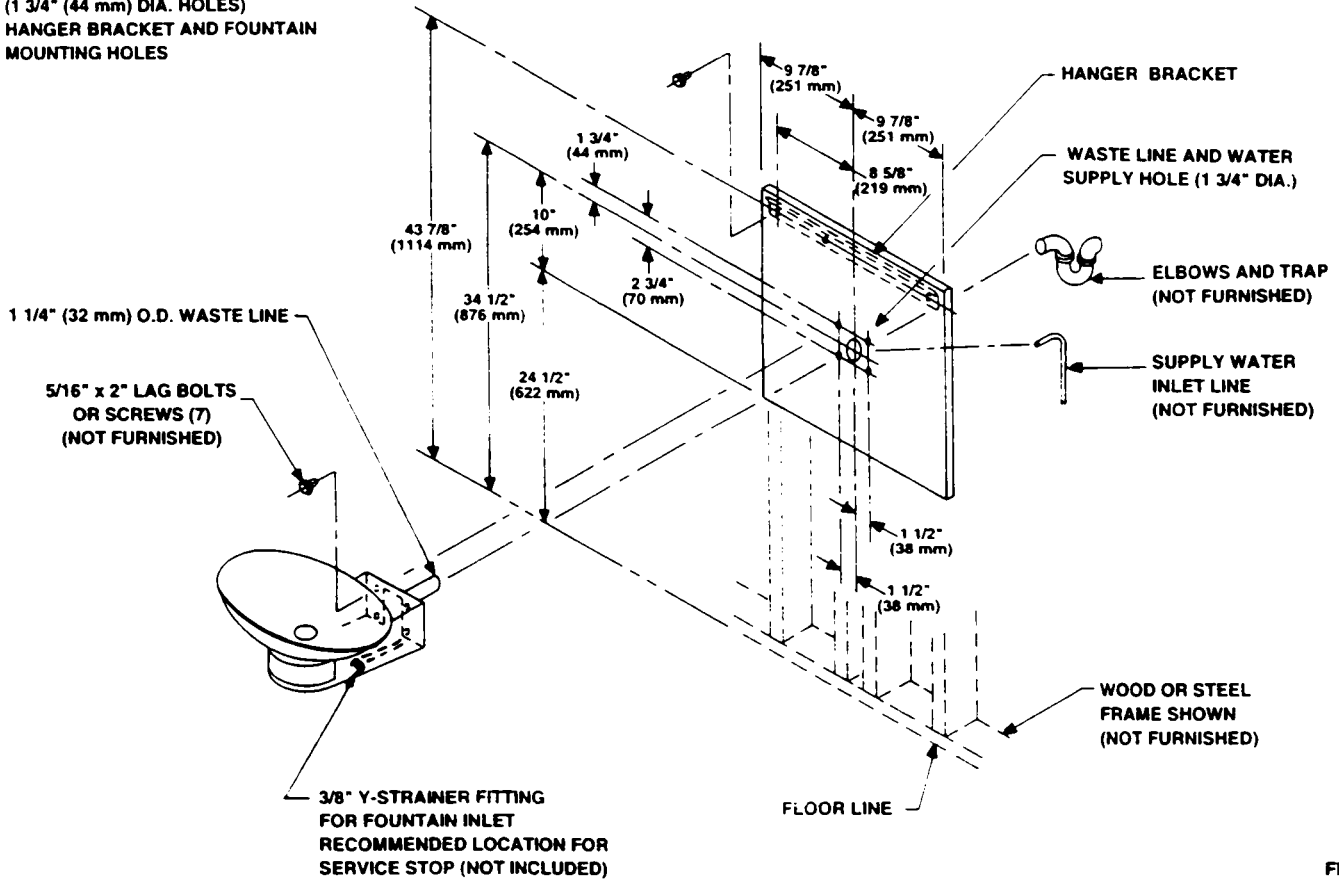


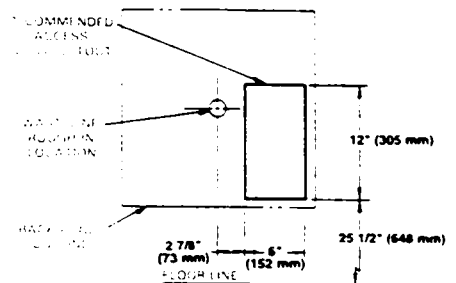
FIGURE 2

**OPERATING PRESSURES:**  
Supply water -90 psi maximum

\* 24 1/2" (622 mm) required to obtain a projector orifice height of 42". When installing this unit, LOCAL, STATE or FEDERAL CODES should be adhered to and dimensions adjusted accordingly.

## INSTALLATION INSTRUCTIONS

1. Frame up for fountain. Dimensions are shown for installation, see Figure 1 or 2. (Framing is shown for reference.)
2. Attach hanger bracket as shown in Figure 2. Waste line to extend through panel 2" (51 mm) min. from the wall. Run inlet line through panel to required length for fountain. A service supply stop (not provided) should be installed. Inlet tubing should be insulated.
3. Hang fountain panel to hanger bracket. Remove access cover plate on fountain. Cut waste tube to required length. Install the fountain to the panel and wall with (4) screws. (not provided)
4. To remove waste elbow, remove (4) screws (Item 19) and drop bottom plate (Item 21) and push bar (Item 3) down. Waste elbow slip nut (Item 14) is now accessible.
5. Connect fountain to building supply line with a shut-off valve and install a 3/8" (9 mm) water line between the valve and fountain. Remove burr from outside of water line. Loosen nut on inlet side of y-strainer and insert water line to positive stop approximately 3/4" (19 mm). Finger tighten nut to lock tubing in place.
6. Turn on water supply and check for leaks. Correct stream height is obtained by turning adjusting screw on (Item 15) until stream is approximately 1 1/2" (38 mm) above the projector. Replace fountain access cover plate. If needed, adjust push arm/regulator clearance by turning phillips head screw on regulator bracket ass'y. (Item 1). Turning screw CCW should correct water coming out of projector continuously.





# ESBP BARRIER-FREE BILEVEL FOUNTAIN

DIMENSIONS SHOWN LOCATE WASTE AND INLET LINES (1 3/4" (44 mm) DIA. HOLE) HANGER BRACKET AND FOUNTAIN MOUNTING HOLES

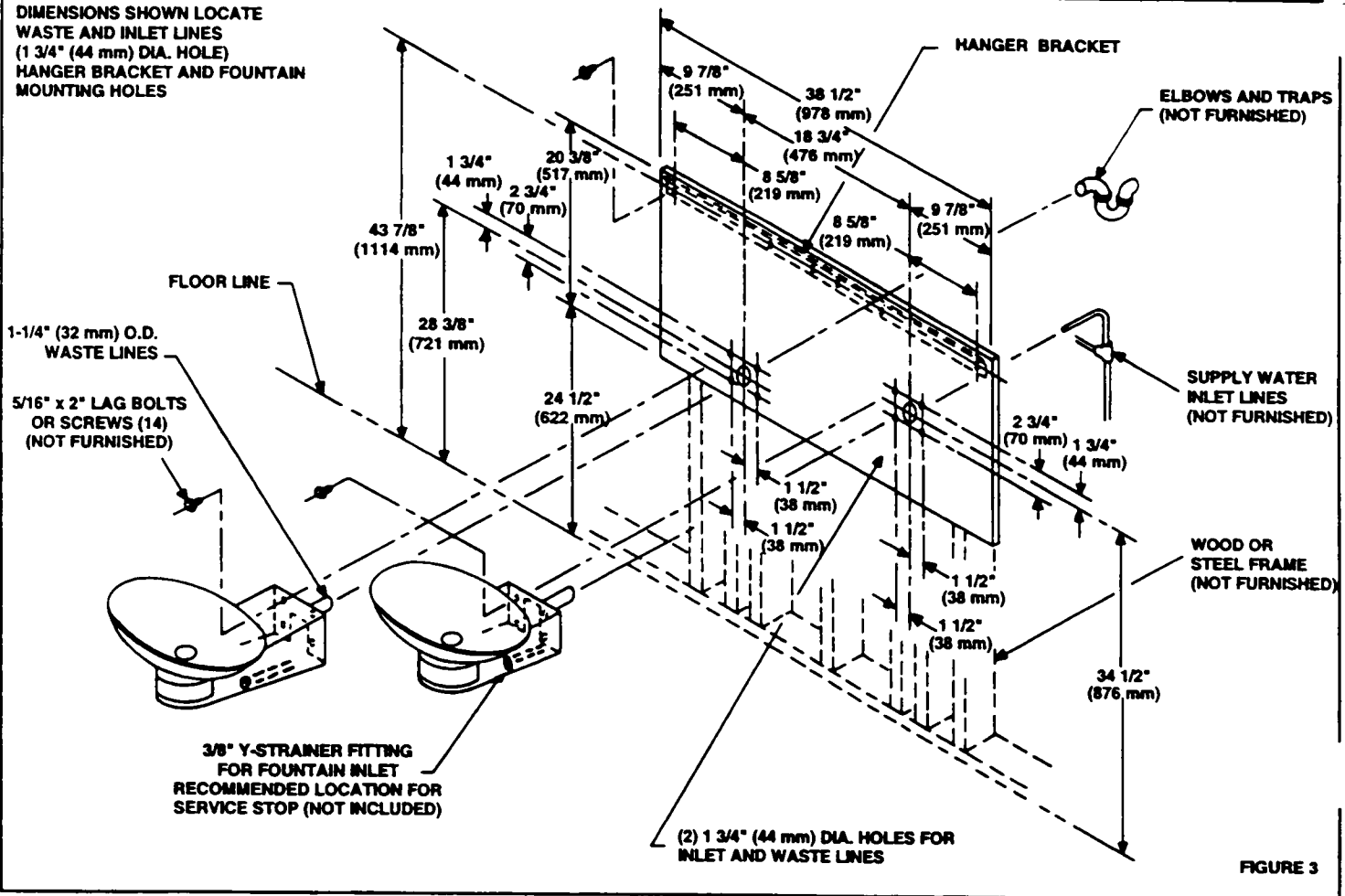


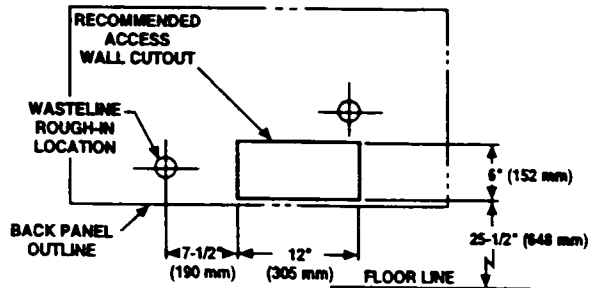
FIGURE 3

**OPERATING PRESSURES:**  
Supply water -90 psi maximum

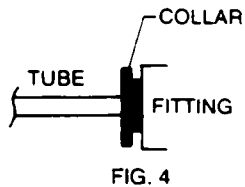
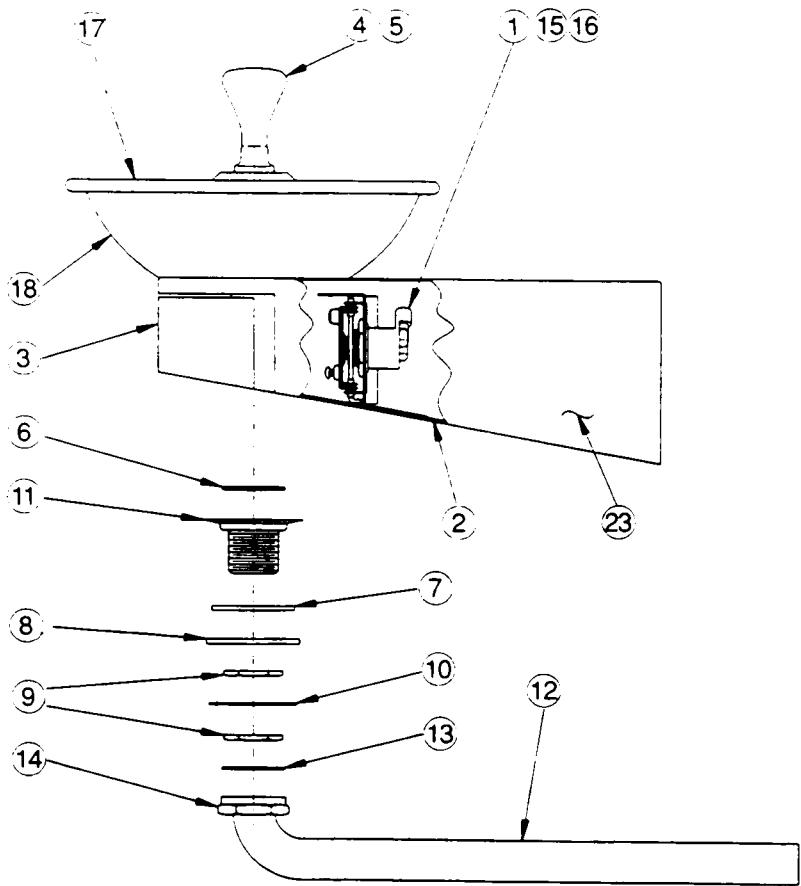
\* 24 1/2" (622 mm) required to obtain a projector orifice height of 35 3/4" (908 mm) for wheelchair users. When installing this unit, LOCAL, STATE or FEDERAL CODES should be adhered to and dimensions adjusted accordingly.

## INSTALLATION INSTRUCTIONS

1. Frame up for fountains. Dimensions are shown for installation, see Figure 3. (Frame is shown for reference.)
2. Attach hanger bracket as shown in Figure 3. Waste line to extend 2" (51 mm) min. from the wall. Run inlet lines through panel to required length for fountains. A service supply stop (not provided) should be installed. Inlet tubing should be insulated.
3. Hang fountain panel to hanger bracket. Remove access cover plates on fountains. Cut waste tube to required length. (One or two traps may be used.) Install the fountains to the panel and wall frame with (8) screws. (not provided)
4. To remove waste elbow, remove (4) screws (Item 19) and drop bottom plate (Item 21) and push bar (Item 3) down. Waste elbow slip nut (Item 14) is now accessible.
5. Connect fountain to building supply line with a shut-off valve and install a 3/8" (9 mm) water line between the valve and fountain. Remove burr from outside of water line. Loosen nut on inlet side of y-strainer and insert water line to positive stop approximately 3/4" (19 mm). Finger tighten nut to lock tubing in place.
6. Turn on water supply and check for leaks. Adjust fountain stream by adjusting regulator screw on (Item 15) until a stream height of 1 1/2" (38 mm) above projector is obtained. Replace access cover plate. If needed, adjust push arm/regulator clearance by turning phillips head screw on regulator bracket ass'y. (Item 1). Turning screw CCW should correct water coming out of projector continuously.

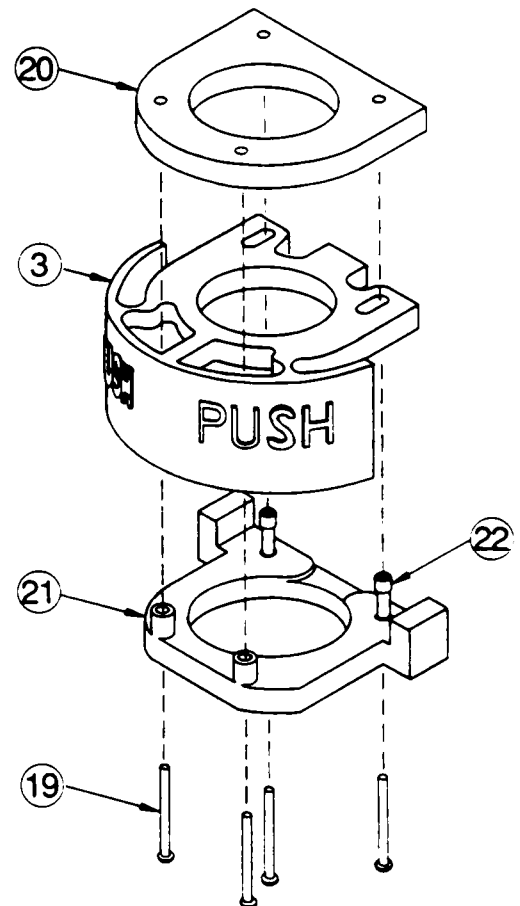


# OVL FOUNTAIN



**Actuation of Quick Connect Water Fittings:** Cooler is provided with lead-free connectors which utilize an o-ring water seal. To remove tubing from the fitting, relieve water pressure, push in on the gray collar while pulling out on the tubing. To insert tubing, push tube straight into fitting until it reaches a positive stop, approximately 3/4 in (19 mm). See FIG. 4.

# PUSH BAR MECHANISM



## PARTS LIST -



## EBP, SBP &amp; ESBP

ITEM NO.	PART NO.	DESCRIPTION
1	22647-C	Regulator/Brkt. Ass'y.
2	22638-C	Bottom Cover (OVL-SBP)
	22639-C	Bottom Cover (OVL-EBP)
3	10-15700-31-820	Push Arm Actuator
	41-15700-31-450	Push Arm Actuator—Golden Bronzestone
4	51493-C	Bubbler
	51494-C	Bubbler—Golden Bronzestone
5	10-03227-40-560	Bubbler Gasket
6	16-02705-08-640	Strainer Plate
	41-02705-08-450	Strainer Plate—Golden Bronzestone
7	10-15705-40-560	Drain Gasket
8	51575-C	Packing Ring
9	11-03462-08-550	Drain Nut
10	10-16374-51-550	Friction Ring
11	16-15704-08-640	Drain Plug
	41-26292-51-450	Drain Plug/Strainer—Golden Bronzestone
12	16-15709-08-550	Waste Elbow OVL-EBP
	16-15707-08-550	Waste Elbow OVL-SBP
13	10-00233-40-560	Waste Tube Gasket
14	16-15708-08-550	Slip Nut
* 15	61314-C	Regulator
* 16	40289-C	Regulator Housing
17	22640-C	Basin
	22641-C	Basin—Golden Bronzestone
18	22642-C	Basin Liner
	22643-C	Basin Liner—Golden Bronzestone
19	70861-C	Screw #10-24 X 2"
20	10-15641-31-550	Top Plate
21	10-15701-31-550	Bottom Plate
22	11 - 15702-08-550	Dowel Pin
23	22651-C	Carrier Arm OVL-EBP
	22653-C	Carrier Arm-Golden Bronzestone OVL-EBP
	22652-C	Carrier Arm OVL-SBP
	22654-C	Carrier Arm—Golden Bronzestone OVL-SBP
24	22791C	Back Panel OVL-EBP
	22792C	Back Panel—Golden Bronzestone OVL-EBP
	22793C	Back Panel OVL-SBP
	22794C	Back Panel—Golden Bronzestone OVL-SBP
	22789C	Back Panel OVL-ESBP
	22790C	Back Panel—Golden Bronzestone OVL-ESBP
25	70788C	Y-Strainer

\* Items included with item No. 1

# CAUTION

Cleaning of Golden Bronzitone Models requires special care. Outer surfaces must be cleaned with a mild detergent or vinegar and water ONLY. Rinsed and wiped dry. Abrasive and acidic cleaners may eventually damage the Golden Bronzitone Finish.

*Halsey Taylor*