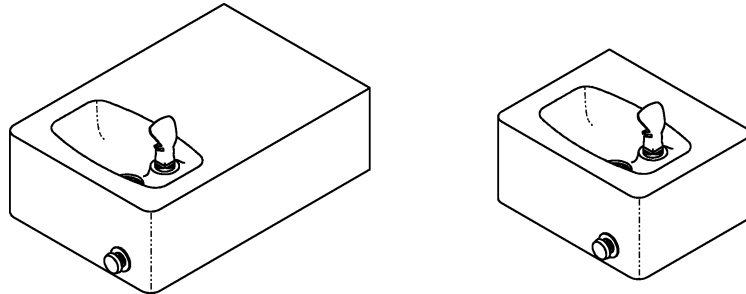


Halsey Taylor Owners Manual

Models: HT-E1 HT-S1
Freeze Resistant Fountains



Installer

To assure you install this model easily and correctly, PLEASE READ THESE SIMPLE INSTRUCTIONS BEFORE STARTING THE INSTALLATION. CHECK YOUR INSTALLATION FOR COMPLIANCE WITH PLUMBING, ELECTRICAL AND OTHER APPLICABLE CODES. After installation, leave these instructions inside the fountain for future reference.

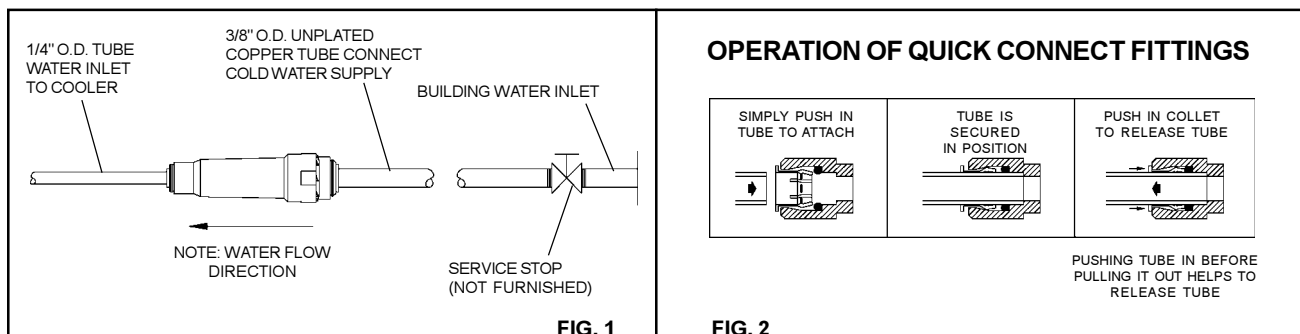
This Freeze Resistant Fountain is shipped in two separate cartons. The second carton contains the Freeze Resistant Package that is installed on an interior heated wall. Refer to the Freeze Resistant Package for the rough-in dimensions for installation.

IMPORTANT

ALL SERVICE TO BE PERFORMED BY AN AUTHORIZED SERVICE PERSON

IMPORTANT! INSTALLER PLEASE NOTE.

THE GROUNDING OF ELECTRICAL EQUIPMENT SUCH AS TELEPHONE, COMPUTERS, ETC. TO WATER LINES IS A COMMON PROCEDURE. THIS GROUNDING MAY BE IN THE BUILDING OR MAY OCCUR AWAY FROM THE BUILDING. THIS GROUNDING CAN CAUSE ELECTRICAL FEEDBACK INTO A FOUNTAIN, CREATING AN ELECTROLYSIS WHICH CAUSES A METALLIC TASTE OR AN INCREASE IN THE METAL CONTENT OF THE WATER. THIS CONDITION IS AVOIDABLE BY USING THE PROPER MATERIALS AS INDICATED. ANY DRAIN FITTINGS PROVIDED BY THE INSTALLER SHOULD BE MADE OF PLASTIC TO ELECTRICALLY ISOLATE THE FOUNTAIN FROM THE BUILDING PLUMBING SYSTEM.



HT-E1 ROUGH-IN

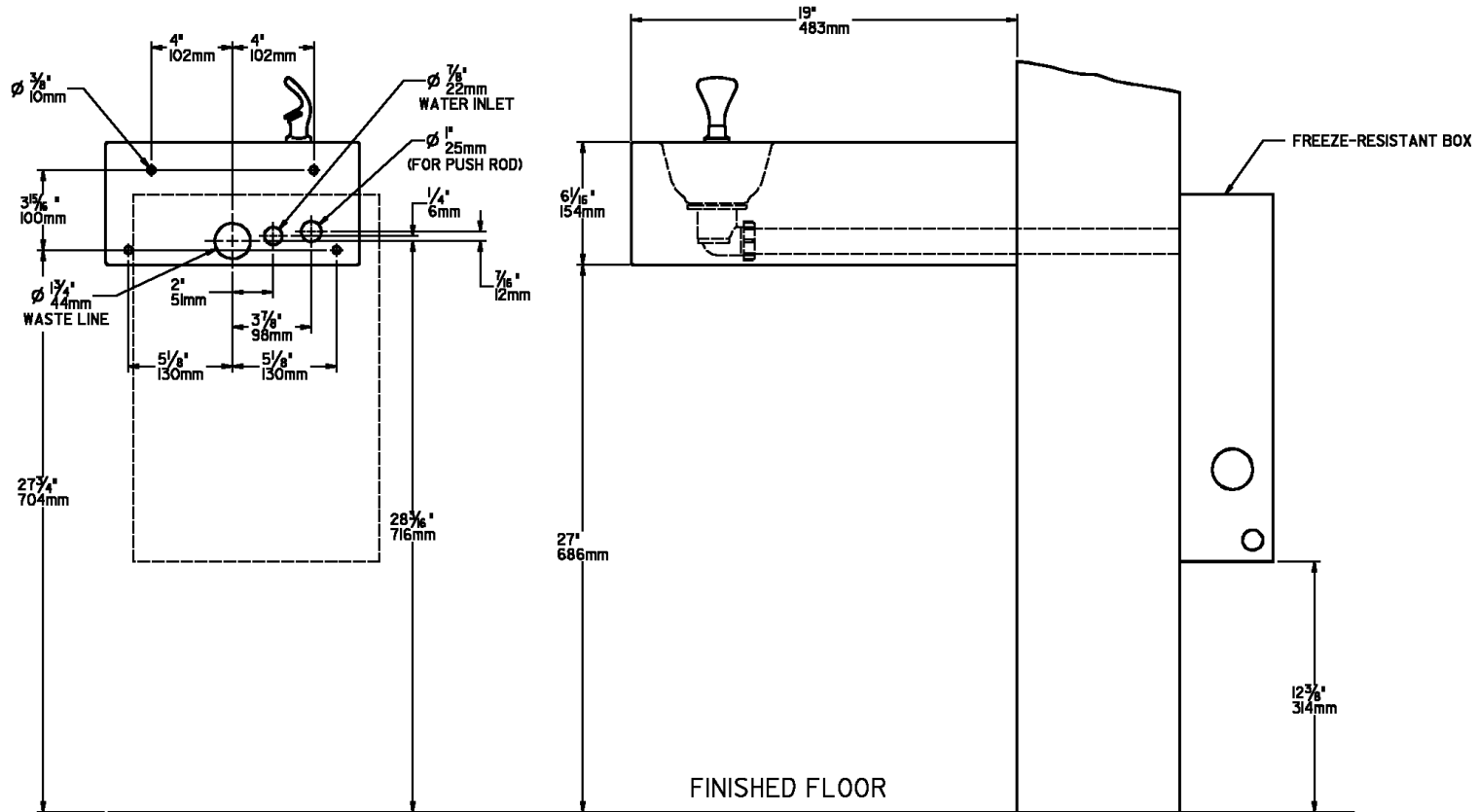


FIG. 3

1. Wall should already be framed for the fountain using dimensions shown in Fig. 3. Shown dimensions pertain to installation location. These dimensions are required for compliance with ANSI Standard A117.1. (and ADA) (Framing shown for reference only).
2. Remove bottom cover from fountain and save the screws. Assemble push rod to fountain. (Push rods provided with freeze-resistant box)
3. Install the fountain using bolts and washers (not provided). Tighten securely.
4. Attach drain tube to fountain and cut to required length using the freeze resistant box as a guide.
5. Install freeze-resistant box - see box instructions.
6. Install a service stop (not provided) and make water supply connection from the stop to the strainer(s) in the freeze-resistant box.
7. Connect fountain water line to freeze-resistant box - see box instructions. Replace bottom cover.

HT-S1 ROUGH-IN

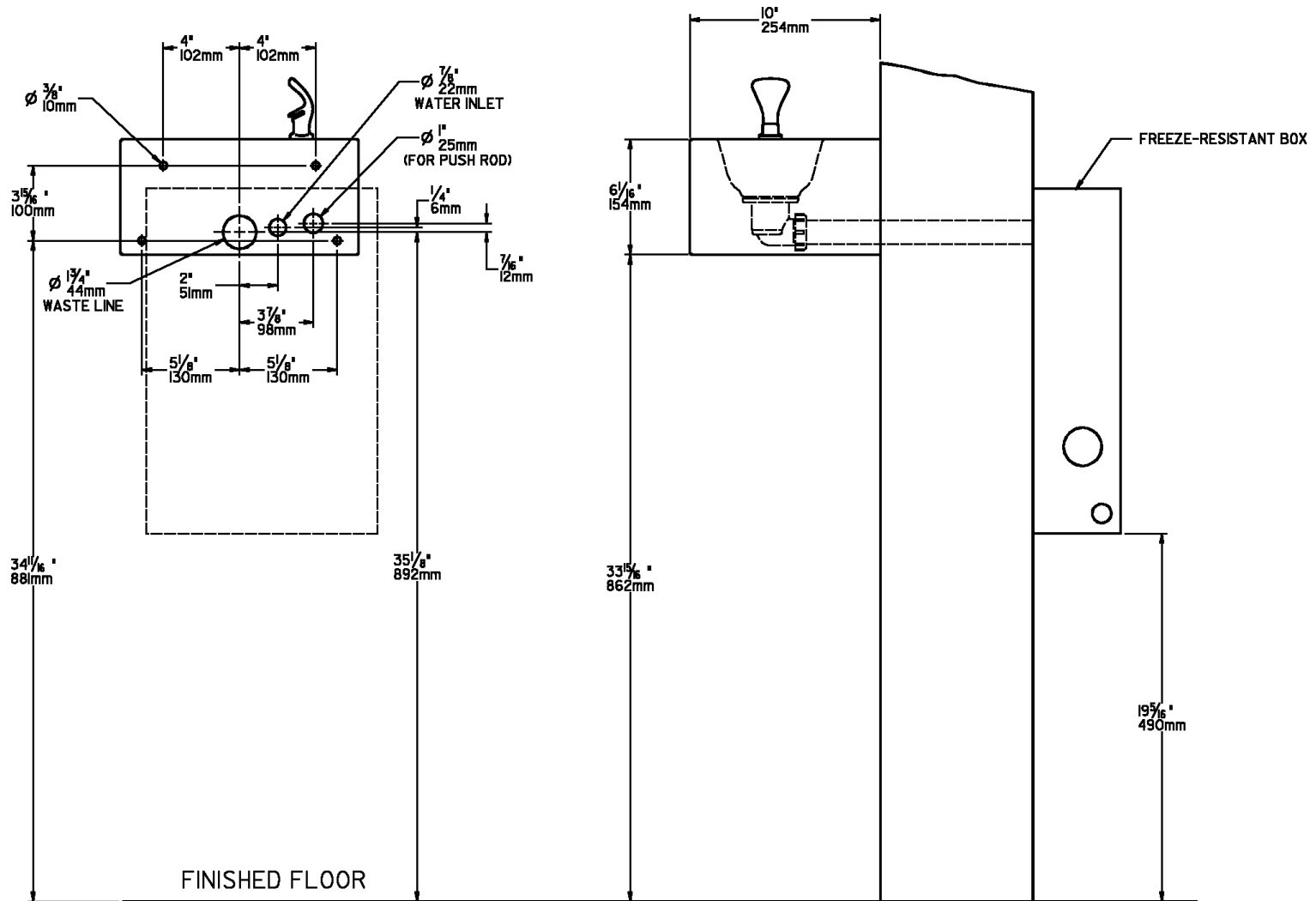


FIG. 4

HT-E1 & HT-S1

PARTS LIST		
ITEM NO.	PARTNO.	DESCRIPTION
1	51546C	Bubbler
2	100322740560	Gasket - Bubbler
3	66354C	Tube Assy - Bubbler (HT-E1)
	66355C	Tube Assy - Bubbler (HT-S1)
4	160270508640	Strainer Plate
5	161637308650	Drain Plug
6	100147140560	Gasket-Drain
7	66346C	Tube - Waste (HT-E1)
	66343C	Tube - Waste (HT-S1)
8	22913C	Basin (HT-E1)
	22915C	Basin (HT-S1)
9	23001C	Cover - Bottom (HT-E1)
	23002C	Cover - Bottom (HT-S1)
10	55864C	Bushing - Snap 1/2" I.D.
11	*55000458	Push Button Assy
12	*100813731870	Bushing - Snap
13	*70054C	Nut - Speed
14	55884C	Elbow - Drain
15	75588C	Nut - Slip Joint 1-1/4
16	75589C	Gasket
NS	55996C	Strainer (See Fig. 1)

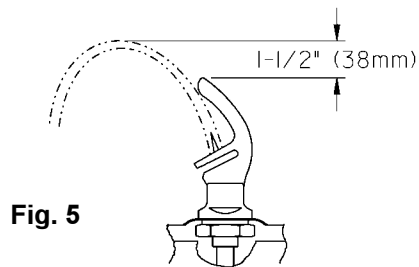
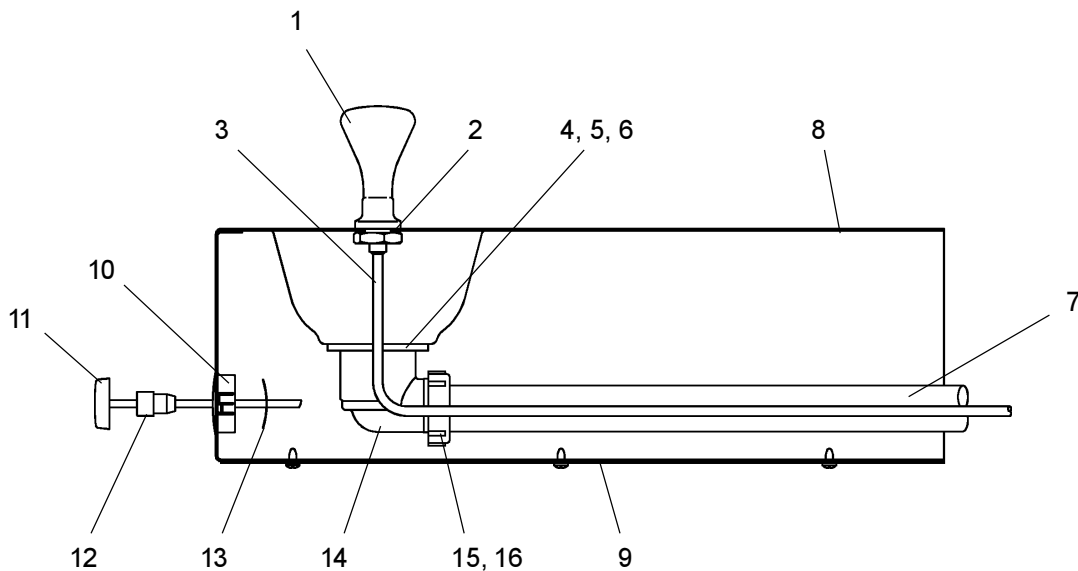


Fig. 5

STREAM HEIGHT ADJUSTMENT

Stream height is factory set at 35 PSI. If supply pressure varies greatly from this, adjust screw on regulator in freeze resistant box. Clockwise adjustment will raise stream and counter-clockwise adjustment will lower stream. For best adjustment, stream should hit basin approximately 6-1/2" from the bubbler.

* PARTS SUPPLIED WITH FREEZE-RESISTANT BOX



Halsey Taylor
 2222 CAMDEN COURT
 OAK BROOK, IL 60523
 630.574.3500

PRINTED IN U.S.A.

FOR PARTS, CONTACT YOUR LOCAL DISTRIBUTOR OR CALL 1.800.323.0620