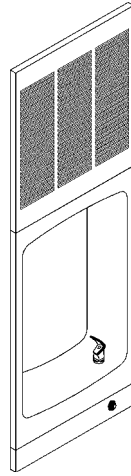


# Halsey Taylor Owners Manual

## Fully-Recessed Barrier-Free Water Cooler



### INSTALLER

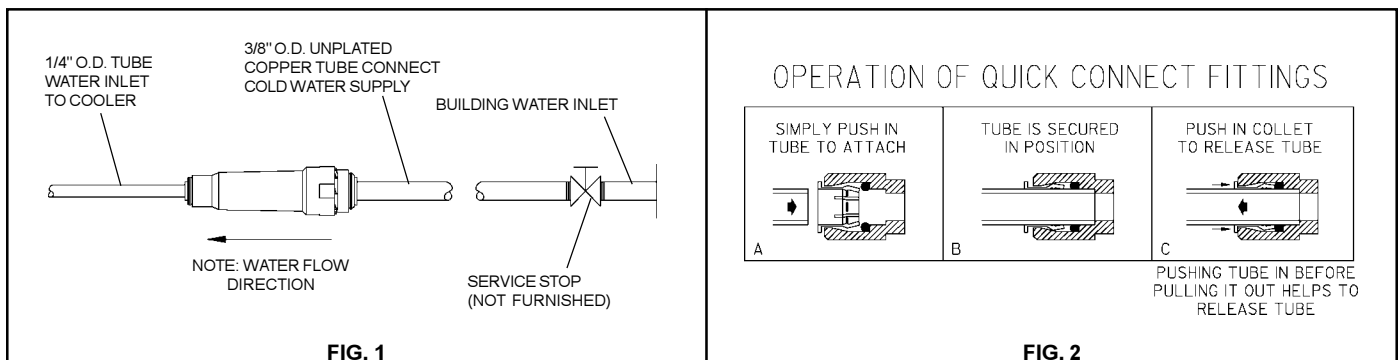
To assure you install these models easily and correctly,  
**PLEASE READ THESE SIMPLE INSTRUCTIONS BEFORE STARTING THE  
 INSTALLATION. CHECK YOUR INSTALLATION FOR COMPLIANCE WITH  
 PLUMBING, ELECTRICAL, AND OTHER APPLICABLE CODES.** After  
 installation, leave these instructions with the Water Cooler for future reference.

### IMPORTANT

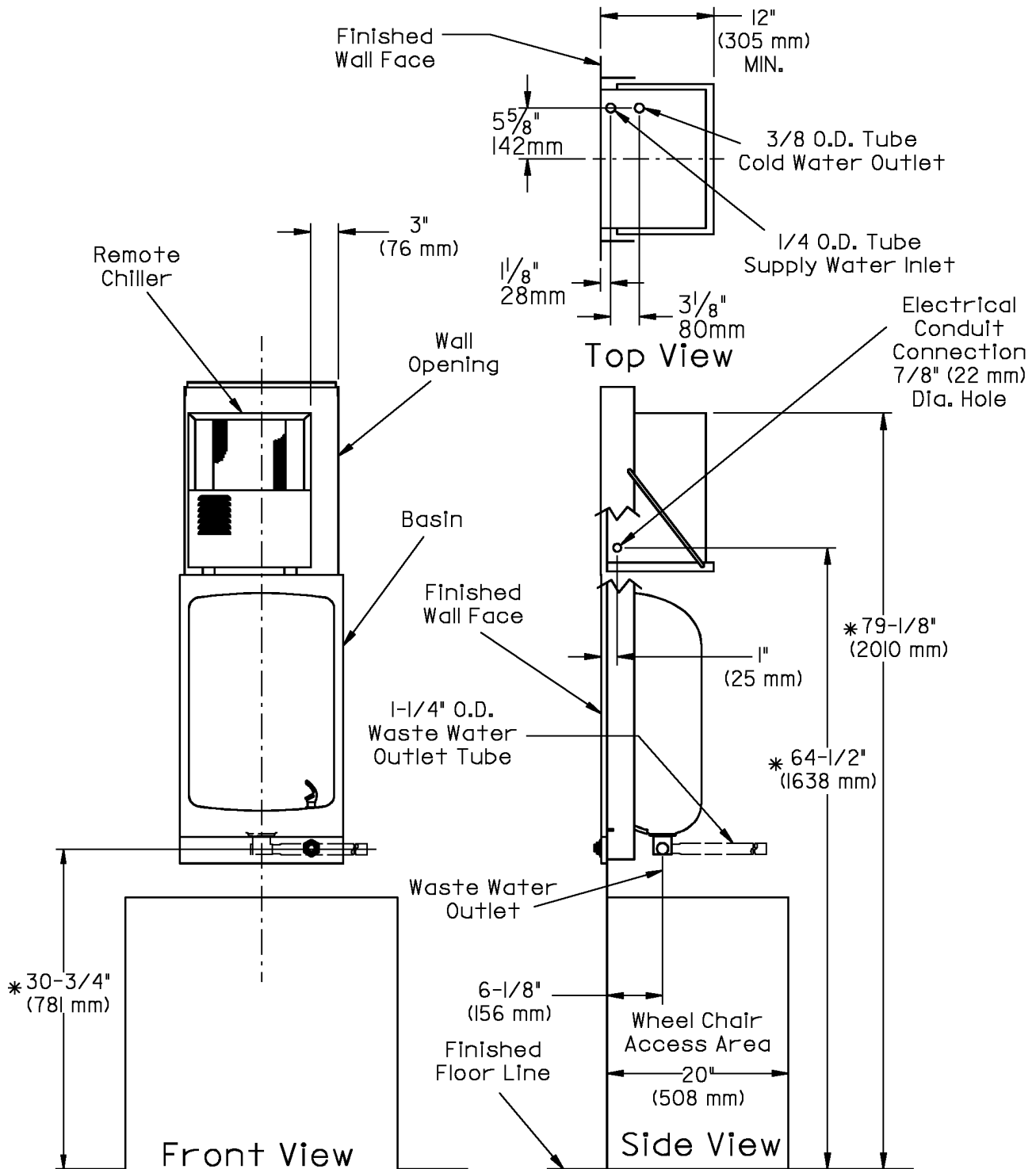
ALL SERVICE TO BE PERFORMED BY AN AUTHORIZED SERVICE PERSON

### IMPORTANT! INSTALLER PLEASE NOTE.

THE GROUNDING OF ELECTRICAL EQUIPMENT SUCH AS TELEPHONE, COMPUTERS, ETC. TO WATER LINES IS A COMMON PROCEDURE. THIS GROUNDING MAY BE IN THE BUILDING OR MAY OCCUR AWAY FROM THE BUILDING. THIS GROUNDING CAN CAUSE ELECTRICAL FEEDBACK INTO A FOUNTAIN, CREATING AN ELECTROLYSIS WHICH CAUSES A METALLIC TASTE OR AN INCREASE IN THE METAL CONTENT OF THE WATER. THIS CONDITION IS AVOIDABLE BY USING THE PROPER MATERIALS AS INDICATED. ANY DRAIN FITTINGS PROVIDED BY THE INSTALLER SHOULD BE MADE OF PLASTIC TO ELECTRICALLY ISOLATE THE FOUNTAIN FROM THE BUILDING PLUMBING SYSTEM.



ROUGH-IN DIMENSIONS



\* NOTE: If wall opening height has been adjusted to meet local codes (see wallframe instructions), height dimensions must be adjusted accordingly.

FIG. 3

## WALLFRAME INSTALLATION INSTRUCTIONS

BEFORE STARTING THE INSTALLATION, PLEASE CHECK YOUR INSTALLATION FOR COMPLIANCE WITH PLUMBING, ELECTRICAL AND OTHER APPLICABLE CODES

At 30" above the finished floor, cut a rectangular wall opening 17-1/8" wide by 52-1/4" high. This is required to obtain a rim height of 34-1/2" and 36" bubbler spout height, which is in compliance with ANSI Standard A117.1 (See Fig. 4)

Reinforce wall opening on all sides so that it will adequately support the water cooler. IT MUST SUPPORT UP TO 150 LBS. and provide a means of securing the frame assembly in place. NOTE: Building construction must allow for adequate air flow on both sides and top of remote chiller unit. 4" MINIMUM IS REQUIRED.

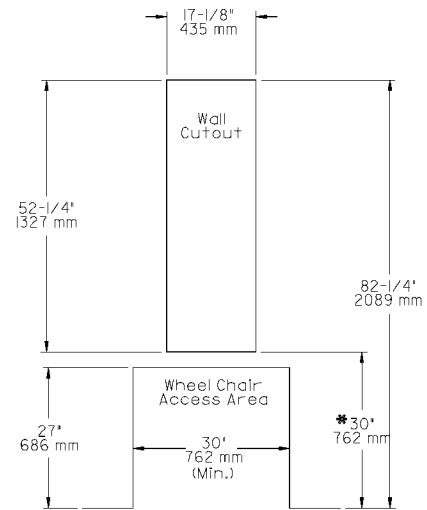
Install rough-in plumbing. See Fig. 3 for location of supply water inlet to chiller and for location of waste water outlet.

Install shelf support rods on wall frame assembly. These rods are located in the chiller shelf package. To install chiller shelf, place shelf on chiller support bracket and attach to support rods. Secure front edge of the shelf to support bracket using two (2) provided 5/16" x 3/4" long bolts and nuts. Tighten securely.

Install frame assembly in the wall opening with front edge flush with finished wall face. Secure frame through holes in top and sides to wall support members with 5/16" diameter bolts or lag screws (not supplied). Fourteen (14) bolts/screws are required. CAUTION: BE SURE THAT FRAME ASSEMBLY IS SQUARED IN ITS LOCATION AND DO NOT USE LESS THAN REQUIRED QUANTITY AND THE DIAMETER OF THE FASTENERS.

Install electrical conduit rough-in. Figure 3 shows location of electrical conduit.

### WALL ROUGH-IN



\* 30" (762 mm) to bottom of wall cutout required to obtain 34-1/2" (876 mm) rim height (Check local codes)

FIG. 4

## INSTALLATION INSTRUCTIONS

- Remove noise pad from paper and locate on bottom back of the basin between the drain and the bubbler holes.  
**CAUTION: TO INSURE PAD DOES NOT INTERFERE WITH THE HOLE AREAS, TRIM THE PAD SO THERE IS APPROX. 1/2" CLEARANCE AROUND THE HOLES.**
- Attach basin mounting brackets to basin studs located in the lower corners with the two (2) provided wing nuts. Tighten securely.
- Install basin. Place the upper edge of basin above the hangers in the wall frame. Slide the basin down until it is engaged before releasing it. Secure basin with the provided two (2) #8 x 3/4" tap screws and two (2) 11/64" ID washers.
- Install waste tube assembly. Align threaded portion of drain tube assembly with drain hole in basin. Place rubber gasket between drain assembly and basin. Screw in drain plug from above and tighten securely. Snap strainer plate into drain plug.
- Install a service stop (not provided) on supply water inlet line. Turn on supply water and flush thoroughly.
- Install remote chiller. Remove front panel of chiller. Slide chiller onto the shelf and position it to the left within the guides on the shelf.
- Make connection between remote chiller outlet tube and fountain strainer. Insert the water inlet line into inlet side of strainer by pushing it in until it reaches a positive stop, approximately 3/4" (19mm). Turn on water supply and check for leaks. **DO NOT SOLDER TUBES INSERTED INTO THE STRAINER AS DAMAGE TO THE O-RINGS MAY RESULT.**
- Check stream height from bubbler. Stream height is factory set at 45-50 PSI. If supply pressure varies greatly from this, remove items 20 & 21 and adjust the screw on regulator (item 17). Clockwise adjustment will raise stream height and counter-clockwise will lower stream height. For best adjustment stream height should be approximately 1-1/2" (38mm) above the bubbler guard. (See Fig.6)
- Make electrical connections to the chiller. See chiller instructions.
- Install chiller access panel. Insert two tabs on bottom of panel in slots on the frame (located just above basin). Swing top of panel in place and secure using (provided) mounting screws.
- Attach regulator holder (Item 16) to front panel (Item 5) with hex nut (Item 19). Install front panel. Hold panel and engage angle on top edge of panel with lower edge of basin. Swing bottom of panel into place against the wall and secure using panel mounting screws (provided).

ITEMIZED PARTS LIST

ITEM NO.	PART NO.	DESCRIPTION
1	170857042830	Basin - Stainless Steel
	27673C	Basin - Aztec Gold
2	732654351551	Mounting Frame
3	402658242830	Grille - Stainless Steel
	27677C	Grille - Aztec Gold
4	721408007304	Remote Chiller Assembly
5	23021C	Front Panel - Stainless Steel
	27675C	Front Panel - Aztec Gold
6	101567443730	Shelf Support Rod
7	402654143730	Chiller Shelf
8	100147140560	Gasket
9	160270508650	Strainer Plate - Chrome
	45400C	Strainer Plate - Aztec Gold
10	161637308640	Drain Plug - Chrome
	45398C	Drain Plug - Aztec Gold
11	51546C	Bubbler - Chrome
	45396C	Bubbler - Aztec Gold
12	100322740560	Gasket - Bubbler (2-Req'd)
13	10080C	Nipple - Bubbler
14	66346C	Tube - Waste
14a	75588C	Nut - Slip Joint 1-1/4
14b	55884C	Elbow - Drain
15	74050011	Noise Pad
16	50986C	Holder Regulator
17	61313C	Regulator
18	15005C	Retaining Nut
19	40169C	Hex Nut - Chrome
	45425C	Hex Nut - Aztec Gold
20	40089C	Cover Nut - Chrome
	45422C	Cover Nut - Aztec Gold
21	40048C	Button - Chrome
	45419C	Button - Aztec Gold
22	55996C	Strainer
23	70745C	Union - 3/8" x 1/4"
24	70870C	Union - 3/8"

TROUBLE SHOOTING AND MAINTENANCE

**CAUTION:** Cleaning of Aztec Gold Models requires special care. Outer surfaces must be cleaned with a mild detergent or mixture of vinegar and water only, rinsed and wiped dry. Abrasive and acidic cleaners may eventually damage the Aztec Gold finish.

**Orifice Assy:** Mineral deposits on orifice can cause water flow to spurt or not regulate. Mineral deposits may be removed from the orifice with a small round file not over 1/8" diameter or small diameter wire. **CAUTION: DO NOT** file or cut orifice material.

**Stream Regulator:** If orifice is clean, regulate flow as in instructions. If replacement is necessary, see parts list for correct regulator part number.

**Actuation of Quick Connect Water Fittings:** Cooler is provided with lead-free connectors which utilize an o-ring water seal. To remove tubing from the fitting, relieve water pressure, push in on the gray collar while pulling on the tubing.(see Fig.2) To insert tubing, push tube straight into fitting until it reaches a positive stop, approximately 3/4".

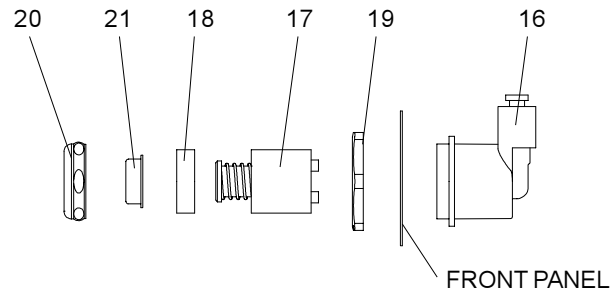
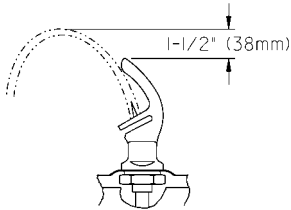


FIG. 5



CORRECT STREAM HEIGHT

FIG. 6

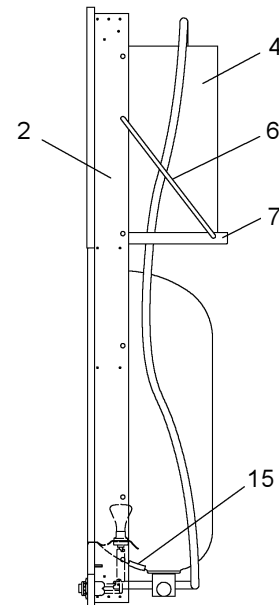
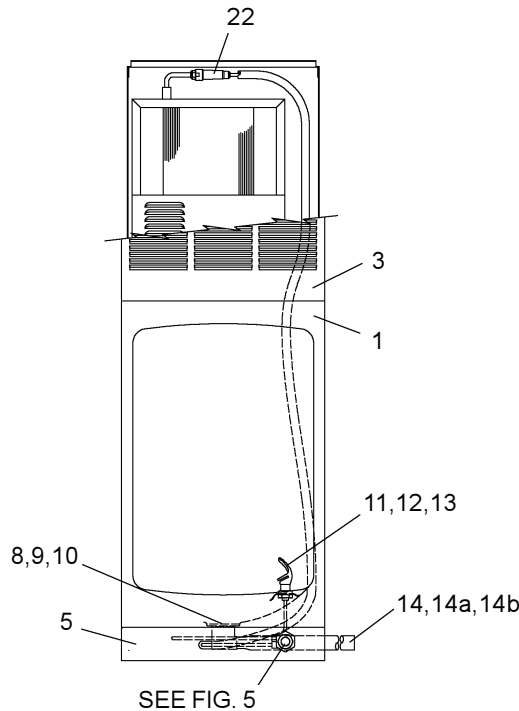
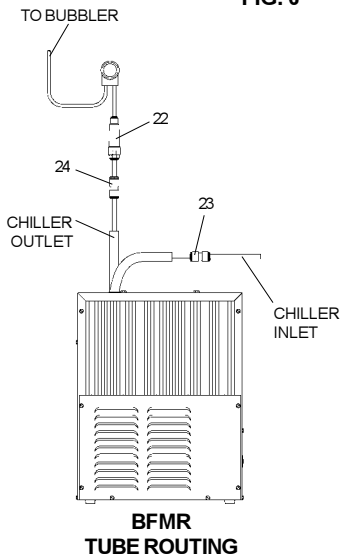


FIG. 7

**Halsey Taylor**  
 2222 CAMDEN COURT  
 OAK BROOK, IL 60523  
 630.574.3500  
 PRINTED IN U.S.A.

FOR PARTS, CONTACT YOUR LOCAL DISTRIBUTOR OR CALL 1.800.323.0620