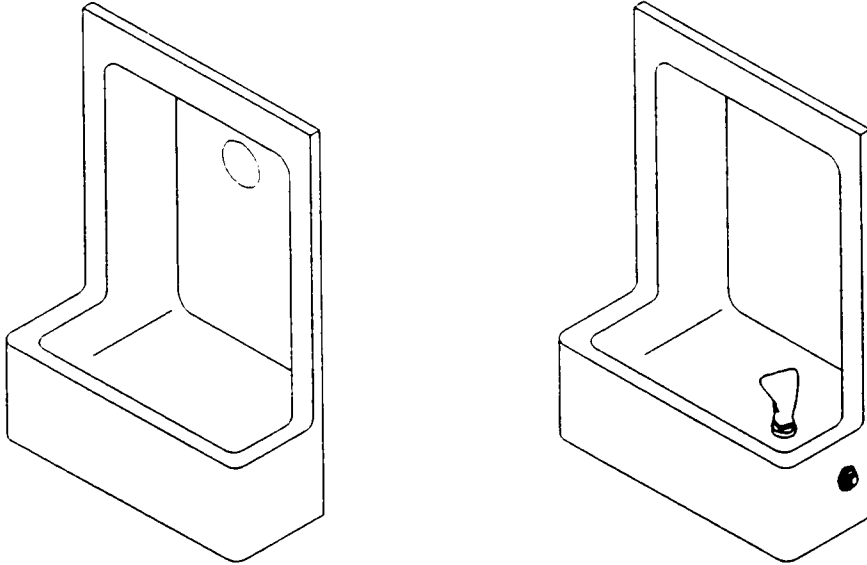


Halsey Taylor Owners Manual

Model: 5801 Fountain/5801 Fountain With 5803 Cuspidor



Fountain/Fountain With Cuspidor Installation	Page 2
Itemized parts list	Page 4
Rough-in Diagram.	Page 6

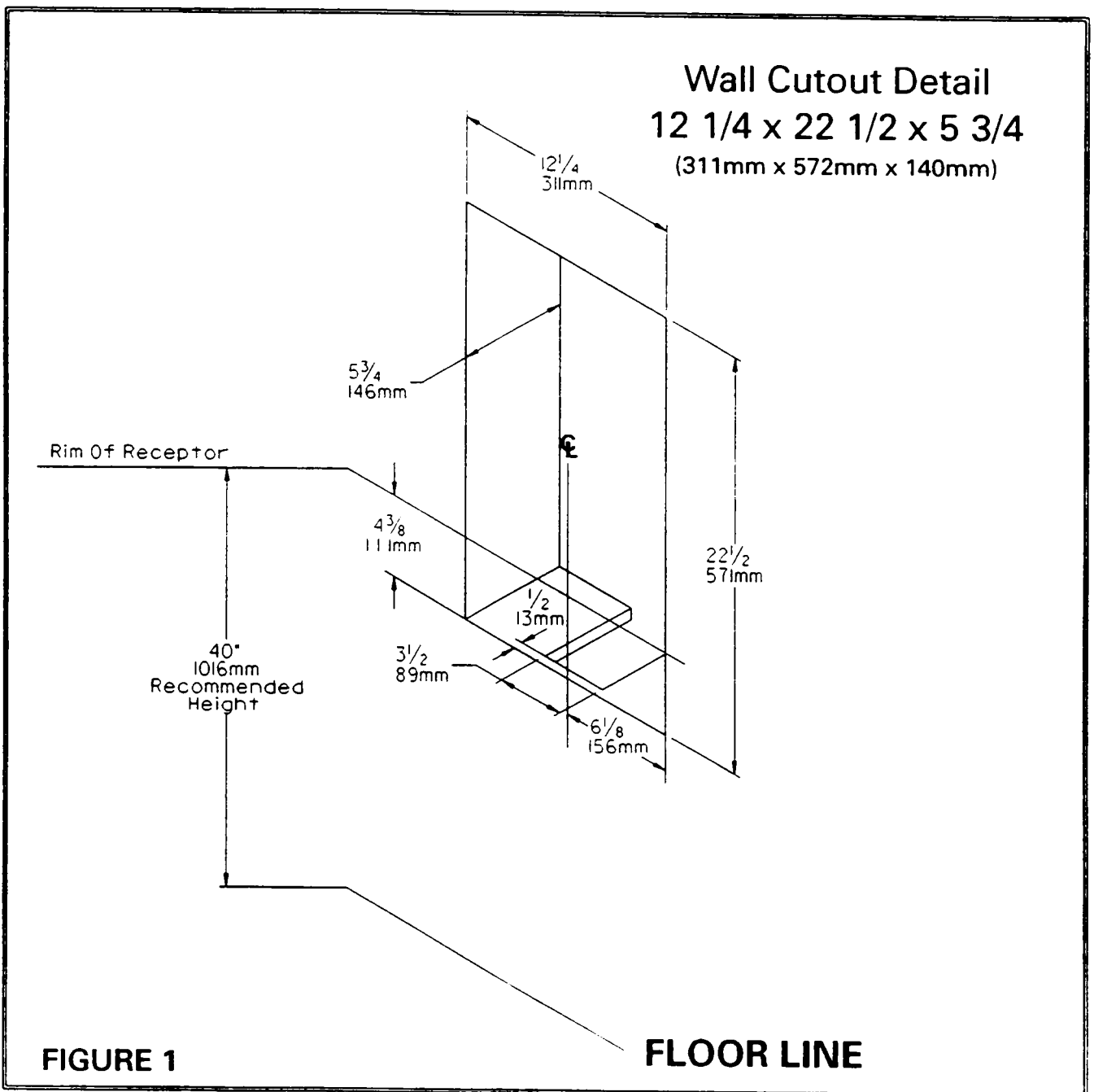
Installer

To assure you install this model easily and correctly, PLEASE READ THESE SIMPLE INSTRUCTIONS BEFORE STARTING THE INSTALLATION. CHECK YOUR INSTALLATION FOR COMPLIANCE WITH PLUMBING, ELECTRICAL AND OTHER APPLICABLE CODES. After installation, leave these instructions inside the cooler for future reference.

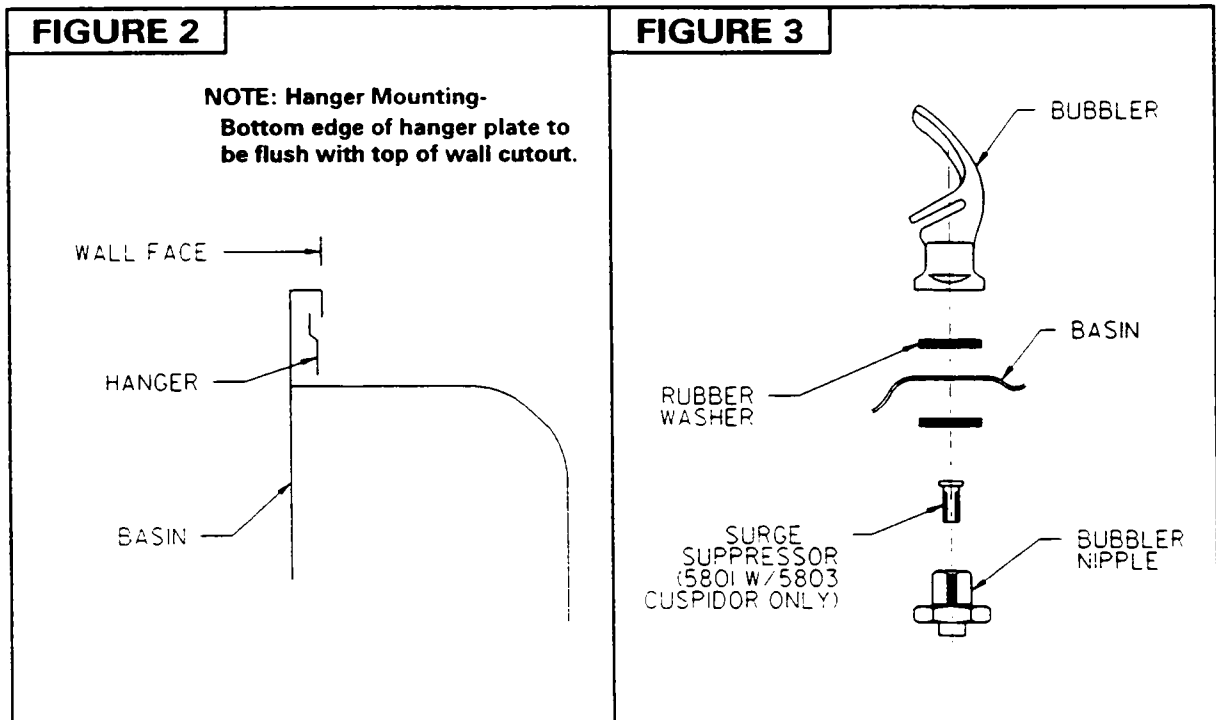
IMPORTANT

INSTALLATION INSTRUCTIONS

1. Prepare the wall cutout opening(s). Refer to Wall Cutout Detail (See Fig. 1).
2. Prepare waste connection(s) and water supply hookup connection. Refer to roughin drawing for location details (See Page 6). NOTE: Access to the rear of the fountain is desirable to ease installation. If rear access is not obtainable an access panel (furnished by others) should be installed below the fountain.
3. Install the fountain hanger bracket(s) to the upper edge of the wall cutout. Remove bottom cover plates from the fountains. Save the cover plates and screws for reinstallation.

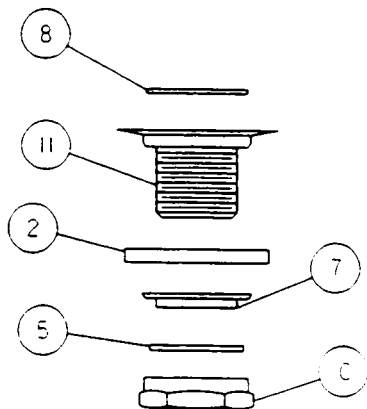


4. Install the basin. Place the upper edge of the basin above the hanger bracket. Slide the basin down until it engages the hanger. Be sure the basin is firmly engaged before releasing it. Secure the bottom of the fountain to the wall. If fountain is used with the 5803 Cuspidor repeat above steps. **NOTE: SCREWS FOR ATTACHING THE FOUNTAIN HANGER BRACKET AND BASIN ARE NOT INCLUDED.**
5. Connect waste line traps to the fountain (and cuspidor if required). Connect water supply line service stop to the water inlet line on the 5801 Fountain. Fountain is supplied with a 3/8" copper water hookup line with "Y" Strainer. The fountain must be connected through the "Y" Strainer to eliminate damage to the water regulator on/off control. **NOTE: WASTELINE TRAP(S) AND SERVICE SUPPLY STOPS ARE NOT INCLUDED.**
6. 5803 Cuspidor only. Connect outlet of the check valve to the inlet line, to the sprayer head, on the 5803 Cuspidor. Check valve flow direction must be as shown in DETAIL C for correct operation.
7. Open service stop and operate push button to purge air from system. Check thoroughly for leaks. Check stream height from bubbler. Stream height is factory set at 45-50 PSI. If supply pressure varies greatly from this, remove items 15 and 16 and adjust screw on regulator (item 23). Clockwise adjustment will raise stream and CCW adjustment will lower stream height. For best adjustment stream height should be approximately 1-1/2" (38 mm) above the bubbler guard. (See Figure 5 on page 7).
8. Assemble cover plate to bottom of fountain with screws supplied.

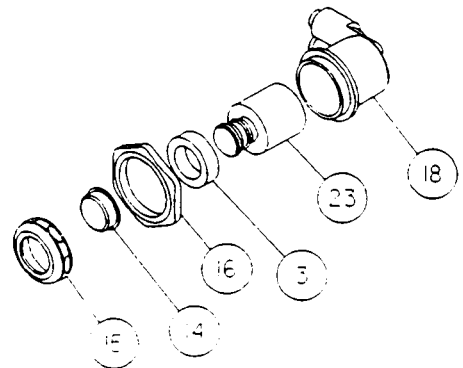


ITEMIZED PARTS LIST

ITEM	5801 FTN	5801 W/CUSP	5803 CUSP	DESCRIPTION
1	-	-	100115824740	Gasket 1-1/4 I.D.
2	100147140560	100147140560	100147140560	Gasket
3	10031C	10031C	10031C	Nut - Retainer
4	100322740560	100322740560	100322740560	Gasket - Black
5	100352940560	100352940560	100352940560	Gasket - Slipnut
6	-	102688531550	-	Suppressor - Surge
7	110346220550	110346220550	110346220550	Locknut - 1 1/2 x 11 1/2
8	160270508640	160270508640	160270508640	Strainer Plate - Chrome
9	160346108640	160346108640	160346108640	Tailpiece - 1 1/2 OD x 4
10	160346308640	160346308640	160346308640	Slipnut - 1 1/2
11	161637308640	161637308640	161637308640	Drain Plug - Chrome
12	170639442830	170639442830	400825342830	Basin
13	23044C	23044C	400952143730	Bottom Cover
14	40048C	40048C	-	Button - Chrome
15	40089C	40089C	-	Cover Nut - Chrome
16	40169C	40169C	-	Hex Nut - Chrome
17	-	-	41154208640	Nut
18	50985C	50985C	-	Regulator Holder
19	51546C	51546C	-	Bubbler - Chrome
20	60119C	60119C	-	Tube - Cu 1/4 x 5.00 Lg
21	-	-	601563851550	Tube Assy
22	-	-	610810751640	Cuspidor Head
23	61313C	61313C	-	Regulator
24	62304C	66209C	-	Tube Assy - Bubbler
25	70788C	70788C	-	Y-Strainer
26	-	75494C	-	Check Valve - 3/8
NS	401495443730	401495443730	401495143730	Basin Hanger

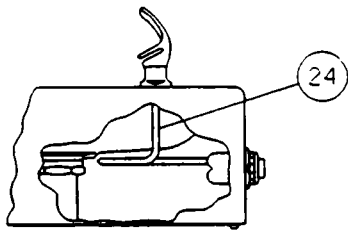
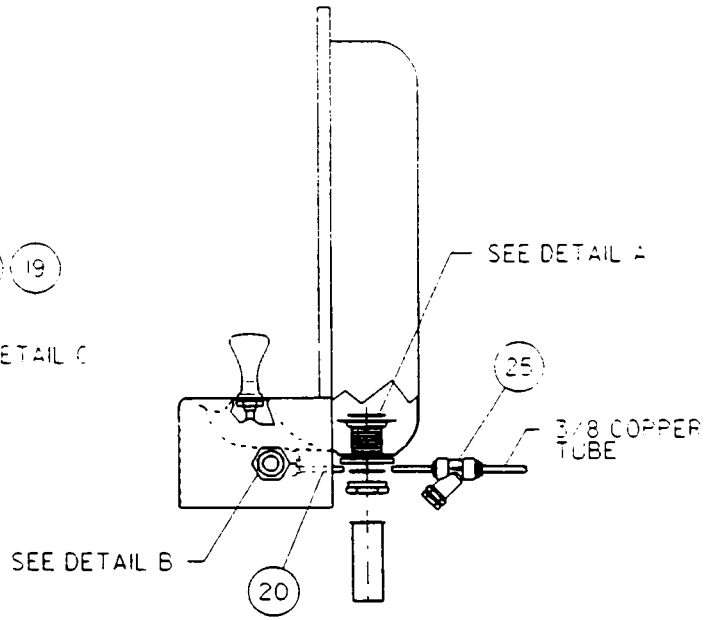
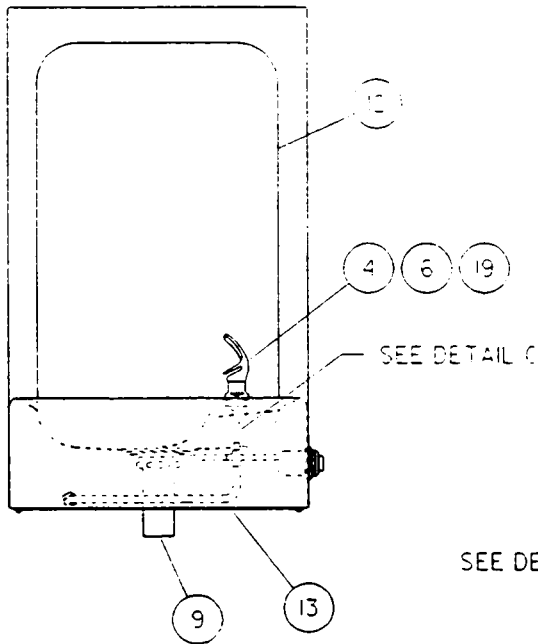


DETAIL A

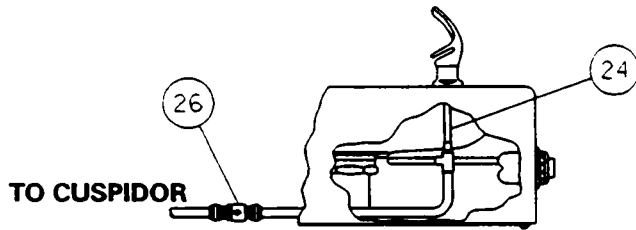


DETAIL B

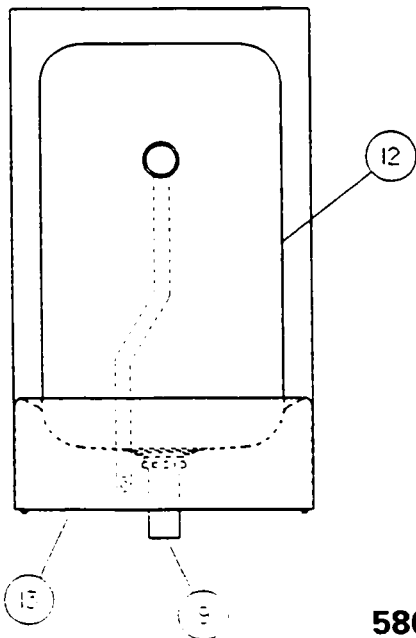
5801 FOUNTAIN



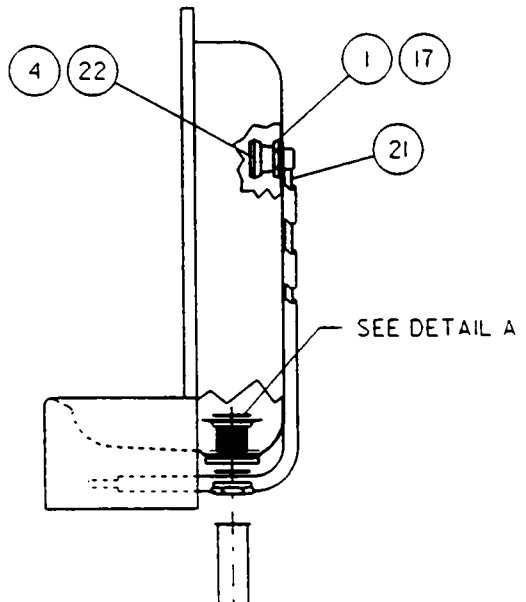
**DETAIL C
5801 FTN**



**DETAIL C
5803 FTN W/CUSP**

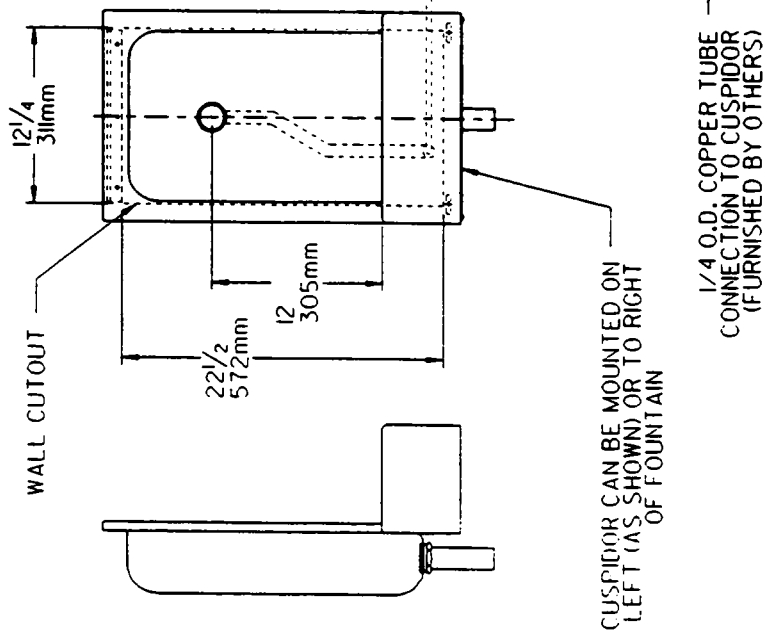


5803 CUSPIDOR

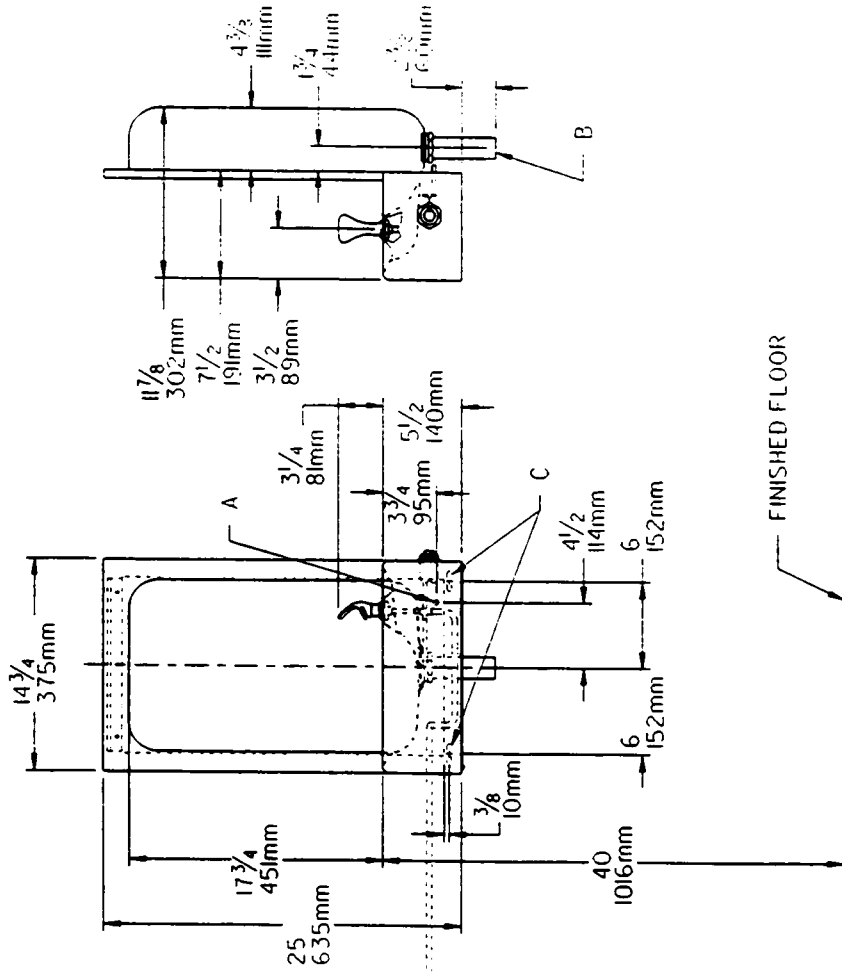


ROUGH - IN

5803 CUSPIDOR



5801 FOUNTAIN

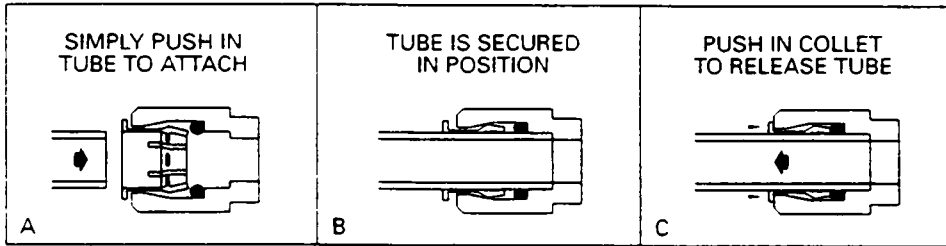


LEGEND

- A - Recommended Water Supply Location 3/8 O.D. Tube Connect Stub 1-1/2 IN. (38mm) Out From Wall Shut Off By Others
- B - 1-1/2" O.D. Tailpiece (Trap Not Furnished)
- C - Location For Wall Screws

Actuation of Quick Connect Water Fittings:

Cooler is provided with lead-free connectors which utilize an o-ring water seal. To remove tubing from the fitting, relieve water pressure, push in on the gray collar while pulling out on the tubing. To insert tubing, push tube straight into fitting until it reaches a positive stop, approximately 3/4" (19mm).



INSERT TUBE TO A POSITIVE STOP - APPROXIMATELY 3/4 OF AN INCH

PUSHING TUBE IN BEFORE PULLING IT OUT HELPS TO RELEASE TUBE

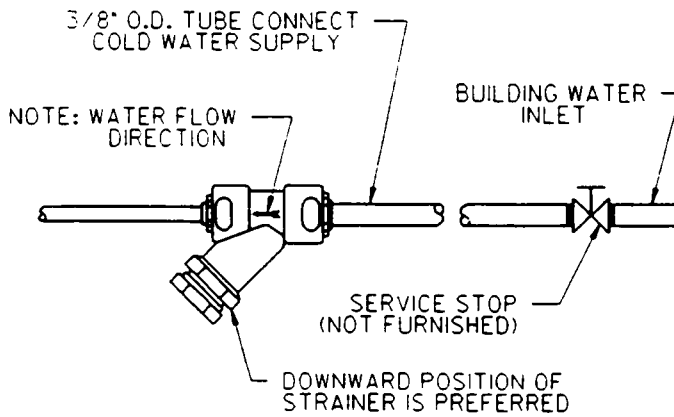
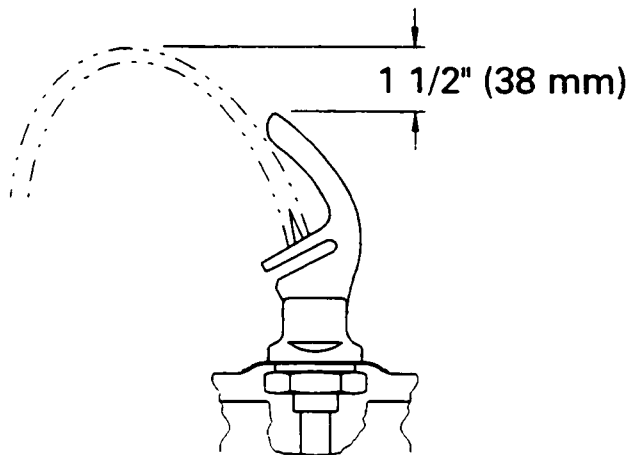


FIGURE 4



CORRECT STREAM HEIGHT

FIGURE 5