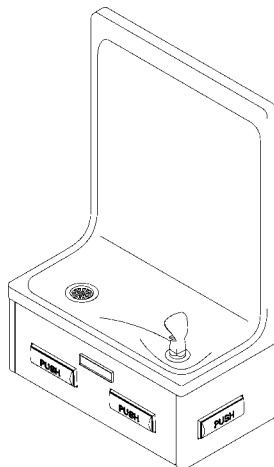


Halsey Taylor Owners Manual

Wall Mount Fountain



INSTALLER

Halsey Taylor Fountains are among the easiest to install Fountains on the market today. To assure you install these models easily and correctly, **PLEASE READ THESE SIMPLE INSTRUCTIONS BEFORE STARTING THE INSTALLATION. CHECK YOUR INSTALLATION FOR COMPLIANCE WITH PLUMBING, ELECTRICAL, AND OTHER APPLICABLE CODES.** After installation, leave these instructions with the Fountain for future reference.

IMPORTANT

ALL SERVICE TO BE PERFORMED BY AN AUTHORIZED SERVICE PERSON

IMPORTANT! INSTALLER PLEASE NOTE.

THE GROUNDING OF ELECTRICAL EQUIPMENT SUCH AS TELEPHONE, COMPUTERS, ETC. TO WATER LINES IS A COMMON PROCEDURE. THIS GROUNDING MAY BE IN THE BUILDING OR MAY OCCUR AWAY FROM THE BUILDING. THIS GROUNDING CAN CAUSE ELECTRICAL FEEDBACK INTO A FOUNTAIN, CREATING AN ELECTROLYSIS WHICH CAUSES A METALLIC TASTE OR AN INCREASE IN THE METAL CONTENT OF THE WATER. THIS CONDITION IS AVOIDABLE BY USING THE PROPER MATERIALS AS INDICATED. ANY DRAIN FITTINGS PROVIDED BY THE INSTALLER SHOULD BE MADE OF PLASTIC TO ELECTRICALLY ISOLATE THE FOUNTAIN FROM THE BUILDING PLUMBING SYSTEM.

1. Water supply 3/8" O.D. unplated copper tube. Waste 1-1/4" O.D. Contractor to supply waste trap and service stop valve in accordance with local code.
2. Connecting lines to be made of unplated copper and should be thoroughly flushed to remove all foreign matter before being connected to fountain. This fountain is manufactured in such a manner that it does not in any way cause taste, odor, color, or sediment problems.
3. These products are designed to operate on 20 psig to 105 psig supply line pressure. If inlet pressure is above 105 psig, a pressure regulator must be installed in the supply line. Any damage caused by reason of connecting this product to supply line pressures lower than 20 psig or higher than 105 psig is not covered by warranty.

ROUGH-IN DIMENSIONS

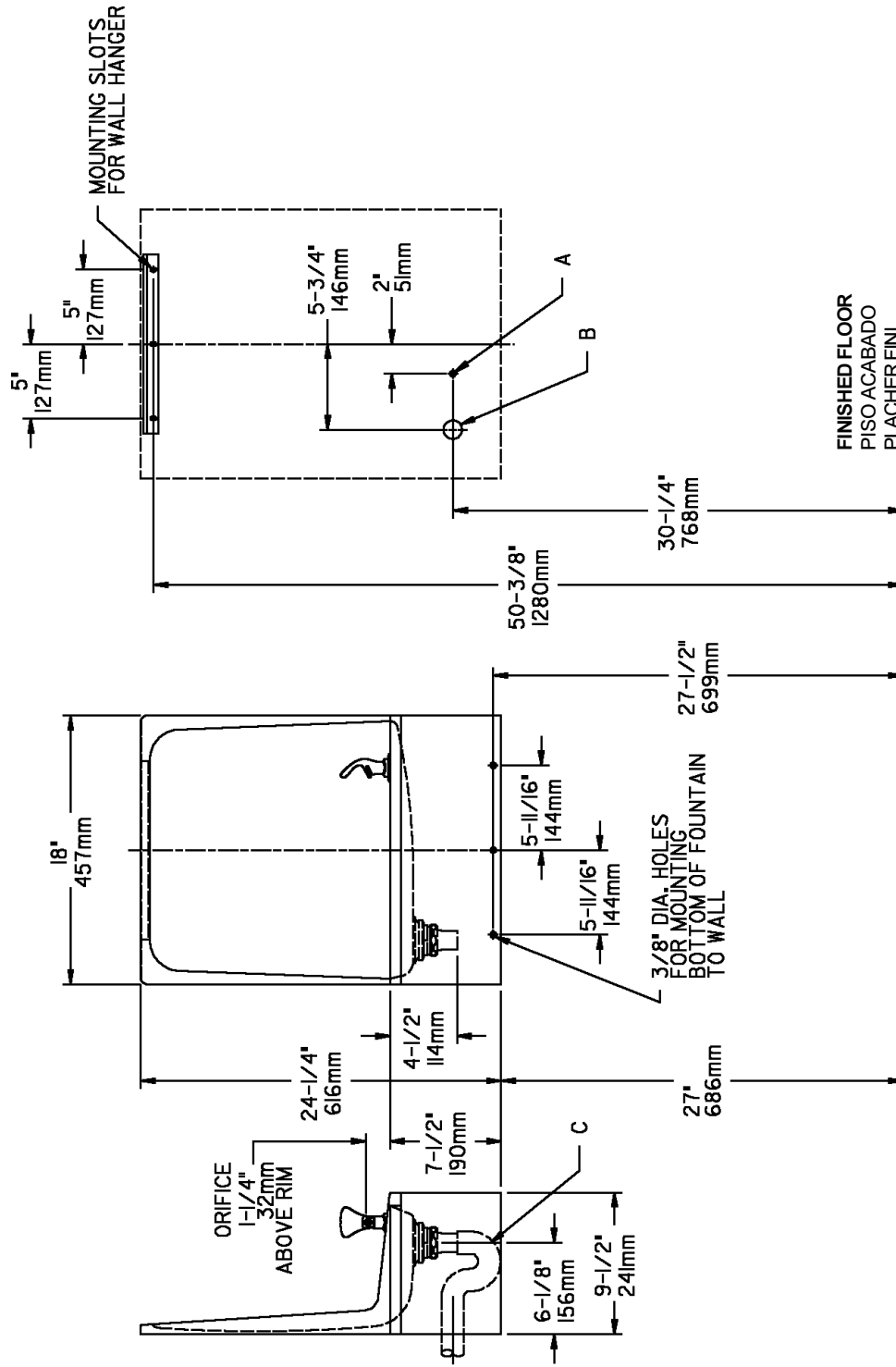


FIG. 1

LEGEND/LEYENDA/LÉGENDE
A = RECOMMENDED WATER SUPPLY LOCATION 3/8" O.D. UNPLATED COPPER TUBE CONNECT STUB 1-1/2" IN. (38 mm) OUT FROM WALL SHUT OFF BY OTHERS
 SE RECOMIENDA UBICAR EL TUBO CORTO DE CONEXIÓN AL TUBO DE COBRE SIN CHAPAR DE 3/8" DE DIÁM. EXT. A 1-1/2" (38 mm) FUERA DE LA LLAVE DE PASO EN LA PARED COLOCADO POR TERCEROS.
 EMLACEMENT RECOMMANDÉ D'ALIMENTATION EN EAU PAR TUBE EN CUIVRE NON PLAQUÉ DE 3/8 PO. (9.5 mm) D.E. CONNECTANT UNE TUYAUTERIE DE 1-1/2 PO. (38 mm) DÉPUIS LE ROBINET D'ARRÊT FOURNI PAR D'AUTRES.
B = RECOMMENDED LOCATION FOR WASTE OUTLET 1-1/4" O.D. DRAIN
 UBICACION RECOMENDADA PARA EL DRENAJE DE SALIDA DE AGUA DE 1 1/4" DE DIÁMETRO.
C = 1-1/4 TRAP NOT FURNISHED**
 EMLACEMENT RECOMANDÉ POUR LE DRAIN DE D.E. 1-1/4" DE SORTIE D'EAU.
 PURGADOR DE 1 1/4" NO PROPORCIONADO**
 SIPHON 1-1/4 NON FOURNI**

HANGER BRACKET AND TRAP INSTALLATION

1. Mount the hanger bracket and trap as shown in Fig 1.
NOTE: Hanger bracket **MUST** be supported securely. Add fixture support carrier if wall will not provide adequate support.
IMPORTANT:
 - 5-3/4" dimension from centerline of unit to centerline of trap must be maintained for proper fit.
 - Anchor hanger securely to wall using all mounting holes.

INSTALLATION OF FOUNTAIN

2. Hang the fountain on the hanger bracket. Be certain the hanger bracket is engaged properly in the basin.
3. Remove the access panel on the underside of the fountain and set aside.
4. Install a 3/8" O.D. unplated copper water line between the service stop valve and fountain. Remove burr from outside of water line. Insert the 3/8" O.D. water line to a positive stop approximately 3/4 inch (See figures 2 and 3). **DO NOT SOLDER TUBES INSERTED INTO THE STRAINER AS DAMAGE TO THE O-RINGS MAY RESULT.**
5. **NOTE:** If required, the 1/4 O.D. water inlet line to fountain may be cut to a desired length. However, if water line is cut, all burrs must be removed from outside of tube before inserting into the strainer.
6. Remove the slip nut and gasket from the trap and install them on the fountain waste line, making sure that the end of the waste line fits into the trap. Assemble the slip nut and gasket to the trap and tighten securely.

START UP

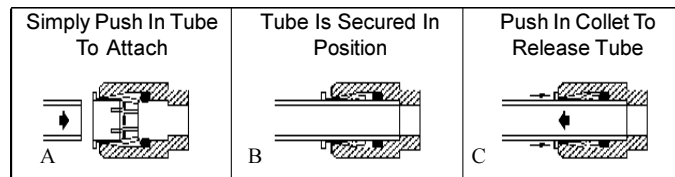
7. Turn on the building water supply and check all connections for leaks.
8. Depress push bar until all air is bled from fountain water system. A steady stream flow assures all air is removed.
9. Stream height is factory set at 45-50 PSI. If supply pressure varies greatly from this, readjust stream height to approximately 1-1/2" above the bubbler guard by turning adjustment screw, accessible by removing front push panel. (See Fig. 4 & 5)
10. Recheck all water and drain connections with water flowing through system.
11. Replace the access panel and secure by re-tightening all screws.
12. Water Valve Mechanism

ADJUSTMENT PROCEDURE:

- Turn adjustment screw "Counter-clockwise" until water flow from bubbler starts.
- Turn adjustment screw "Clockwise" until water flow stops, then turn an additional 1/2 turn.

NOTE: Adjustments stated above are as viewed from underneath unit.

OPERATION OF QUICK CONNECT FITTINGS



Pushing Tube In Before Pulling It Out Helps To Release Tube.

FIG. 2

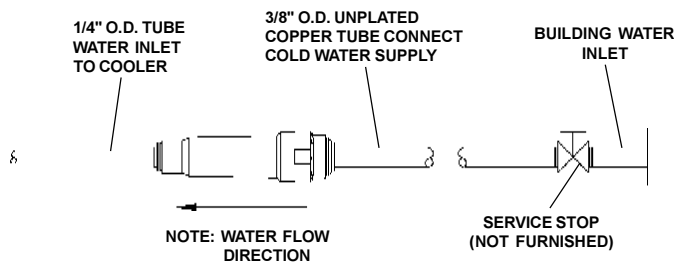
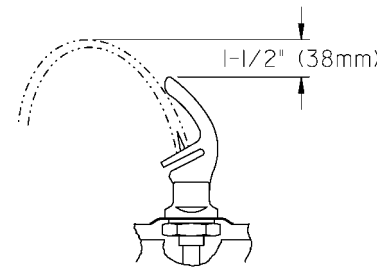


FIG. 3



CORRECT STREAM HEIGHT

FIG. 4

5701*A FOUNTAIN

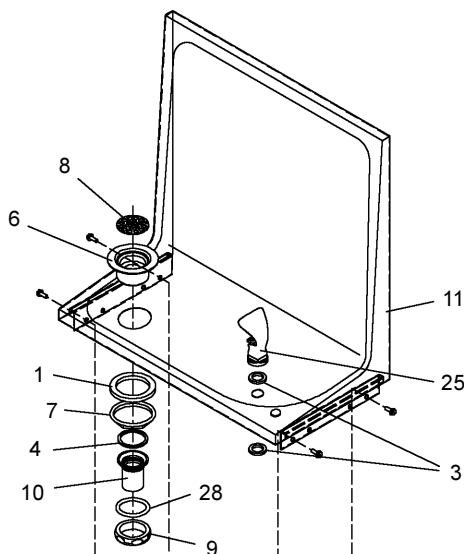
ITEMIZED PARTS LIST

ITEM NO.	PARTNO.	DESCRIPTION
1	100147140560	Gasket
2	15005C	Retaining Nut
3	100322740560	Gasket - Bubbler
4	100352940560	Gasket - Slip Nut
5	101514331640	Push Bar Insert
6	102639931640	Drain Plug
7	110346220550	Locknut 1 1/2-11 1/2
8	160270508640	Strainer
9	160346308640	Slipnut
10	160356008550	Tailpiece
11	171030042830	Basin
12	22900C	Bracket - Front Push
13	22901C	Bracket - Side Push
14	23003C	Bracket - Regulator Mounting
15	26975C	Bracket - Basin Mounting (Right Side)
16	26976C	Panel - Bottom Dispenser
17	26599C	Panel - Front (Platinum)
	26600C	Panel - Front (Stainless Steel)
	26601C	Panel - Front (Almond)
	26602C	Panel - Front (Slate)
18	26977C	Panel - Left Side (Platinum)
	26978C	Panel - Left Side (Stainless Steel)
	26979C	Panel - Left Side (Almond)
	26980C	Panel - Left Side (Slate)
19	26981C	Panel - Right Side (Platinum)
	26982C	Panel - Right Side (Stainless Steel)
	26983C	Panel - Right Side (Almond)
	26984C	Panel - Right Side (Slate)
20	26997C	Bracket - Basin Mounting (Left Side)
21	40045C	Hex Nut
22	50212C	Rivet - Drive Type
23	50986C	Regulator Holder
24	51531C	Pivot Block
25	51544C	Bubbler - Chrome
26	55859C	Push Bar
27	61314C	Regulator
28	101637451550	Friction Ring
29	70935C	Screw - Shoulder x 1/2" Lg.
NS	55996C	Strainer

TROUBLE SHOOTING AND MAINTENANCE

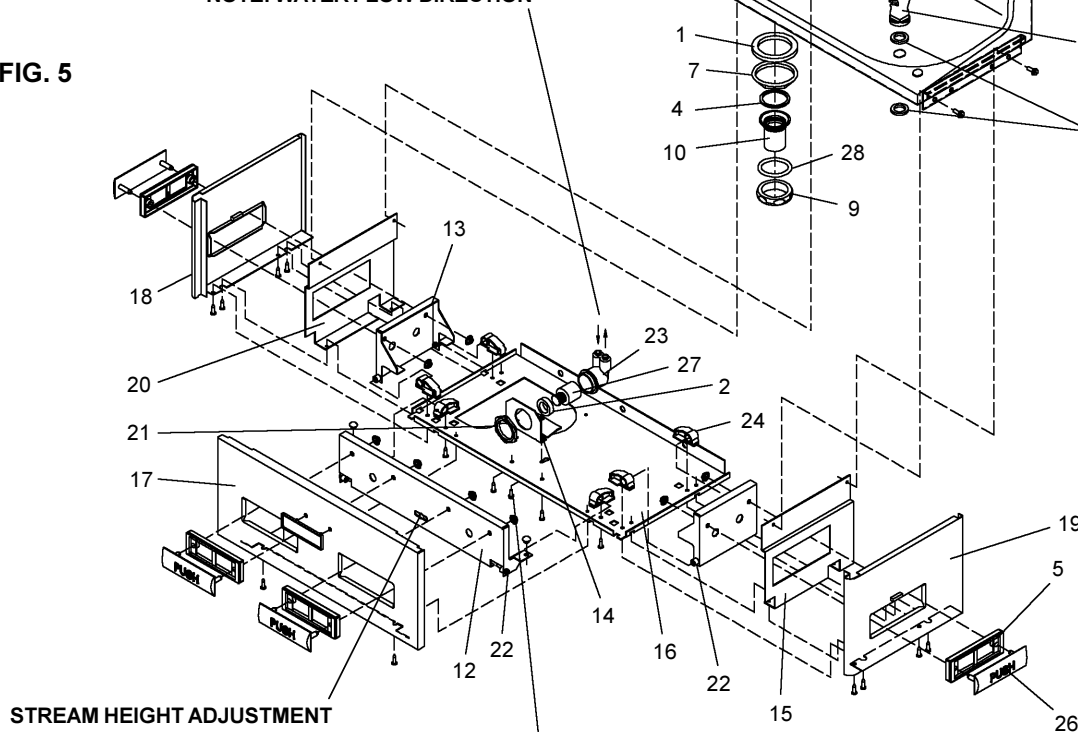
Orifice Assy: Mineral deposits on orifice can cause water flow to spurt or not regulate. Mineral deposits may be removed from the orifice with a small round file not over 1/8" diameter or small diameter wire. **CAUTION: DO NOT FILE OR CUT ORIFICE MATERIAL.**

Stream regulator: If orifice is clean, regulate flow as in "START UP" instructions on page 3. If replacement is necessary, see parts list for correct regulator part number.



NOTE: WATER FLOW DIRECTION

FIG. 5



ADJUST THIS SCREW TO ELIMINATE MECHANISM "FREE PLAY" OR CONTINUOUS FLOW FROM BUBBLER CONDITIONS.

Halsey Taylor

2222 CAMDEN COURT
OAKBROOK, IL 60523
630.574.3500

PRINTED IN U.S.A.

FOR PARTS, CONTACT YOUR LOCAL DISTRIBUTOR OR CALL 1.800.323.0620