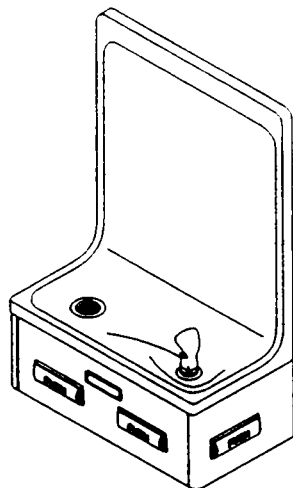


Halsey Taylor Owners Manual

Model: 5701 FOUNTAIN



Installer

The 5701 model fountain is among the easiest to install fountain units on the market today. To assure you install this model easily and correctly, PLEASE READ THESE SIMPLE INSTRUCTIONS BEFORE STARTING THE INSTALLATION. CHECK YOUR INSTALLATION FOR COMPLIANCE WITH PLUMBING, ELECTRICAL AND OTHER APPLICABLE CODES. After installation, leave these instructions inside the fountain for future reference.

IMPORTANT

ALL SERVICE TO BE PERFORMED BY AN AUTHORIZED SERVICE PERSON

1. Water supply 3/8" IPS. Waste 1-1/4" IPS. Contractor to supply waste trap and service stop valve in accordance with local codes.
2. Connecting lines should be thoroughly flushed to remove all foreign matter before being connected to cooler. This cooler is manufactured in such a manner that it does not in any way cause taste, odor, color or sediment problems. If a taste, odor or sediment problem is prevalent, try installing our water filter module on the supply line.
3. For TROUBLE SHOOTING AND MAINTENANCE GUIDE, see page 4.
WARNING: Warranty is voided if:
- Installation is not made in accordance with current Halsey Taylor instructions.

ROUGH-IN DIMENSIONS

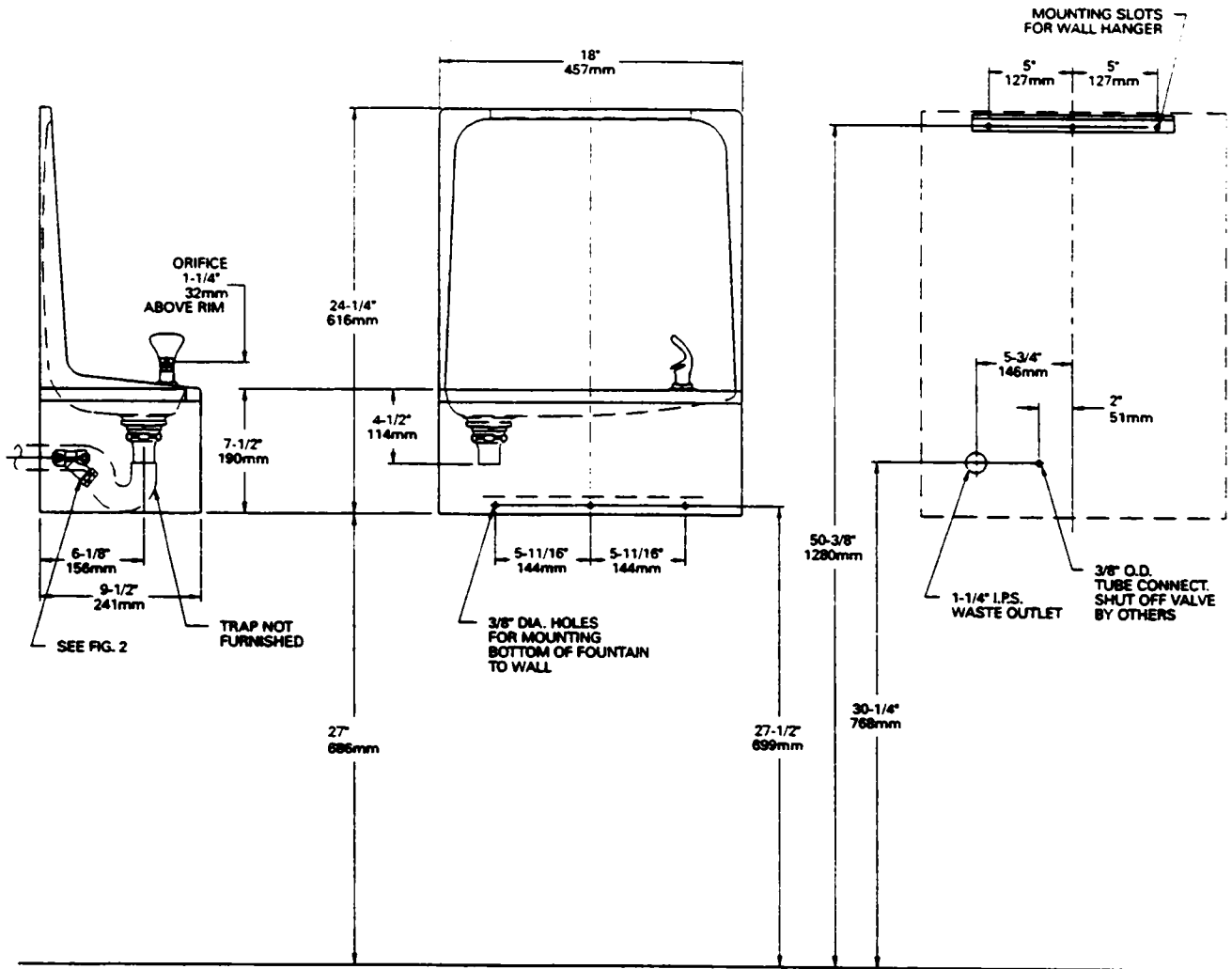


FIG. 1

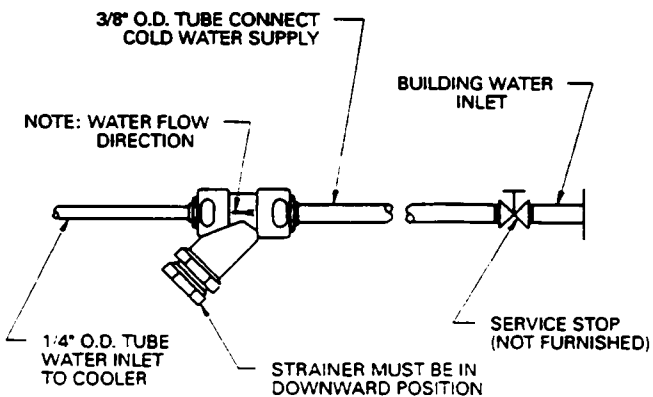
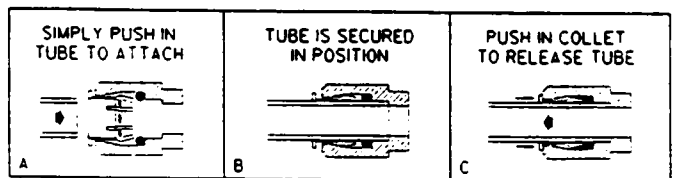


FIG. 2

OPERATION OF QUICK CONNECT FITTINGS



PUSHING TUBE IN BEFORE PULLING IT OUT HELPS TO RELEASE TUBE

FIG. 3

HANGER BRACKET & TRAP INSTALLATION

- 1). Mount the hanger bracket and trap as shown in Figure 1.

NOTE: Hanger bracket **MUST** be supported securely.

Add fixture support carrier if wall will not provide adequate support.

IMPORTANT:

- 5 3/4" dimension from centerline of unit to centerline of trap must be maintained for proper fit.
 - Anchor hanger securely to wall using all mounting holes.
- 2). Install 3/8" IPS female x 3/8" compression straight service stop to the building water inlet stub.

INSTALLATION OF FOUNTAIN

- 3). Hang the fountain on the hanger bracket. Be certain the hanger bracket is engaged properly in the basin.
- 4). Remove the access panel on the underside of the fountain and set aside.
- 5). Connect the 3/8" O.D. water line from the fountain to the service stop valve.
(See Figures 2 & 3)
- 6). NOTE: If required, the water inlet line to fountain may be cut to a desired length. However, if water line is cut, all burrs must be removed from outside of tube before reinserting into the Y-strainer.
- 7). Remove the slip nut and gasket from the trap and install them on the fountain waste line - making sure that the end of the waste line fits into the trap. Assemble the slip nut and gasket to the trap and tighten securely.

START UP

- 8). Turn on the building water supply and check all connections for leaks.
- 9). Depress push bar until all air is bled from fountain water system. A steady stream flow assures all air is removed.
- 10). Stream height is factory set at 45-50 PSI. If supply pressure varies greatly from this, readjust stream height to approximately 1-1/2" above the bubbler guard by turning adjustment screw, accessible by removing front push panel. (See Figures 4 & 5)
- 11). Recheck all water and drain connections with water flowing through system.
- 12). Replace the access panel and secure by re-tightening all screws.
- 13). Water Valve Mechanism - ADJUSTMENT PROCEDURE:
 - Turn adjustment screw "Counter-clockwise" until water flow from bubbler starts.
 - Turn adjustment screw "Clockwise" until water flow stops, then turn an additional 1/2 turn.

NOTE: Adjustments stated above are as viewed from underneath unit.

CORRECT STREAM
HEIGHT

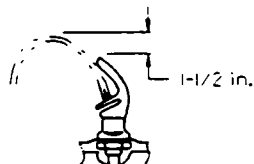


FIG. 4

ITEM NO.	PART NO.	DESCRIPTION
1	10-01471-40-560	Gasket
2	10031-C	Retaining Nut
3	10-03227-40-560	Gasket - Bubbler
4	10-03529-40-560	Gasket - Slip Nut
5	10-15143-31-640	Push Bar Insert
6	10-26399-31-640	Drain Plug
7	11-03462-20-550	Locknut 1 1/2-11 1/2
8	16-02705-08-640	Strainer
9	16-03463-08-640	Slipnut
10	16-03560-08-550	Tailpiece
11	17-10300-42-830	Basin
12	22900-C	Bracket - Front Push
13	22901-C	Bracket - Side Push
14	23003-C	Bracket - Regulator Mounting
15	26975-C	Bracket - Basin Mounting (Right Side)
16	26976-C	Panel - Bottom Dispenser
17	26599-C	Panel - Front (Platinum)
	26600-C	Panel - Front (Stainless Steel)
	26601-C	Panel - Front (Almond)
	26602-C	Panel - Front (Slate)
18	26977-C	Panel - Left Side (Platinum)
	26978-C	Panel - Left Side (Stainless Steel)
	26979-C	Panel - Left Side (Almond)
	26980-C	Panel - Left Side (Slate)
19	26981-C	Panel - Right Side (Platinum)
	26982-C	Panel - Right Side (Stainless Steel)
	26983-C	Panel - Right Side (Almond)
	26984-C	Panel - Right Side (Slate)
20	26997-C	Bracket - Basin Mounting (Left Side)
21	40045-C	Hex Nut
22	50212-C	Rivet - Drive Type
23	50985-C	Regulator Holder
24	51531-C	Pivot Block
25	51544-C	Bubbler - Chrome
26	55859-C	Push Bar
27	61314-C	Regulator
28	10-16374-51-550	Friction Ring
NOT SHOWN	70788-C	Y - Strainer (Ref. Fig. 2 on Page 2)

TROUBLE SHOOTING & MAINTENANCE

1. Projector: If mineral deposits build up in the orifices, they can be removed by using a round file or small diameter wire. CAUTION: Care must be taken not to damage the orifices.
2. Stream Regulator: To adjust stream height see instruction No. 10 under "START UP" Section on Page 3.

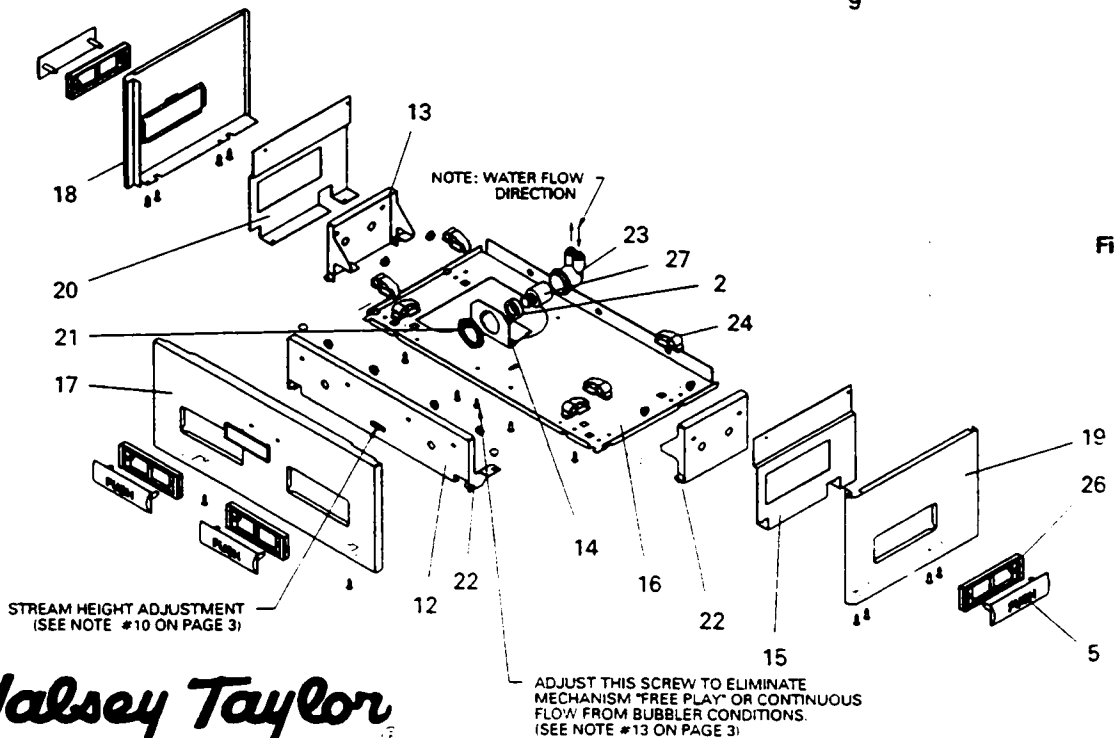
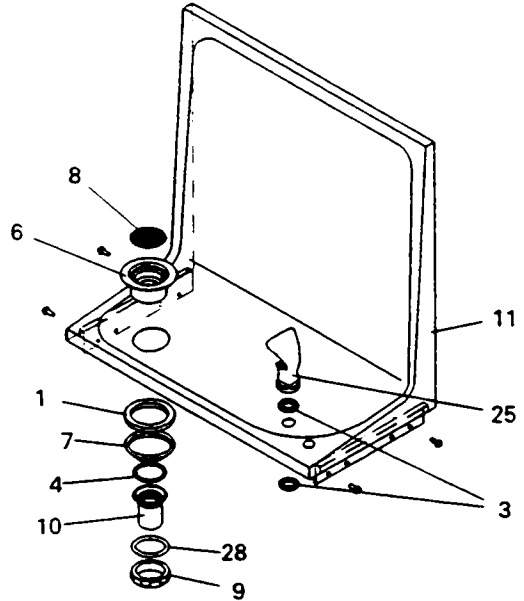


Fig. 5

Halsey Taylor

P. O. BOX 9001
OAK BROOK, IL 60521
(708) 574-3500

PRINTED IN U. S. A.

FOR PARTS, CONTACT YOUR LOCAL DISTRIBUTOR OR CALL 1-800-323-0620