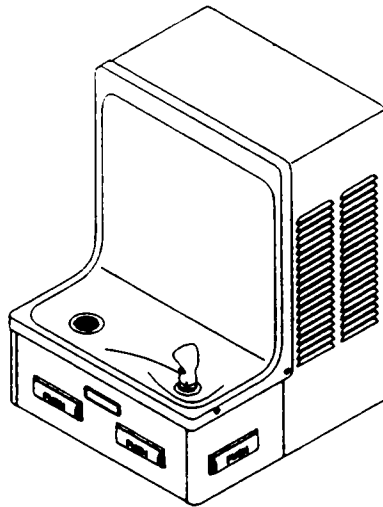


# Halsey Taylor Owners Manual

Models: WC8A-F-1-Q, WC8A-FS-1-Q

USES HFC-134A REFRIGERANT



## Installer

The WC-8 series cooler is among the easiest to install Barrier-Free Model on the market today. To assure you install this model easily and correctly, PLEASE READ THESE SIMPLE INSTRUCTIONS BEFORE STARTING THE INSTALLATION. CHECK YOUR INSTALLATION FOR COMPLIANCE WITH PLUMBING, ELECTRICAL AND OTHER APPLICABLE CODES. After installation, leave these instructions inside the cooler for future reference.

## IMPORTANT

ALL SERVICE TO BE PERFORMED BY AN AUTHORIZED SERVICE PERSON

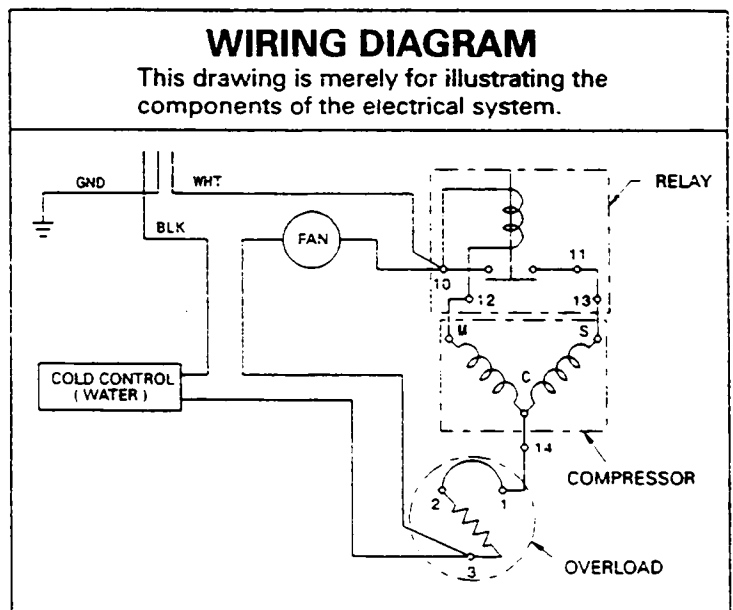
1. Insure proper ventilation by maintaining 6" (min.) clearance from cabinet louvers to wall on each side of cooler.
2. Water supply 3/8" IPS. Waste 1-1/4" IPS. Contractor to supply waste trap and service stop valve in accordance with local codes.
3. Connecting lines should be thoroughly flushed to remove all foreign matter before being connected to cooler. This cooler is manufactured in such a manner that it does not in any way cause taste, odor, color or sediment problems. If a taste, odor or sediment problem is prevalent, try installing our water filter module, Part No. 73-15242-51-550, on the supply line.
4. Electrical: Insure power supply is identical in voltage, cycle and phase to that specified on the cooler data plate. NEVER wire compressor directly to the power supply.
5. For TROUBLE SHOOTING AND MAINTENANCE GUIDE, see page 4.
6. See TROUBLE SHOOTING AND MAINTENANCE GUIDE for care of Golden Bronzitone Models.

**WARNING:** Warranty is voided if:

- The plumbing kit or glass filler is not specified for use by Halsey Taylor for this particular model.
- Installation is not made in accordance with current Halsey Taylor instructions.

## WIRING DIAGRAM

This drawing is merely for illustrating the components of the electrical system.



INSTALLER PLEASE NOTE:  
IMPORTANT

This water cooler has been designed and built to provide water to the user which has not been altered by materials in the cooler water ways. The grounding of electrical equipment such as telephones, computers, etc. to water lines is a common procedure. This grounding may be in the building but may also occur away from the building. This grounding can cause electrical feedback into a water cooler creating an electrolysis which creates a metallic taste or causes an increase in the metal content of the water. This condition is avoidable by installing the cooler using the proper materials as shown below.

NOTE: Insure proper ventilation by maintaining 6" clearance from cabinet louvers to wall on each side of cooler.

NOTICE

This water cooler must be connected to the water supply using a dielectric coupling - the cooler is furnished with a non-metallic "Y" strainer which meets this requirement.

The drain trap which is provided by the installer should also be plastic to completely isolate the cooler from the building plumbing system.

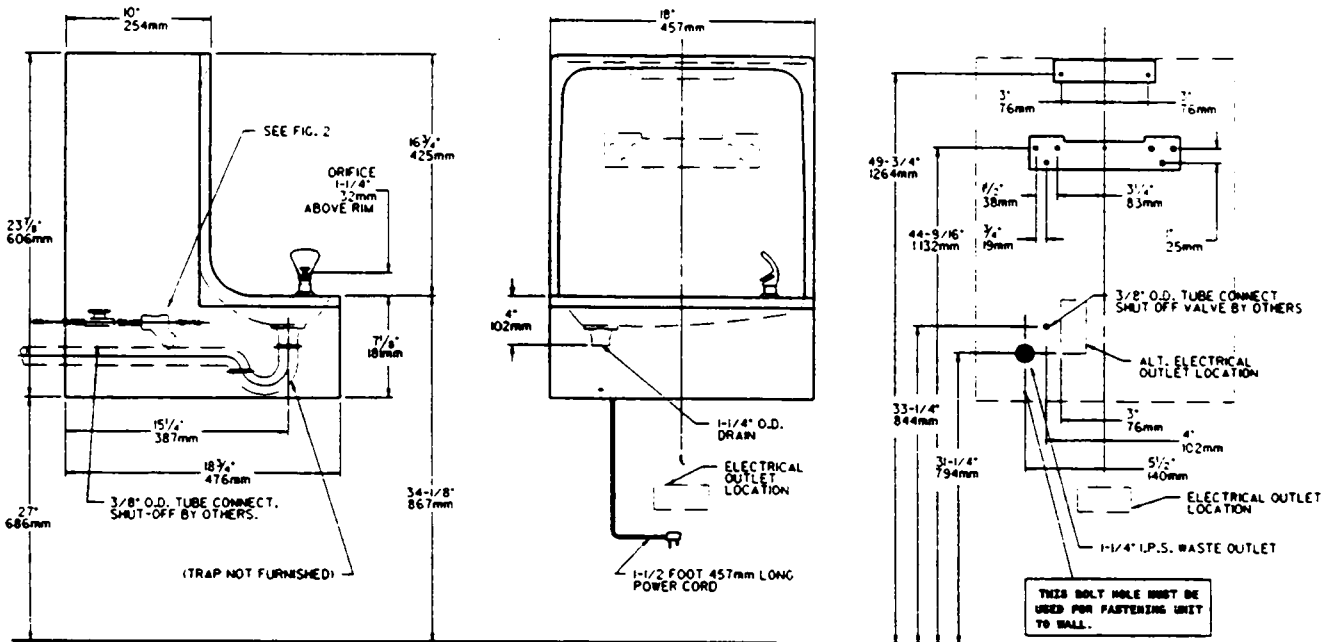


FIG. 1

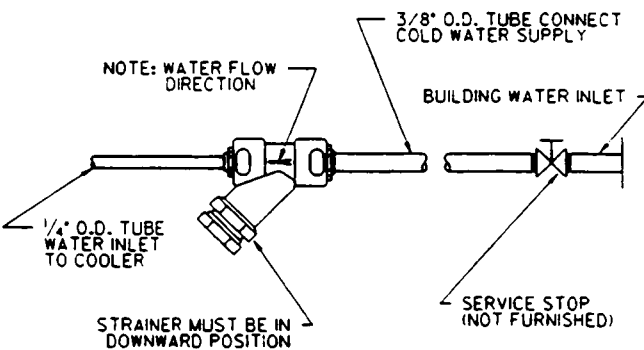


FIG. 2

HANGER BRACKET & TRAP INSTALLATION

1. Remove hanger brackets fastened to back of cooler by removing screws.
2. Mount the hanger brackets and trap as shown in Figure 1. **NOTE:** Hanger brackets **MUST** be supported securely. Add fixture support carrier if wall will not provide adequate support.

IMPORTANT:

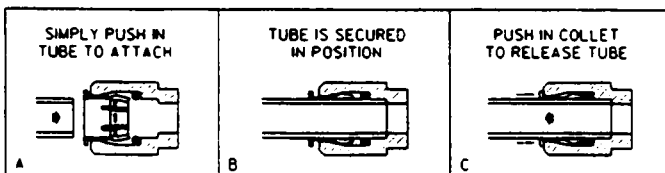
- 5 1/2 in. dimension from centerline of unit to centerline of trap must be maintained for proper fit.
- Anchor hanger securely to wall using all mounting holes.

3. Install 3/8" IPS. female x 3/8" compression straight service stop to the building water inlet stub.

INSTALLATION OF COOLER

4. Hang the cooler on the hanger brackets. Be certain the hanger brackets are engaged properly in the frame and the wrapper.
5. Remove the two (2) access panels on the underside of the cooler and set them aside.
6. Install a 3/8" O.D. water line between the service stop valve and cooler. (see Fig.2)
7. **NOTE:** If required, the 1/4" O.D. water inlet line to cooler may be cut to a desired length. However, if water line is cut, all burrs must be removed from outside of tube before inserting into the Y-strainer.

OPERATION OF QUICK CONNECT FITTINGS



PUSHING TUBE IN BEFORE PULLING IT OUT HELPS TO RELEASE TUBE

# PUSH BAR MECHANISM

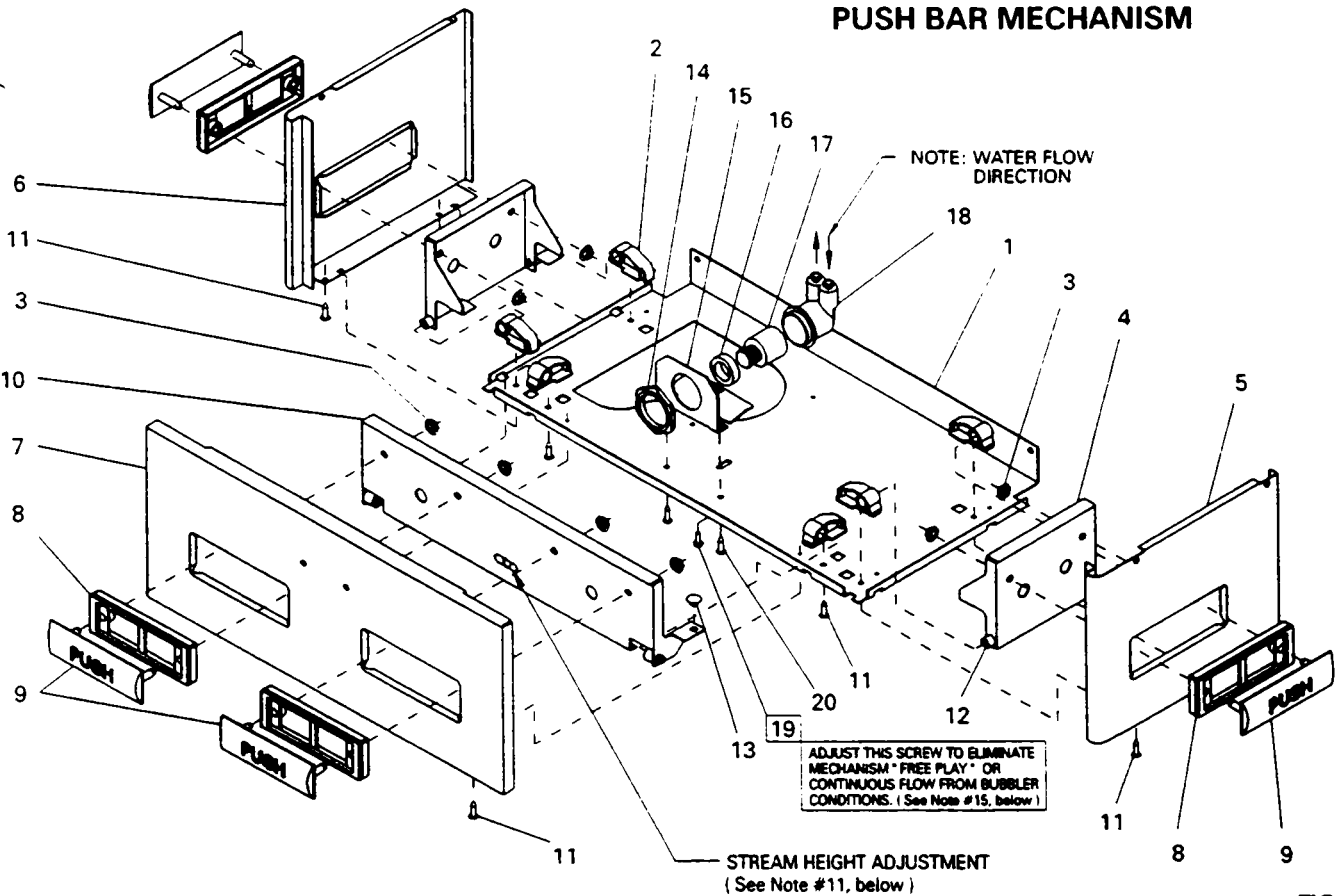


FIG. 4

- 3). Remove the slip nut and gasket from the trap and install them on the cooler waste line making sure that the end of the waste line fits into the trap. Assemble the slip nut and gasket to the trap and tighten securely.

### START UP

- 9). Turn on the building water supply and check all connections for leaks.
- 10). Depress front push bar until all air is bled from cooler water system. A steady stream flow assures all air removed.
- 11). Stream height is factory set at 45 - 50 PSI. If supply pressure varies greatly from this, readjust stream height to approximately 1-1/2" above the bubbler guard by turning adjustment screw, accessible by removing front push panel, Item No. 7 (see Fig. 4 and Fig. 5).
- 12). Recheck all water and drain connections with water flowing through system.
- 13). Plug cooler power cord into building electrical receptacle.
- 14). Replace the access panels and secure by re-tightening all screws.
- 15). Water Valve Mechanism - ADJUSTMENT PROCEDURE:
  - Turn adjustment screw (Item # 19) " Counter-Clockwise " until water flow from bubbler starts.
  - Turn adjustment screw " Clockwise " until water flow stops, THEN turn an additional 1/2 turn.

NOTE: Adjustments stated above are as viewed from underneath unit (bottom side of dispenser panel Item No. 1).

### CORRECT STREAM HEIGHT

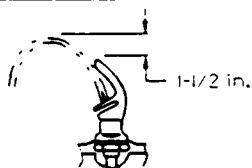


FIG. 5

ITEM NO.	PART NO.	DESCRIPTION
1	26588-C	Panel - Bottom Dispenser
2	51531-C	Block - Pivot
3	11-14117-43-620	Nut - 1/4 , Self-Threading
4	22901-C	Bracket - Side Push
5	See Color Table	Panel - Right Side
6	See Color Table	Panel - Left Side
7	See Color Table	Panel - Front Push
8	55859-C	Pushbar - Side & Front
9	55947-C	Insert - Push Bar
10	22900-C	Bracket - Front Push
11	70864-C	Screw - #8 x 5/8" Torx/slotted
12	50212-C	Rivet - Drive Type
13	51667-C	Bumper - Press Bar
14	40045-C	Hex Nut
15	23003-C	Bracket - Regulator Mounting
16	10031-C	Retaining Nut
17	61314-C	Regulator
18	50985-C	Holder - Regulator
19	70935-C	Screw - Shoulder x 1/2" Lg.
20	11-26275-43-890	Screw - Regulator Brkt. Mtg.

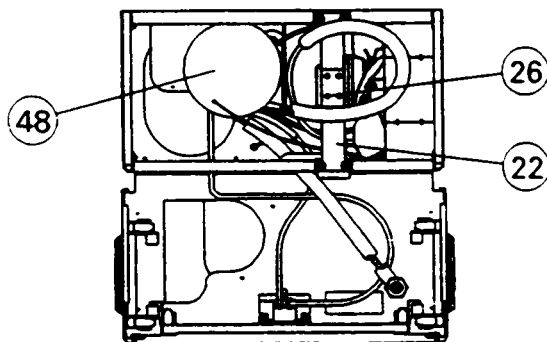
### COLOR TABLE

PANEL COLOR	Item No. 5 Part No. (w/o hole)	Item No. 5 Part No. (with hole)	Item No. 6 Part No. (w/o hole)	Item No. 6 Part No. (with hole)	Item No. 7 Part No.
Platinum Vinyl	26644-C	26659-C	26614-C	26629-C	26599-C
Stainless Steel	26637-C	26652-C	26607-C	26622-C	26600-C
Almond Vinyl	26636-C	26651-C	26606-C	26621-C	26601-C
Slate Vinyl	26646-C	26661-C	26616-C	26631-C	26602-C

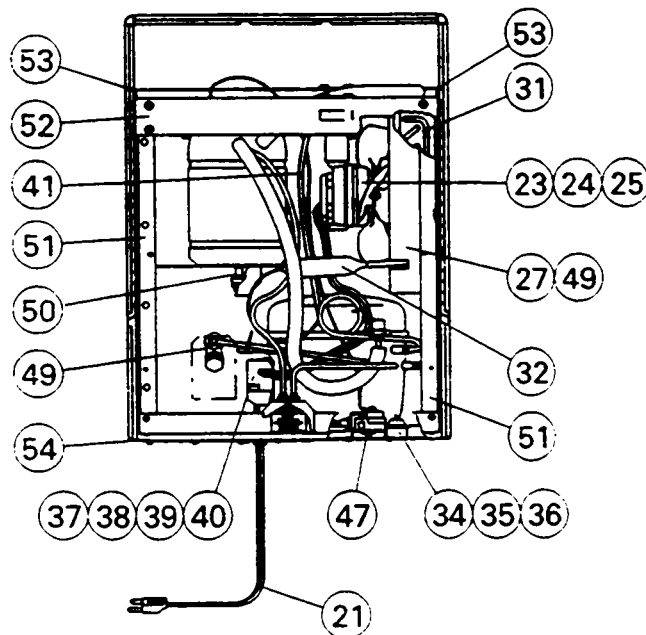
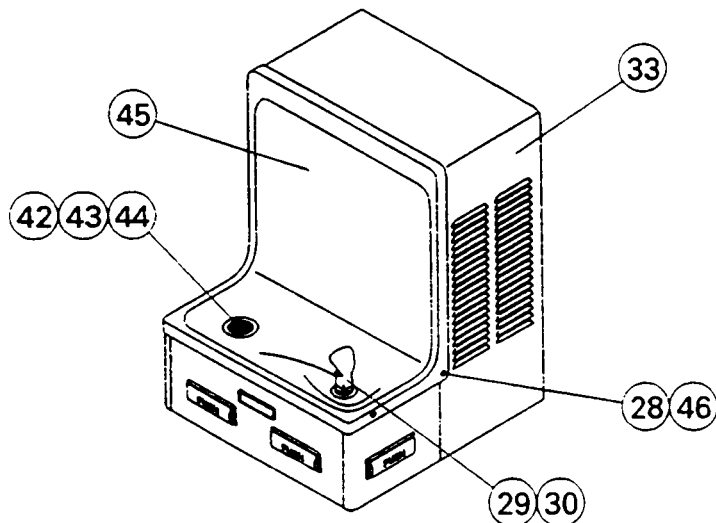
## TROUBLE SHOOTING & MAINTENANCE

ITEM NO.	PART NO.	DESCRIPTION
21	31504-C	Power Cord
22	27095-C	Fan Bracket
23	30699-C	Fan Blade
24	70018-C	Hex Nut - Fan Blade
25	31490-C	Fan Motor (115v)
	31430-C	Fan Motor (230v)
26	70009-C	Screw - #8-36 x 3/8" Lg. (Fan Motor)
27	50186-C	Shroud - Fan
28	70241-C	Clip (Front and Rear Panels)
29	51544-C	Bubbler - Chrome
30	10-03227-40-560	Gasket - Bubbler (upper and lower)
31	61515-C	Condenser
32	66202-C	Drier
33	26680-C	Wrapper - Platinum
	26682-C	Wrapper - Slate
	22707-C	Wrapper - Almond
	22708-C	Wrapper - Stainless Steel
34	50144-C	Grommet - Compressor Mtg.
35	70184-C	Hair Pin - Cotter
36	70418-C	Washer
37*	35767-C	Compressor Serv. Pak (115v)
	35763-C	Compressor Serv. Pak (230v)
38	19-42439-01-550	Cover - Electrical Shield (Overload)
39	31025-C	Overload/Relay Assembly (115v)
	31024-C	Overload/Relay Assembly (230v)
40	35766-C	Cover - Terminal (115v)
	35768-C	Cover - Terminal (230v)
41	66223-C	Heat Exchanger
42	40572-C	Tailpipe
43	40575-C	Strainer Assy - Basin
44	50074-C	Gasket - Tailpipe
45	26664-C	Basin - Stainless Steel
46	70208-C	Screw - Basin Mtg.
47	31513-C	Cold Control
48	62220-C	Evaporator Assembly
49	70788-C	Y - Strainer (Ref. Fig. 2 on Page 2)
50	70772-C	Drain Plug
51	27093-C	Angle - Bracket Corner
52	27094-C	Bracket - Front Support
53	27096-C	Bracket - Basin Mounting
54	27097-C	Frame - Back/Bottom

1. Projector: If mineral deposits build up in the orifices, they can be removed by using a round file or small diameter v. CAUTION: Care must be taken not to damage the orifices.
2. Stream Regulator: To adjust stream height see Instruction No. 11 under "START UP" Section on Page 3.
3. Temperature Control: Factory set for 50°F. water ( $\pm 5^\circ$ ) under normal conditions. For colder water, adjust screw on Item No. 47 (see below). CAUTION: Do not force screw against stops. Turn clockwise for colder water, counterclockwise for warmer.
4. Ventilation: Condenser fins (Item No. 31) should be periodically cleaned with a brush, air hose or vacuum cleaner.
5. Lubrication: Motors are lifetime lubricated.
6. CAUTION: Cleaning of Golden Bronzitone Models requires special care. Outer surfaces must be cleaned with a mild detergent or mixture of vinegar and water only, rinsed and wiped dry. Abrasive and acidic cleaners may eventually damage the Golden Bronzitone finish.



\* REPLACE WITH SAME COMPRESSOR USED IN ORIGINAL ASSEMBLY.  
 NOTE: All correspondence pertaining to Halsey Taylor water coolers or orders for repair parts MUST include Model No. and Serial No. of cooler, name and part number of replacement part.



# Halsey Taylor

2222 CAMDEN COURT  
 OAK BROOK, IL 60521  
 630.574.3500

PRINTED IN U. S. A.

FOR PARTS, CONTACT YOUR LOCAL DISTRIBUTOR OR CALL 1.800.323.0620