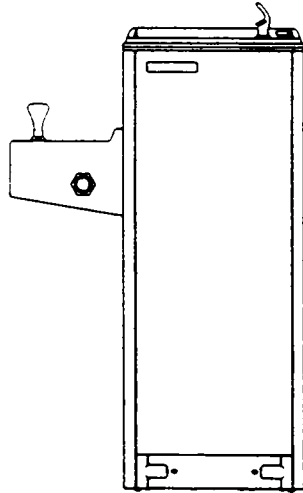


Halsey Taylor Owners Manual

SCWT14A-3-Q FL

(USES HFC 134A REFRIGERANT)

GLASS FILLER COMPATIBLE: See CAUTIONS in item 6 below.



Installer

The SCWT series coolers are among the easiest to install Floor Models on the market today. To assure you install this model easily and correctly, PLEASE READ THESE SIMPLE INSTRUCTIONS BEFORE STARTING THE INSTALLATION. CHECK YOUR INSTALLATION FOR COMPLIANCE WITH PLUMBING, ELECTRICAL AND OTHER APPLICABLE CODES. After installation, leave these instructions inside the cooler for future reference.

IMPORTANT

ALL SERVICE TO BE PERFORMED BY AN AUTHORIZED SERVICE PERSON

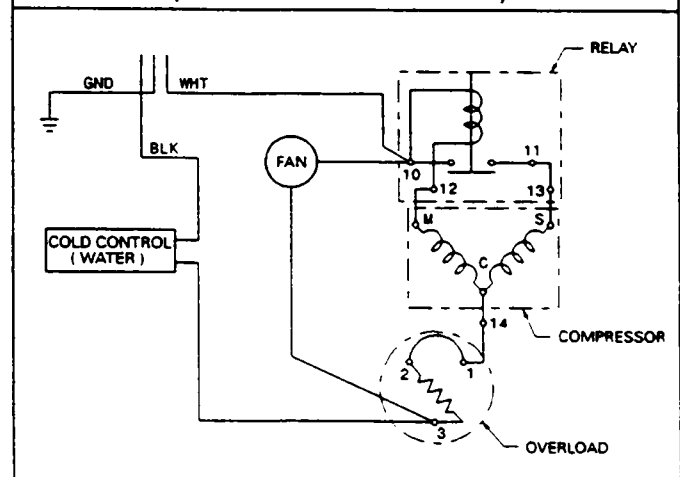
1. Insure proper ventilation by maintaining 4" (min.) clearance from cabinet louvers to wall on each side of cooler.
2. Water supply 3/8" IPS. Waste 1-1/4" IPS. Contractor to supply waste trap and service stop valve in accordance with local codes.
3. Connecting lines should be thoroughly flushed to remove all foreign matter before being connected to cooler. This cooler is manufactured in such a manner that it does not in any way cause taste, odor, color or sediment problems. If a taste, odor or sediment problem is prevalent, try installing our water filter module, Part No. 73-15242-51-550, on the supply line.
4. Electrical: Insure power supply is identical in voltage, cycle and phase to that specified on the cooler data plate. NEVER wire compressor directly to the power supply.
5. For TROUBLE SHOOTING AND MAINTENANCE GUIDE, see page 3.
6. Halsey Taylor has glass fillers and glass filler plumbing kits specifically designed for use in your water cooler. Check local listings for a Halsey Taylor dealer near you.

WARNING: Warranty is voided if:

- The plumbing kit or glass filler is not specified for use by Halsey Taylor for this particular model.
- Installation is not made in accordance with current Halsey Taylor instructions.

WIRING DIAGRAM

This drawing is merely for illustrating the components of the electrical system.



PUSH BUTTON & STREAM ADJUSTMENT

COOLER

SIDE FOUNTAIN

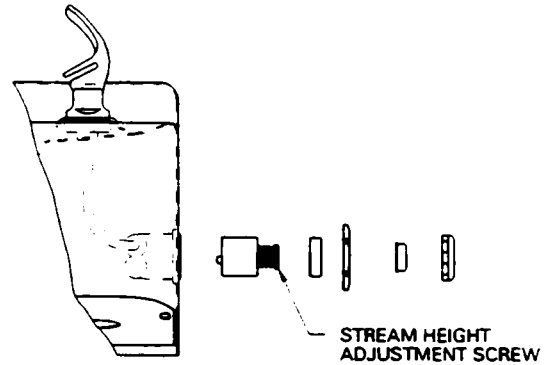
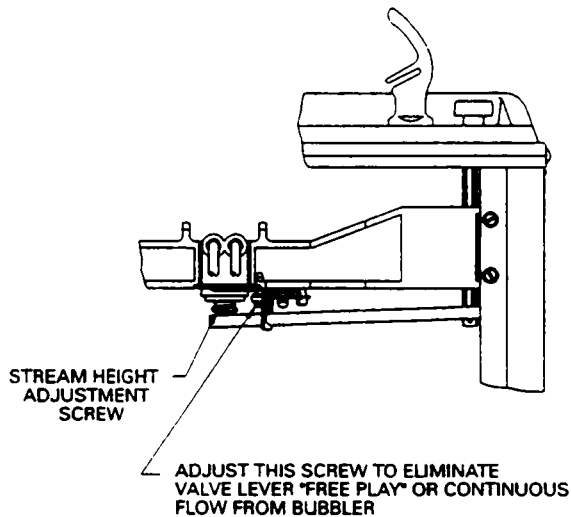


FIG. 4

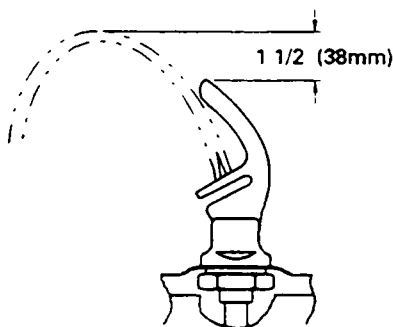
- 7) Install fountain drain line into connecting waste line while placing fountain on hanger bracket. Secure bottom of fountain to cooler using the supplied bolts. Connect the cold water supply line from the cooler to the quick connect fitting on fountain. (See Fig.3)

START UP

- 8). Turn on the building water supply and check all connections for leaks.
- 9). Depress push button until all air is bled from cooler water system. A steady stream flow assures all air is removed.
- 10). Stream height is factory set at 35 PSI. If supply pressure varies greatly from this, readjust stream height to approximately 1-1/2" above the bubbler guard by turning adjustment screw on regulator. (See push button & stream adjustment - Figure 4).
- 11). Recheck all water and drain connections with water flowing through system.
- 12). Plug cooler power cord into building electrical receptacle.
- 13). Replace the front panel and secure by replacing the two (2) screws . Then replace the toe plate and its two (2) screws and tighten securely.

TROUBLE SHOOTING & MAINTENANCE

1. **Bubbler:** If mineral deposits build up in the orifice, they can be removed by using a round file or small diameter wire.
CAUTION: Care must be taken not to damage the orifice.
2. **Stream Regulator:** To adjust stream height see Instruction No. 10 under "START UP"
3. **Temperature Control:** Factory set for 50°F water ($\pm 5^\circ$) under normal conditions. For colder water, adjust screw on Item No. 7 (see page 4).
CAUTION: Do not force screw against stops. Turn clockwise for colder water, counterclockwise for warmer water.
4. **Ventilation:** Condenser fins and louvers should be periodically cleaned with a brush, air hose or vacuum cleaner.
5. **Lubrication:** Motors are lifetime lubricated.
6. **CAUTION:** Cleaning of Golden Bronzitone Models requires special care. Outer surfaces must be cleaned with a mild detergent or mixture of vinegar and water only, rinsed and wiped dry. Abrasive and acidic cleaners may eventually damage the Golden Bronzitone finish.



CORRECT STREAM HEIGHT

FIG. 5

ITEMIZED PARTS LIST

ITEM NO.	PART NO.	DESCRIPTION
1	51544C	Bubbler
2	10-26399-31-640	Drain Plug
3	16-02705-08-640	Strainer Plate
4	17-14037-42-590	Basin (Cooler)
5	17-26136-42-830	Basin (Fountain)
6	66327C	Evaporator
7	35839C	Cold Control
8*	35762C	Compressor Serv. Pak
9	31027C	Overload/Relay Assy
10	19-42439-01-550	Electrical Shield
11	35766C	Relay Cover
12	45678C	Precooler
13	66252C	Condenser
14	10-15434-31-640	Cap Push Button
15	10-15075-31-550	Push Button Stem
16	31490C	Fan Motor
17	10-42095-43-730	Fan Blade
18	70018C	Fan Blade Nut
19	40-26720-43-730	Fan Motor Bracket
20	66202C	Drier
21	66245C	Heat Exchanger
22	19-26684-51-550	Power Cord
23	10031C	Regulator Retaining Nut
24	26860C	Regulator Lever
25	26861C	Pivot Bracket
26	26862C	Regulator Retaining Bracket
27	50985C	Regulator Holder
28	61313C	Regulator (Fountain)
29	61314C	Regulator (Cooler)
30	70788C	Y-strainer
31	55880C	Regulator Bracket
32	70745C	Union 3/8 x 1/4
33	40-14443-43-730	Hanger Bracket
34	40-09505-43-730	Cover Plate
35	55884C	Drain Elbow
36	66345C	Waste Tube
37	60-15020-51-550	Drain Assy
38	See Color Table	Side Panel - Right
39	See Color Table	Side Panel - Left
40	55885C	Nut 1-1/4 Slip Joint
41	55913C	Adaptor-Drain
42	40048C	Button
43	40089C	Cover Nut
44	40169C	Hex Nut
45	70683C	Union 1/4
NS	See Color Table	Front Panel

*REPLACE WITH SAME COMPRESSOR USED IN ORIGINAL ASSEMBLY.
 NOTE: All correspondence pertaining to HALSEY TAYLOR water coolers or orders for repair parts MUST include Model No. and Serial No. of cooler, name, and part number of replacement part.

COLOR	RIGHT PANEL	LEFT PANEL	FRONT PANEL
Platinum (PV)	401536248410	401536348410	401507448410
Almond (AV)	26912C	26908C	26904C
Slate (SV)	401536248440	401536348440	401507448440
Swiss Std (SS)	401536242830	401536342830	401507442830

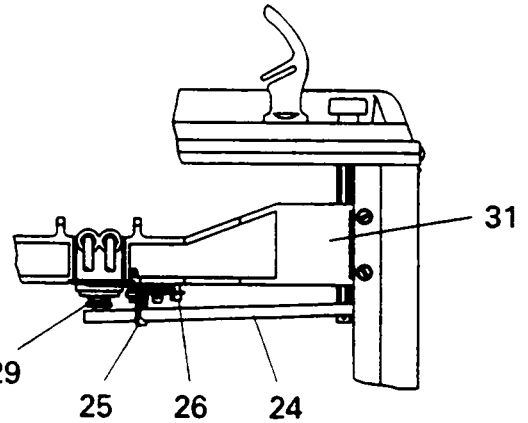
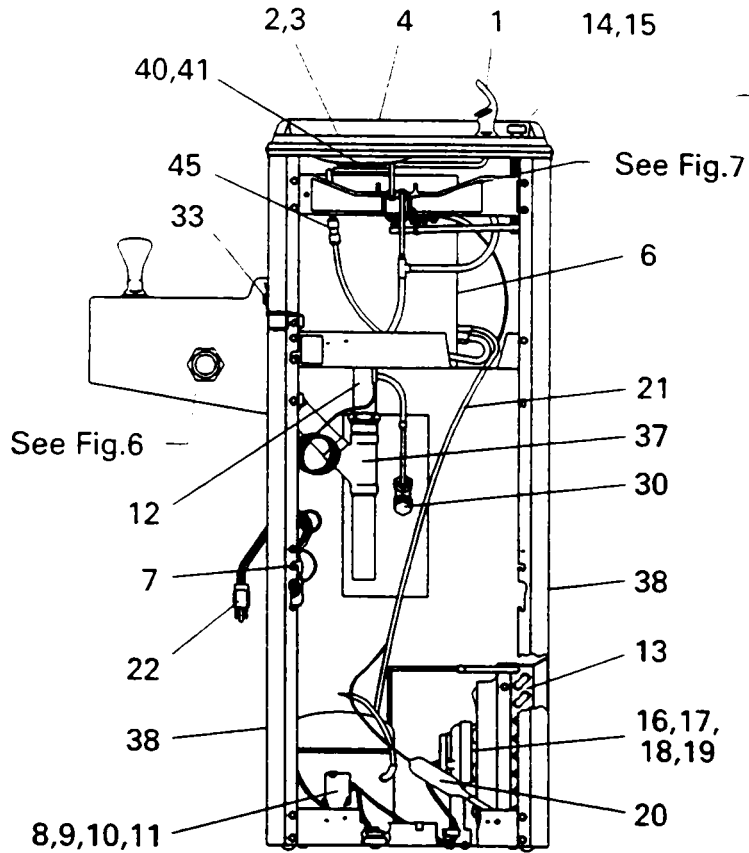


Fig. 7

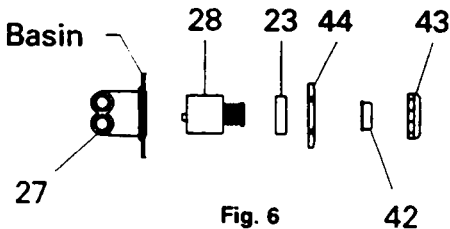
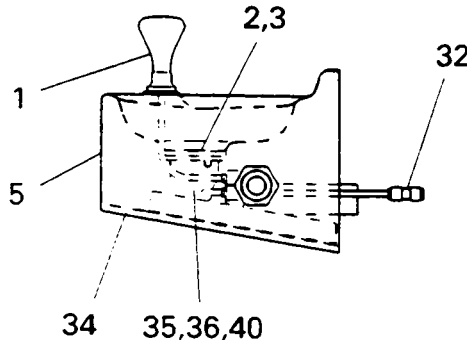


Fig. 6



Halsey Taylor

P. O. BOX 9001
 OAK BROOK, IL 60521
 (708) 574-3500

PRINTED IN U.S.A.

FOR PARTS, CONTACT YOUR LOCAL DISTRIBUTOR OR CALL 1-800-323-0620