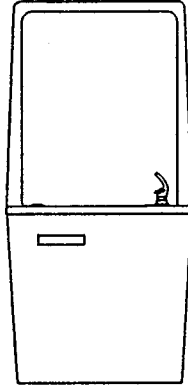


# Halsey Taylor Owners Manual

RWM8A-2-Q RWM12A-2-Q

(USES HFC 134A REFRIGERANT)

GLASS FILLER COMPATIBLE: See CAUTIONS in item 6 below.



## Installer

The RWM series coolers are among the easiest to install Wall Mount Models on the market today. To assure you install this model easily and correctly, PLEASE READ THESE SIMPLE INSTRUCTIONS BEFORE STARTING THE INSTALLATION. CHECK YOUR INSTALLATION FOR COMPLIANCE WITH PLUMBING, ELECTRICAL AND OTHER APPLICABLE CODES. After installation, leave these instructions inside the cooler for future reference.

## IMPORTANT

ALL SERVICE TO BE PERFORMED BY AN AUTHORIZED SERVICE PERSON

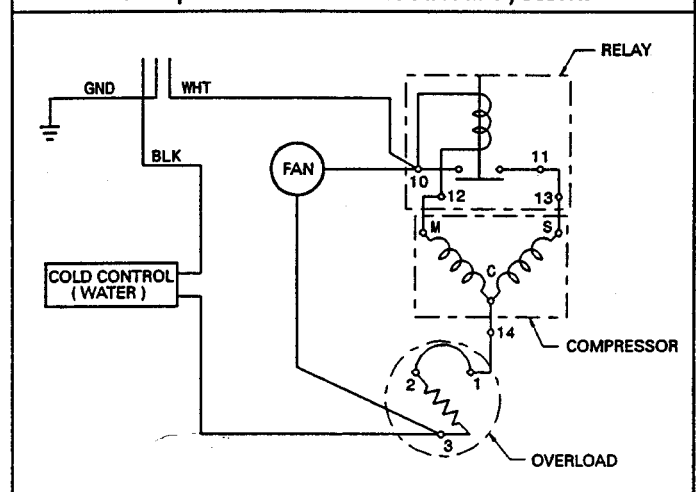
1. Insure proper ventilation by maintaining 4" (min.) clearance from cabinet louvers to wall on each side of cooler.
2. Water supply 3/8" IPS. Waste 1-1/4" IPS. Contractor to supply waste trap and service stop valve in accordance with local codes.
3. Connecting lines should be thoroughly flushed to remove all foreign matter before being connected to cooler. This cooler is manufactured in such a manner that it does not in any way cause taste, odor, color or sediment problems. If a taste, odor or sediment problem is prevalent, try installing our water filter module, Part No. 73-15242-51-550, on the supply line.
4. Electrical: Insure power supply is identical in voltage, cycle and phase to that specified on the cooler data plate. NEVER wire compressor directly to the power supply.
5. For TROUBLE SHOOTING AND MAINTENANCE GUIDE, see page 4.
6. Halsey Taylor has glass fillers and glass filler plumbing kits specifically designed for use in your water cooler. Check local listings for a Halsey Taylor dealer near you.

**WARNING:** Warranty is voided if:

- The plumbing kit or glass filler is not specified for use by Halsey Taylor for this particular model.
- Installation is not made in accordance with current Halsey Taylor instructions.

## WIRING DIAGRAM

This drawing is merely for illustrating the components of the electrical system.



96674-C  
(REV. A)

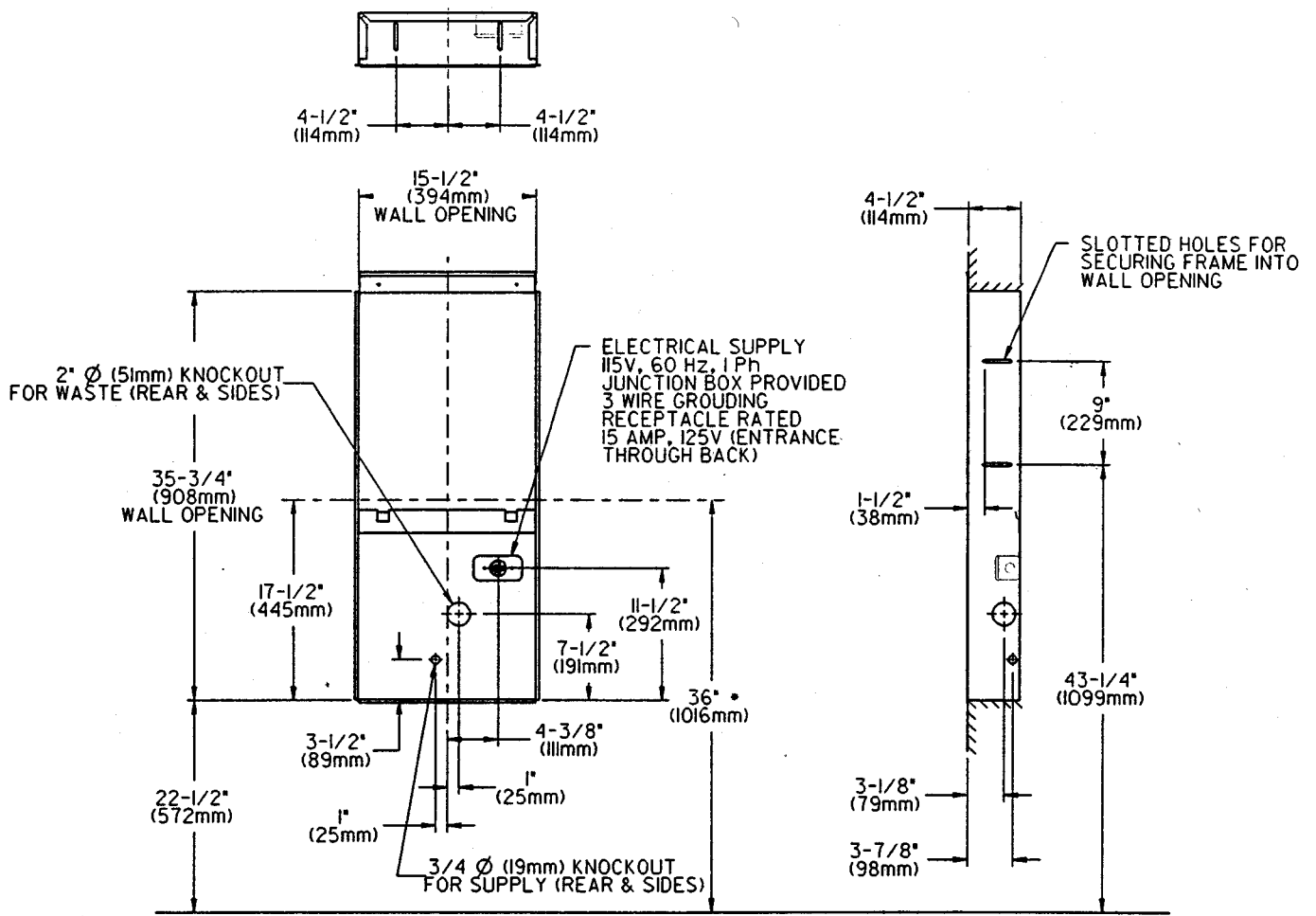


FIG. 1

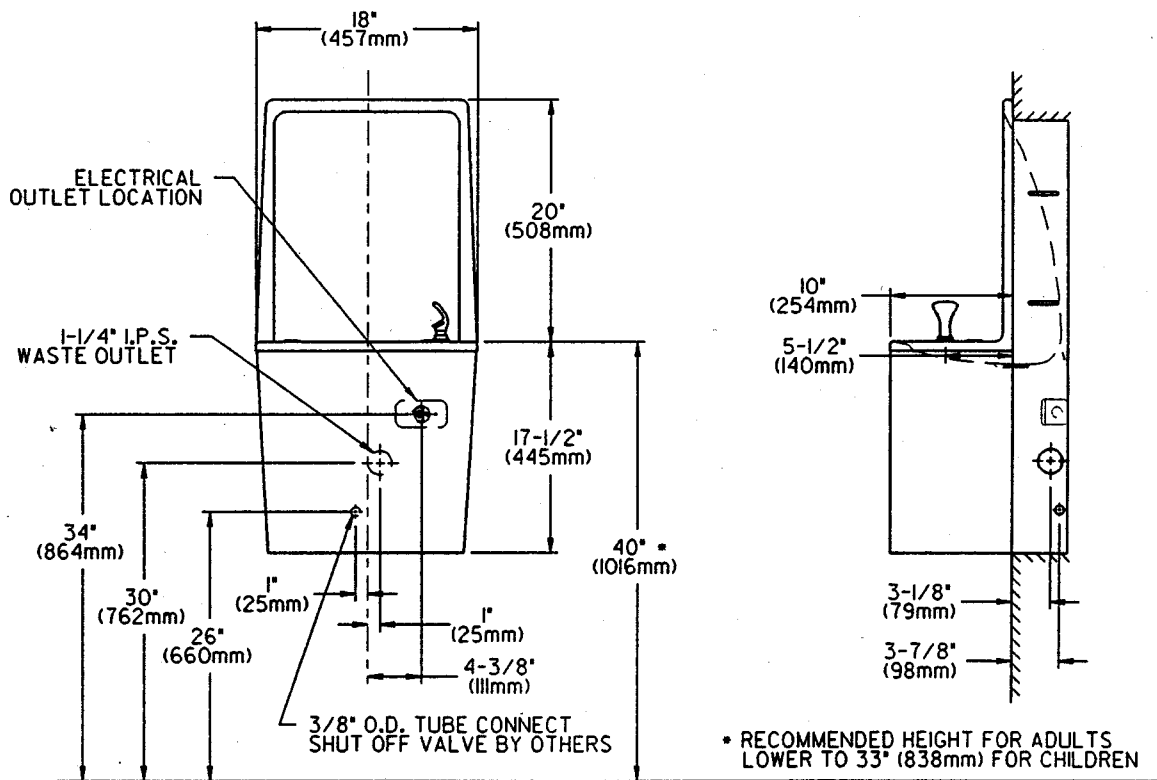


FIG. 2

### IMPORTANT:

- 3 1/8 in. dimension from back of unit to centerline of trap must be maintained for proper fit.
- Anchor frame securely to wall using all six (6) slotted mounting holes.

### INSTALLATION OF COOLER

- 1) Mounting Frame **MUST** be supported securely. Add fixture support carrier if wall will not provide adequate support.
- 2) Install 3/8" IPS. female x 3/8" compression straight service stop to building water inlet stub. (service stop not furnished)
- 3) Hang the cooler on the hanger bracket. Be certain the hanger bracket is engaged properly in the slots on the cooler back.
- 4) Remove the two (2) screws at the bottom of the front panel and set aside. Remove the front panel and set aside.
- 5) Remove the slip nut and gasket from trap and install them on the cooler waste line making sure that the end of the waste line fits into the trap. Assemble the slip nut and gasket to the trap and tighten securely.
- 6) Connect cooler to building supply line with a shut-off valve and install a 3/8" O.D. water line between the valve and the cooler.
- 7) Connect 3/8" O.D. tubing directly to the service stop as shown in Fig. 3.

### START UP

- 8) Turn on the building water supply and check all connections for leaks.
- 9) Depress push button until all air is bled from cooler water system. A steady stream flow assures all air is removed.
- 10) Stream height is factory set at 35 PSI. If supply pressure varies greatly from this, re-adjust stream height to approximately 1-1/2" above the bubbler guard by turning adjustment screw on regulator. (See push button valve adjustment - Figure 4).
- 11) Recheck all water and drain connections with water flowing through system.
- 12) Plug cooler power cord into building electrical receptacle.
- 13) Replace the front panel and secure by replacing the two (2) screws in the bottom of the front panel and tighten securely.

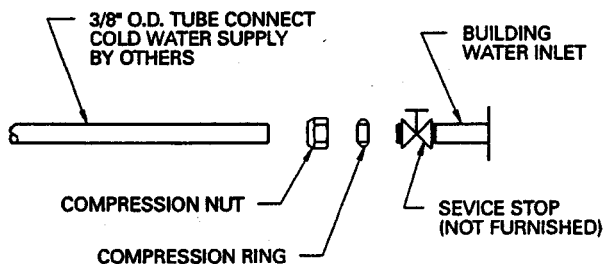
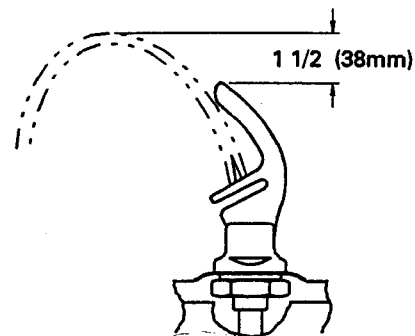


FIG. 3



CORRECT STREAM HEIGHT

FIG. 4

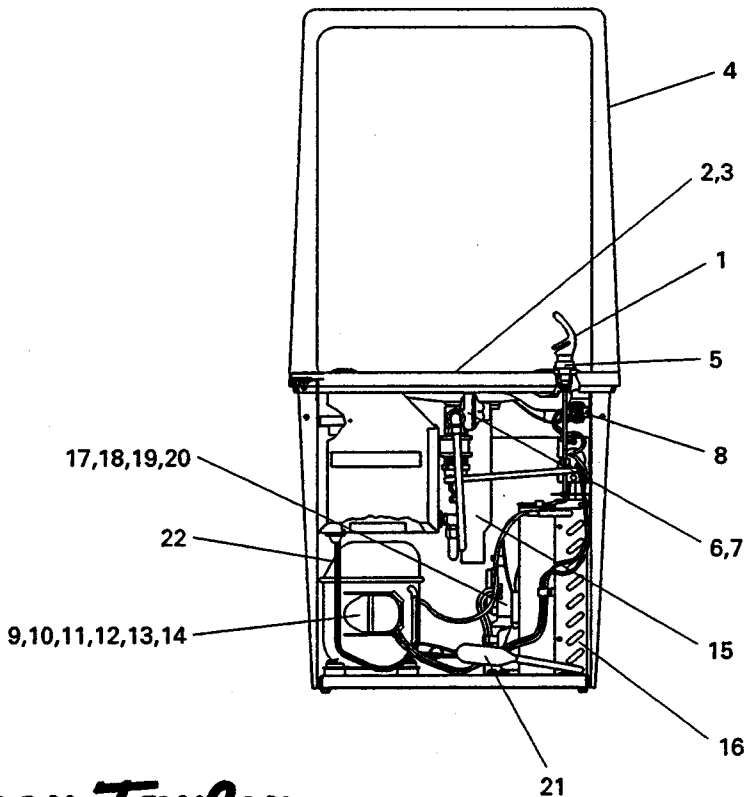
ITEMIZED PARTS LIST

ITEM NO.	PART NO.	DESCRIPTION
1	10-14228-31-640 10-14228-31-450	Bubbler Bubbler - Bronzestone
2	10-26399-31-640 10-26399-31-450	Drain Plug Drain Plug - Bronzestone
3	16-02705-08-640 41-02705-08-450	Strainer Plate Strainer Plate - Bronzestone
4	17-14820-42-830 41-14820-42-450	Receptor Receptor - Bronzestone
5	10-07559-42-590 41-07559-42-450	Push Button Stem Push Button Stem - Bronzestone
6	40593C 40592C	Valve Assy (8 GPH) Valve Assy (12 GPH)
7	60-14202-51-550	Stem Assy
8	31513C	Cold Control
9*	35794C	Compressor
10	30180C	Overload Spring
11	30181C	Cover - Terminal
12	30182C	Bale Strap
13	35795C	Overload
14	35801C	Relay
15	60-14904-51-550	Waste Tube Assy (8 GPH)
	40598C	Precooler (12 GPH)
16	66305C	Condenser
17	31490C	Fan Motor
18	30277C	Fan Blade
19	70018C	Fan Blade Nut
20	26685C	Fan Motor Bracket
21	66202C	Drier
22	66328C	Heat Exchanger
NOT SHOWN	35825C	Power Cord
NOT SHOWN	66329C	Evaporator

TROUBLE SHOOTING & MAINTENANCE

- Bubbler:** If mineral deposits build up in the orifice, they can be removed by using a round file or small diameter wire.  
**CAUTION:** Care must be taken not to damage the orifice.
- Stream Regulator:** To adjust stream height see Instruction No. 10 under "START UP"
- Temperature Control:** Factory set for 50°F water ( $\pm 5^\circ$ ) under normal conditions. For colder water, adjust screw on Item No. 8.  
**CAUTION:** Do not force screw against stops. Turn clockwise for colder water, counterclockwise for warmer water.
- Ventilation:** Condenser fins and louvers should be periodically cleaned with a brush, air hose or vacuum cleaner.
- Lubrication:** Motors are lifetime lubricated.
- CAUTION:** Cleaning of Golden Bronzestone Models requires special care. Outer surfaces must be cleaned with a mild detergent or mixture of vinegar and water only, rinsed and wiped dry. Abrasive and acidic cleaners may eventually damage the Golden Bronzestone finish.

\*REPLACE WITH SAME COMPRESSOR USED IN ORIGINAL ASSEMBLY.  
NOTE: All correspondence pertaining to HALSEY TAYLOR water coolers or orders for repair parts MUST include Model No. and Serial No. of cooler, name, and part number of replacement part.



**Halsey Taylor**®

P. O. BOX 9001  
OAK BROOK, IL 60521  
(708) 574-3500

PRINTED IN U.S.A.

FOR PARTS, CONTACT YOUR LOCAL DISTRIBUTOR OR CALL 1-800-323-0620