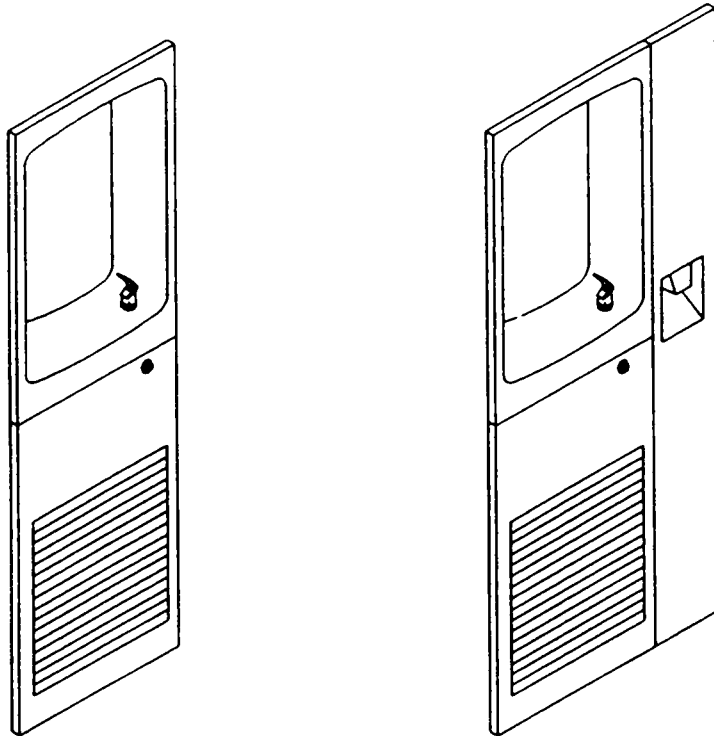


Halsey Taylor Owners Manual

Model: RC8-A3, RC12-A3, RC8-A3GF, RC12-A3GF
& 14762 Cup Dispenser
Fully Recessed Water Cooler



Installer

To assure you install this model easily and correctly,
**PLEASE READ THESE SIMPLE INSTRUCTIONS BEFORE STARTING THE
INSTALLATION. CHECK YOUR INSTALLATION FOR COMPLIANCE WITH
PLUMBING, ELECTRICAL AND OTHER APPLICABLE CODES.** After install-
ation, leave these instructions inside the cooler for future reference.

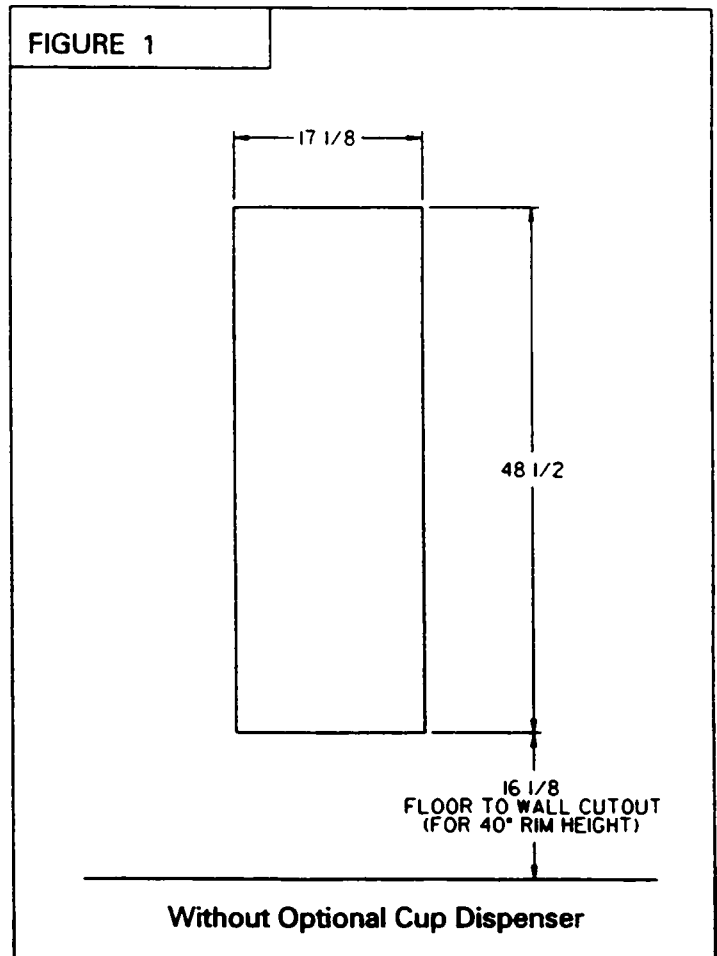
- NOTE: 1. All service to be performed by authorized service person.
2. The Golden Bronzitone Models require special care. see page 11
for instructions
3. Please refer to your installation option as follows

RC Model Drinking Fountains	Page 7 & 8
RC Model with Glass Filler Option	Page 9 & 10
RC Cup Dispenser Option	Page 4
Itemized Parts List	Page 11

WALL FRAME INSTALLATION INSTRUCTIONS

FOR THE
RC MODEL DRINKING FOUNTAIN
(W/O OPTIONAL CUP DISPENSER)

1. Cut a wall opening $17\frac{1}{8}$ ' W x $48\frac{1}{2}$ ' H. The bottom edge of the opening should be about $16\frac{1}{8}$ ' above the floor. (See Figure 1)
(Check local codes for height requirement).
2. After opening is completed, reinforce opening on all sides so that it may adequately support water cooler which weighs up to 150 lbs. and also provides a means of securing Wall Frame in place. NOTE: Building construction must allow for adequate air flow on both sides and top of chiller unit. 4" min. required.
3. Install rough plumbing. See Figure 2 for location of supply water inlet to chiller and location of waste water outlet.
4. Cut plastic ties holding chiller shelf support rods to framework.
5. Install wall frame assembly in wall opening with front edge of frame flush with finished wall face. Secure frame through holes in top & sides to wall support members with $\frac{5}{16}$ " diameter fasteners (bolts or lag screws) as required by wall construction. (14) bolts/screws required. CAUTION: DO NOT USE LESS THAN REQUIRED QUANTITY AND SIZE (DIAMETER) OF FASTENERS.
6. Install chiller shelf as shown in Figure 3. Place shelf on lower frame member and attach support rods. Secure front edge of the shelf to frame & wall construction using two $\frac{5}{16}$ " diameter lag screws or bolts. Tighten securely.
7. Install electrical conduit rough-in. Figure 2 shows electrical conduit connection location.



STOP
YOU ARE NOW READY TO INSTALL FOUNTAINS...

* NOTE If wall opening height has been adjusted to meet local codes (see Step No. 1 of installation instructions), height dimensions must be adjusted accordingly.

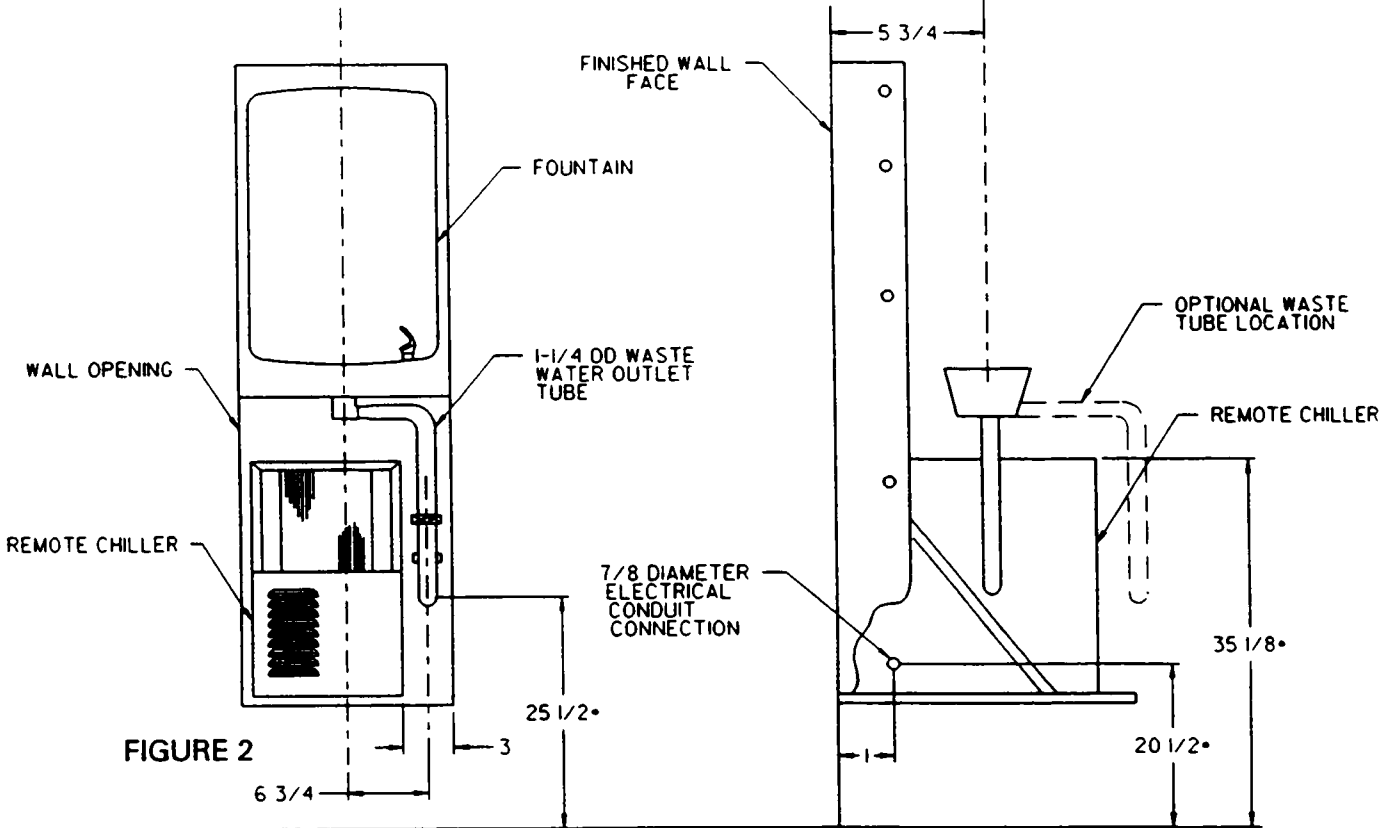
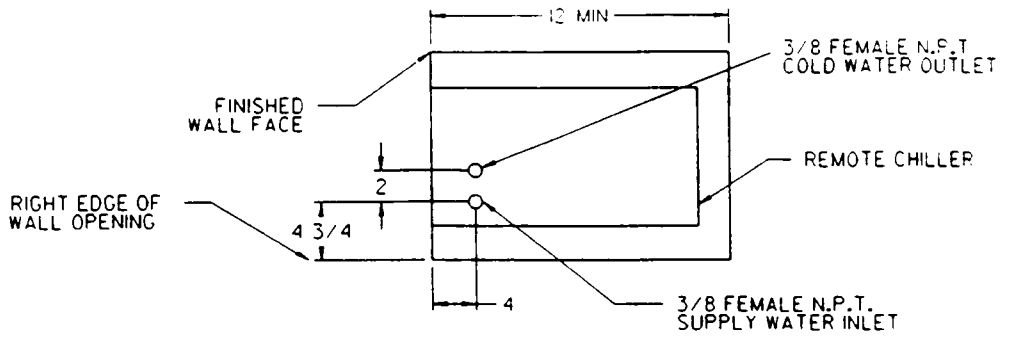


FIGURE 2

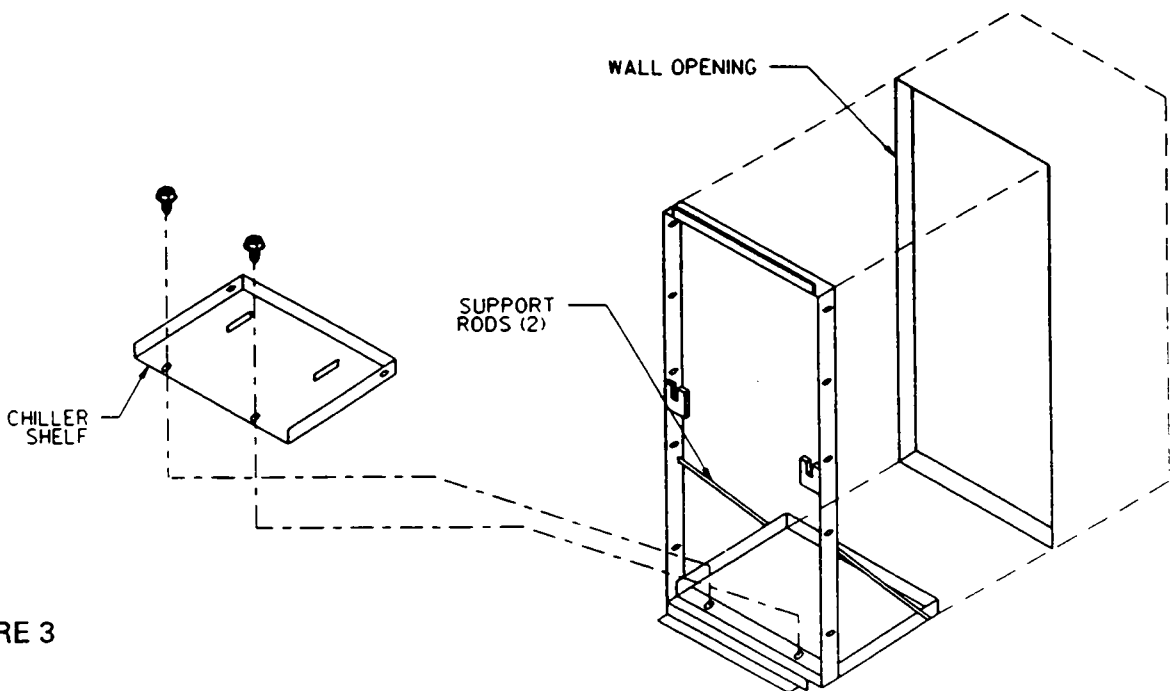


FIGURE 3

RC WALL FRAME INSTALLATION INSTRUCTIONS

FOR THE RC MODEL DRINKING FOUNTAIN (WITH OPTIONAL CUP DISPENSER)

1. Cut a wall opening $24 \frac{7}{8}$ W x $48 \frac{1}{2}$ H. The bottom edge of the opening should be about $16 \frac{1}{8}$ " above the floor (See Figure 4). (Check local codes for height requirement).

2. After opening is completed, reinforce opening on all sides so that it may adequately support watercooler which weighs up to 150 lbs. and also provides a means of securing Wall Frame in place. Install a wall stud where indicated on Figure 4. NOTE: Building construction must allow for adequate airflow on both sides and top of chiller unit. 4" minimum required.

3. Install rough plumbing to fountain. See Figure 5 for location of supply water inlet to chiller and location of waste water outlet.

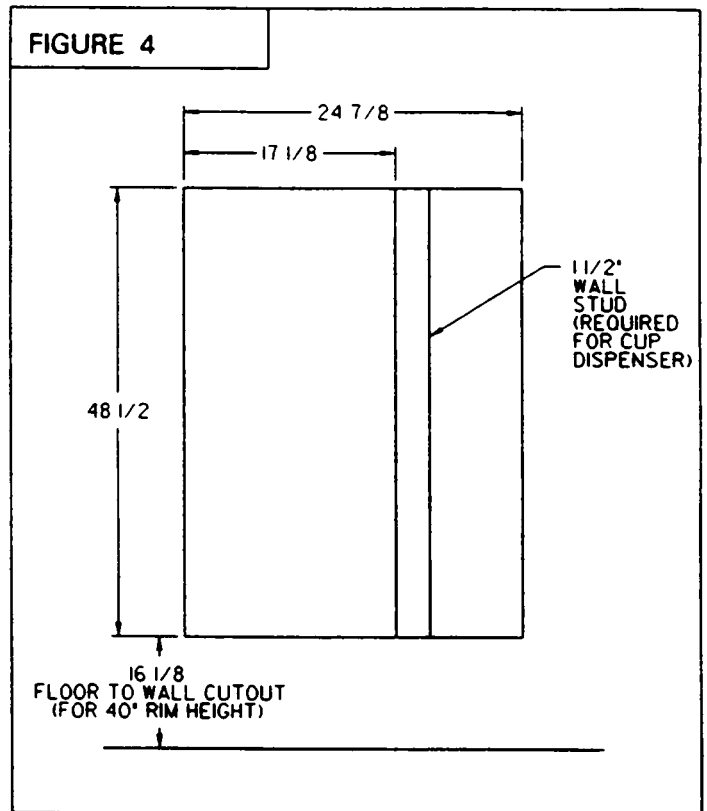
* For cup dispenser model without glass filler plumbing, continue with Step No. 5.

4. Install rough plumbing to cup dispenser. See Figure 12 for location of waste water outlet.

5. Install wall frame assembly in wall opening with front edge of frame flush with finished wall face. Secure frame to wall support members with $\frac{5}{16}$ diameter fasteners (bolts or lag screws) as required by wall construction. (14) bolts/screws required. CAUTION: Do not use less than required quantity and size (diameter) of fasteners.

6. Install chiller shelf. As shown in Figure 3 (page 3), place shelf on lower frame member and attach support rods. Secure front edge of the shelf to frame and wall construction using two (2) $\frac{5}{16}$ " diameter lag screws or bolts. Tighten securely.

7. Install electrical conduit rough-in. Figure 5 shows electrical conduit connection location.

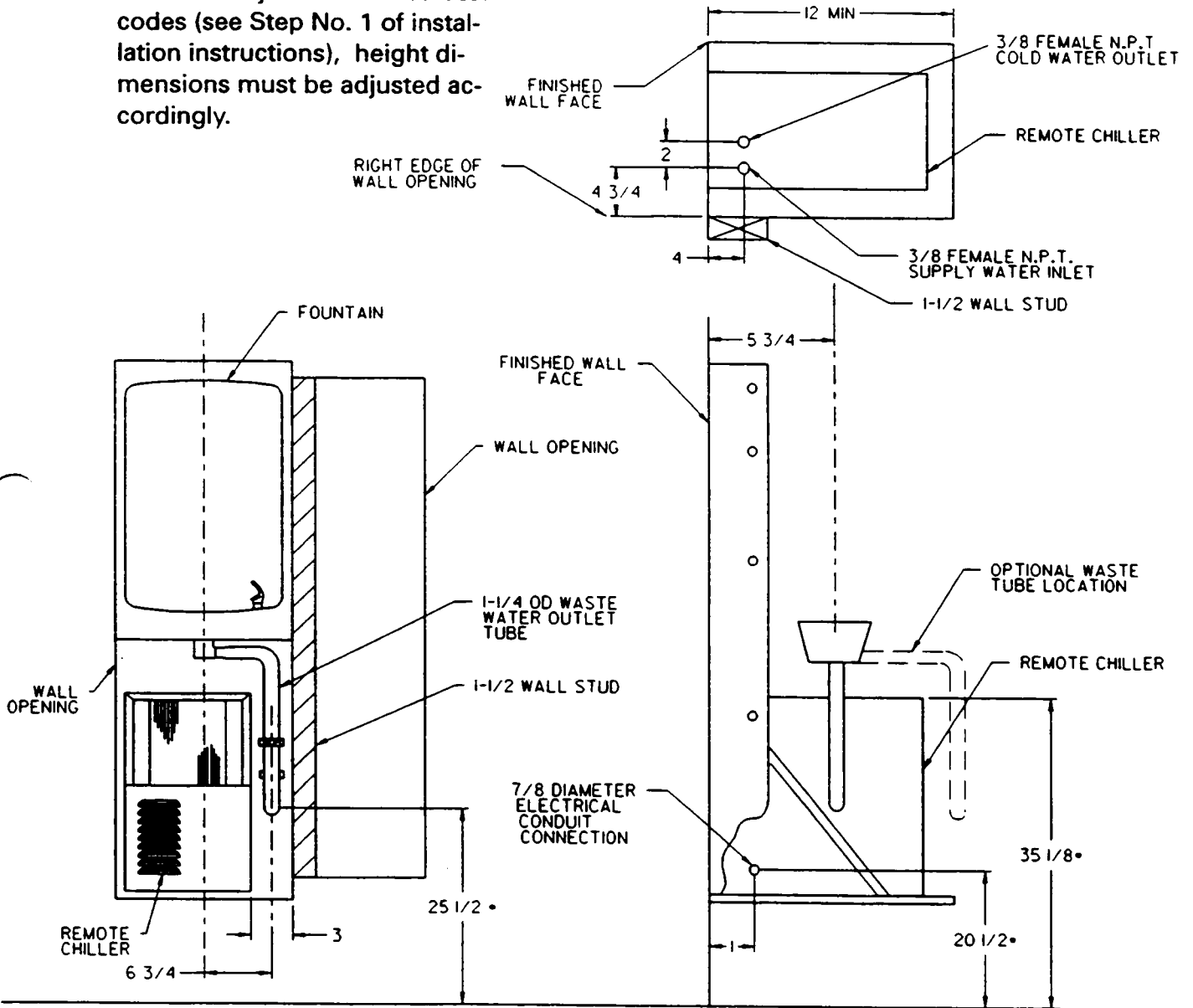


STOP

YOU ARE NOW READY TO INSTALL FOUNTAINS...

**FIGURE 5
PLUMBING ROUGH-INS
(EXCLUDING CUP DISPENSER)**

*** NOTE** If wall opening height has been adjusted to meet local codes (see Step No. 1 of installation instructions), height dimensions must be adjusted accordingly.



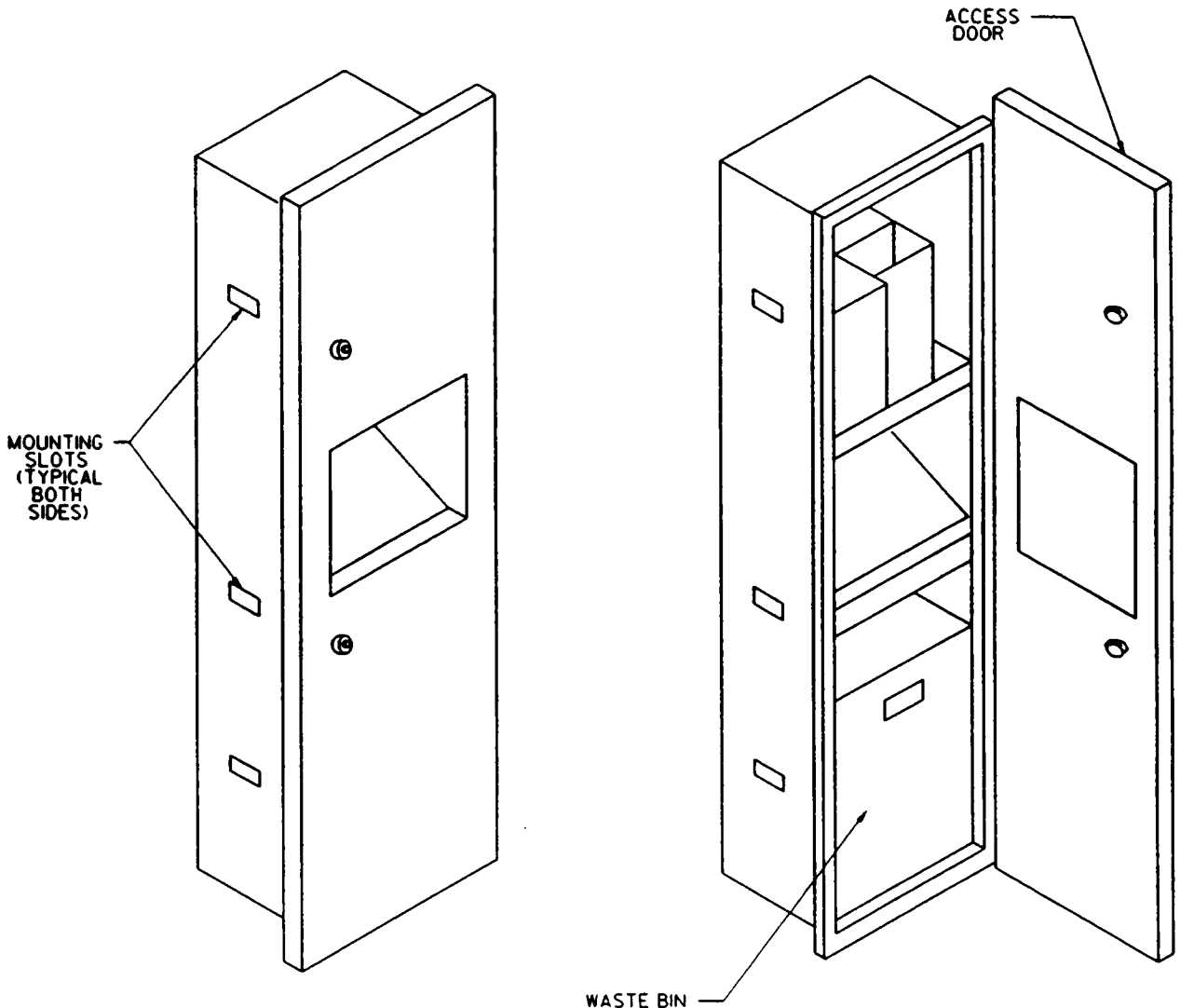
INSTALLATION INSTRUCTIONS

FOR THE
RC CUP DISPENSER OPTION
MODELS: 14762

1. Open door of cup dispenser and remove waste bin.
2. Shim along the bottom and side of cup dispenser as required to obtain a good alignment with previously installed drinking fountain. Be sure to check for proper operation of access door before securing unit in place.

Securing can be done through slots provided using screws or bolts (as required by wall construction).

3. Replace waste bin.



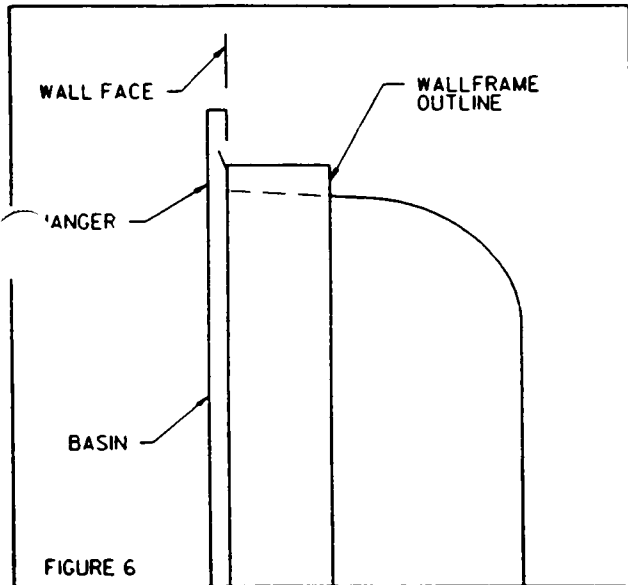
INSTALLATION INSTRUCTIONS

FOR THE RC MODEL DRINKING FOUNTAIN

(refrigerated and non-refrigerated)

MODELS: RC8-A3, RC12-A3

1. Familiarize yourself with the RC Wallframe which should already be in place in the wall. If not, refer to the "RC Wallframe" Installation Instructions before proceeding.
2. Determine location of rough plumbing. At this point, you should decide which style trap you plan to use. For easier installation, we recommend the use of swivel trap.
3. Install the basin (see figure 6). Hold the basin flush against the wall, positioning the top edge just above the upper edge of the wallframe. Then slide the basin down slowly until it engages the hanger bracket. Be sure the basin is firmly engaged before releasing it.



4. Finish securing basin in place. Align the brackets at the bottom of the basin with the brackets on the frame. Fasten the brackets together using screws and speednuts (provided with fountain).
5. Install tailpiece assembly. Slide the slip nut and gasket from the trap onto the tailpiece. Insert tailpiece assembly into the trap and align its other end with the drain hole in the basin. Place rubber gasket between the tailpiece assembly and the basin, then screw in the drain plug from above. Tighten the drain plug. Tighten slip nut and swivel joint. Snap the strainer plate into the drain plug.

6. Install a service stop (not provided) on the supply water inlet line. Turn on supply water and flush thoroughly.

7. Install refrigeration unit. Slide refrigeration unit into the wallframe and position tight against left side and flush with the front edge of wallframe.

WARNING: Adequate space must be maintained behind the refrigeration unit for air circulation.

8. Water supply connection (see Figure 7)

A. RC8A Models - Connect service stop to tube marked "Water Inlet" on remote chiller. Make connection from chiller "Cold Water Outlet" tube to regulator valve assembly using the provided elbow and Y-strainer. (Figure 7a.)

B. RC12A Models - Connect service stop to pre-cooler/tailpiece assembly inlet tube. Connect pre-cooler/tailpiece assembly outlet tube to tube marked "Water Inlet" on remote chiller. Make connection from chiller "Cold Water Outlet" tube to regulator valve assembly using the provided elbow and Y-strainer. (Figure 7b.)

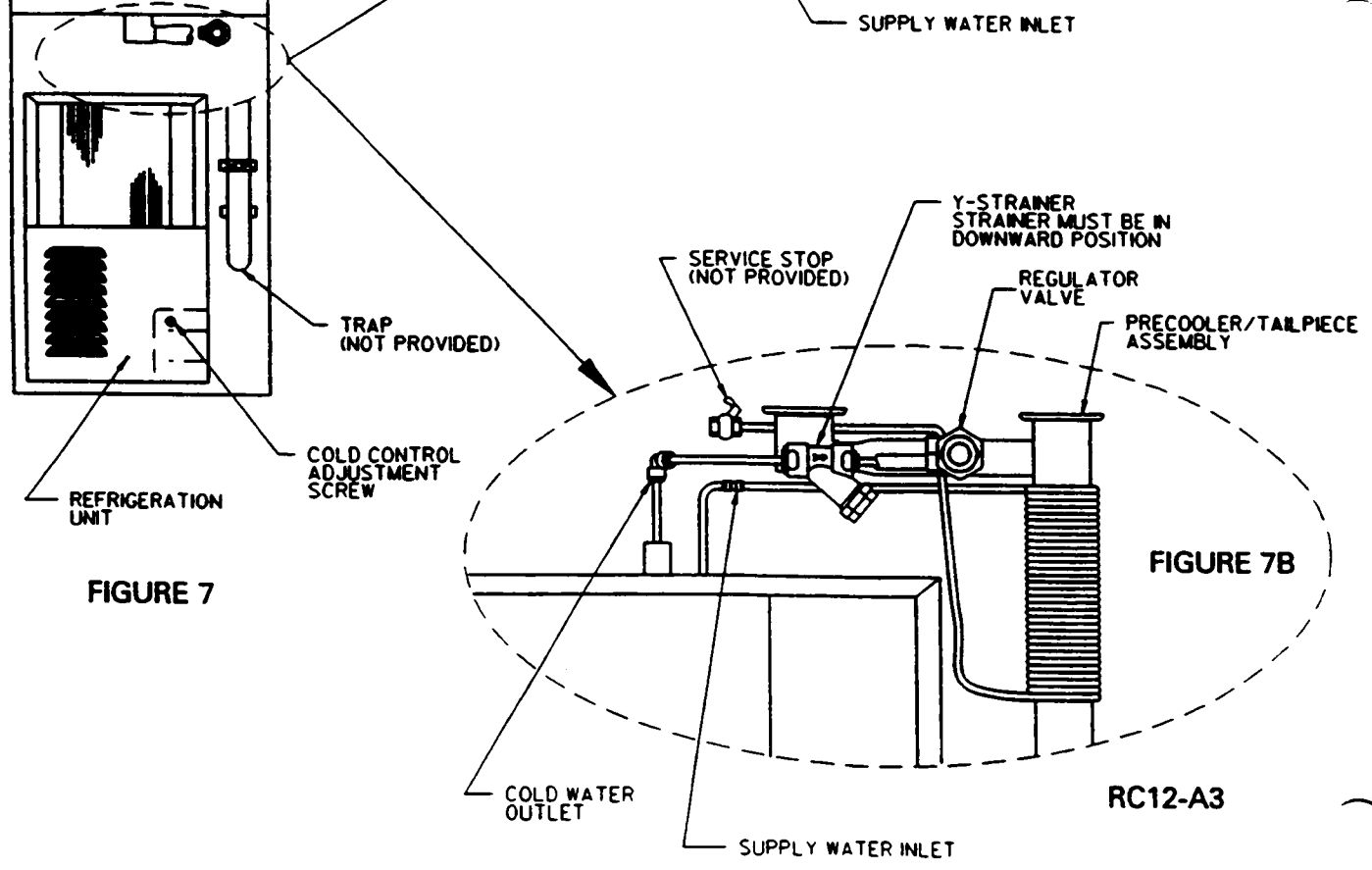
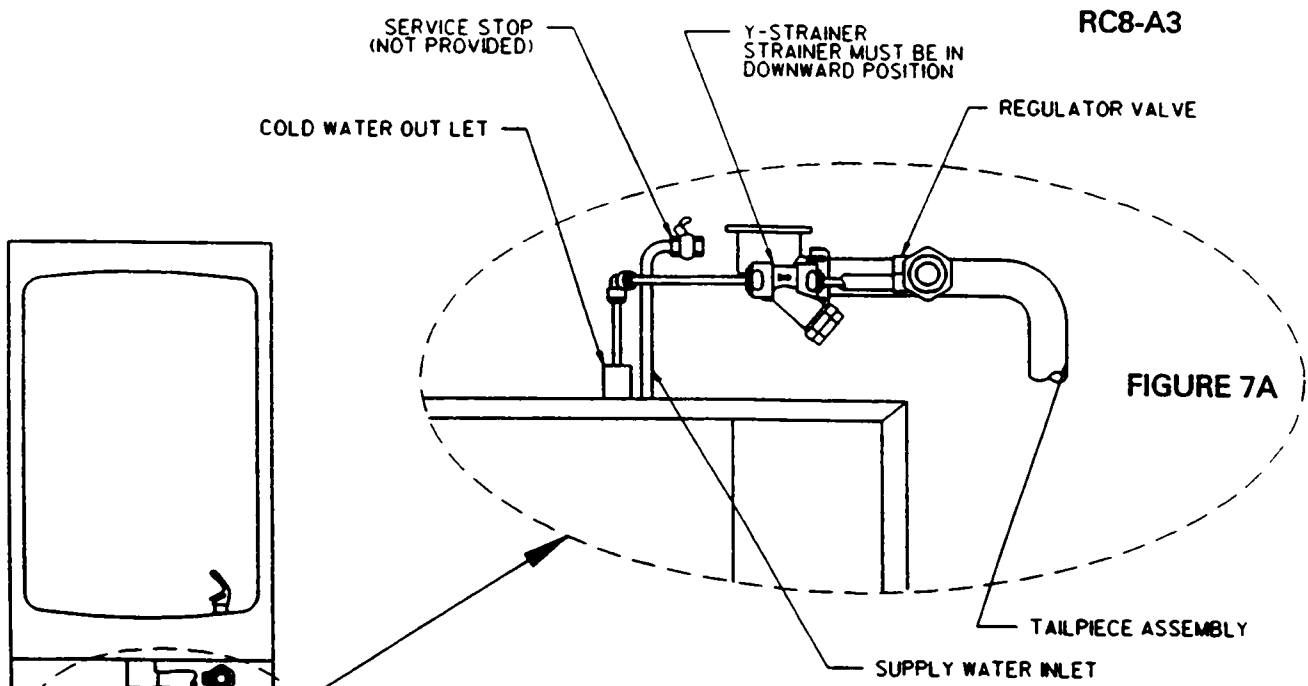
9. Open service stop and operate push button to purge air. Check thoroughly for leaks.

10. Check stream height from bubbler. Stream height is factory set at 45 - 50 PSI. If supply pressure varies greatly from this, remove items 17 & 18 and adjust screw on regulator (Item 14). Clockwise adjustment will raise stream height and CCW adjustment will lower stream height. For best adjustment, stream height should be approximately 1-1/2" (38 mm) above the bubbler guard. (see Figure 14 on page 15).

11. Connect refrigeration unit to electrical supply and check for proper operation.

WARNING: Adequate space must be maintained behind the refrigeration unit for air circulation.

12. Attach regulator holder (Item 13) to front panel (Item 3) with hex nut (Item 16). Hold panel and engage angle on top edge of panel with lower edge of basin. Swing bottom of panel into place against the wall and secure using panel mounting screws (provided).



INSTALLATION INSTRUCTIONS

RC MODEL DRINKING FOUNTAIN WITH GLASS FILLER OPTION

(refrigerated and non-refrigerated)

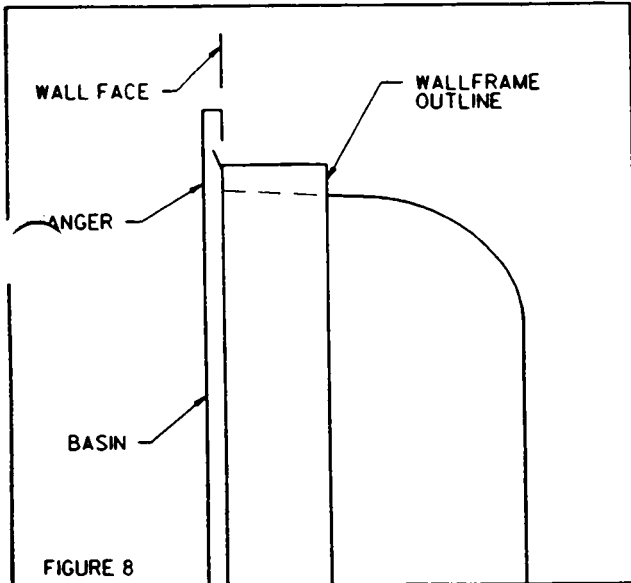
MODELS: RC8-A3GF, RC12-A3GF

1. Familiarize yourself with the RC Wallframe which should already be in place in the wall. If not, refer to the "RC Wallframe" Installation Instructions before proceeding.

2. Determine location of rough plumbing. At this point, you should decide which style trap you plan to use. For easier installation, we recommend the use of a swivel trap.

3. Install the basin (see Figure 8). Hold the basin flush against the wall, positioning the top edge just above the upper edge of the wallframe. Then slide the basin down slowly until it engages the hanger bracket. Be sure the Basin is firmly engaged before releasing it.

4. Finish securing basin in place. Align the brackets at the bottom of the basin with the brackets on the wall-



frame. Fasten the brackets together using screws and speednuts (provided with fountain).

5. Install tailpiece assembly. Slide the slip nut and gasket from the trap onto the tailpiece. Insert tailpiece assembly into the trap and align its other end with the drain hole in the Basin. Place rubber gasket between the tailpiece assembly and the basin, then screw in the drain plug from above. Tighten the drain plug. Tighten slip nut and swivel joint. Snap the strainer plate into the drain plug.

6. Install a service stop (not provided) on the supply water inlet line. Turn on supply water and flush thoroughly.

7. Install refrigeration unit. Slide refrigeration unit into the wallframe and position tight against left side and flush with the front edge of wallframe.

WARNING: Adequate space must be maintained behind the refrigeration unit for air circulation.

8. Water supply connection (see Figure 9)

A. RC8A Models - Connect service stop to tube marked "Water Inlet" on remote chiller. Make connection from chiller "Cold Water Outlet" tube to regulator valve assembly using the provided elbow, tee and Y-strainer. (Figure 9a)

B. RC12A Models - Connect service stop to pre-cooler/tailpiece assembly inlet tube. Connect pre-cooler/tailpiece assembly outlet tube to tube marked "Water Inlet" on remote chiller. Make connection from chiller "Cold Water Outlet" tube to regulator valve assembly using the provided elbow, tee and Y-strainer. (Figure 9b.)

9. Connect glass filler line to outlet on tee located between Y-strainer and regulator valve assembly. (see Figure 6)

10. Open service stop and operate push button to purge air. Check thoroughly for leaks.

11. Check stream height from bubbler. Stream height is factory set at 45 - 50 PSI. If supply pressure varies greatly from this, remove items 17 & 18 and adjust screw on regulator (Item 14). Clockwise adjustment will raise stream height and CCW adjustment will lower stream height. For best adjustment, stream height should be approximately 1-1/2" (38 mm) above the bubbler guard. (see Figure 14 on page 15).

12. Connect refrigeration unit to electrical supply and check for proper operation.

WARNING: Adequate space must be maintained behind the refrigeration unit for air circulation.

13. Attach regulator holder (Item 13) to front panel (Item 3) with hex nut (Item 16). Hold panel and engage angle on top edge of panel with lower edge of basin. Swing bottom of panel into place against the wall and secure using panel mounting screws (provided).

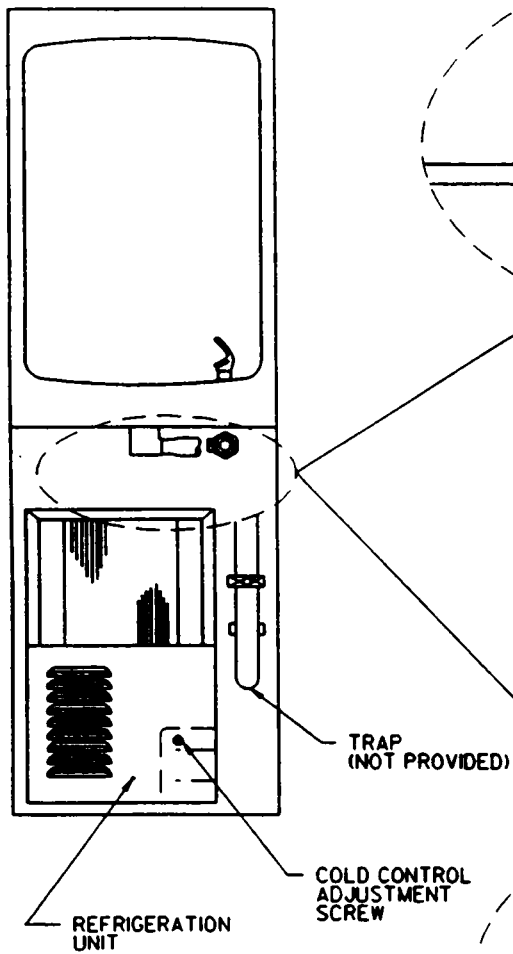
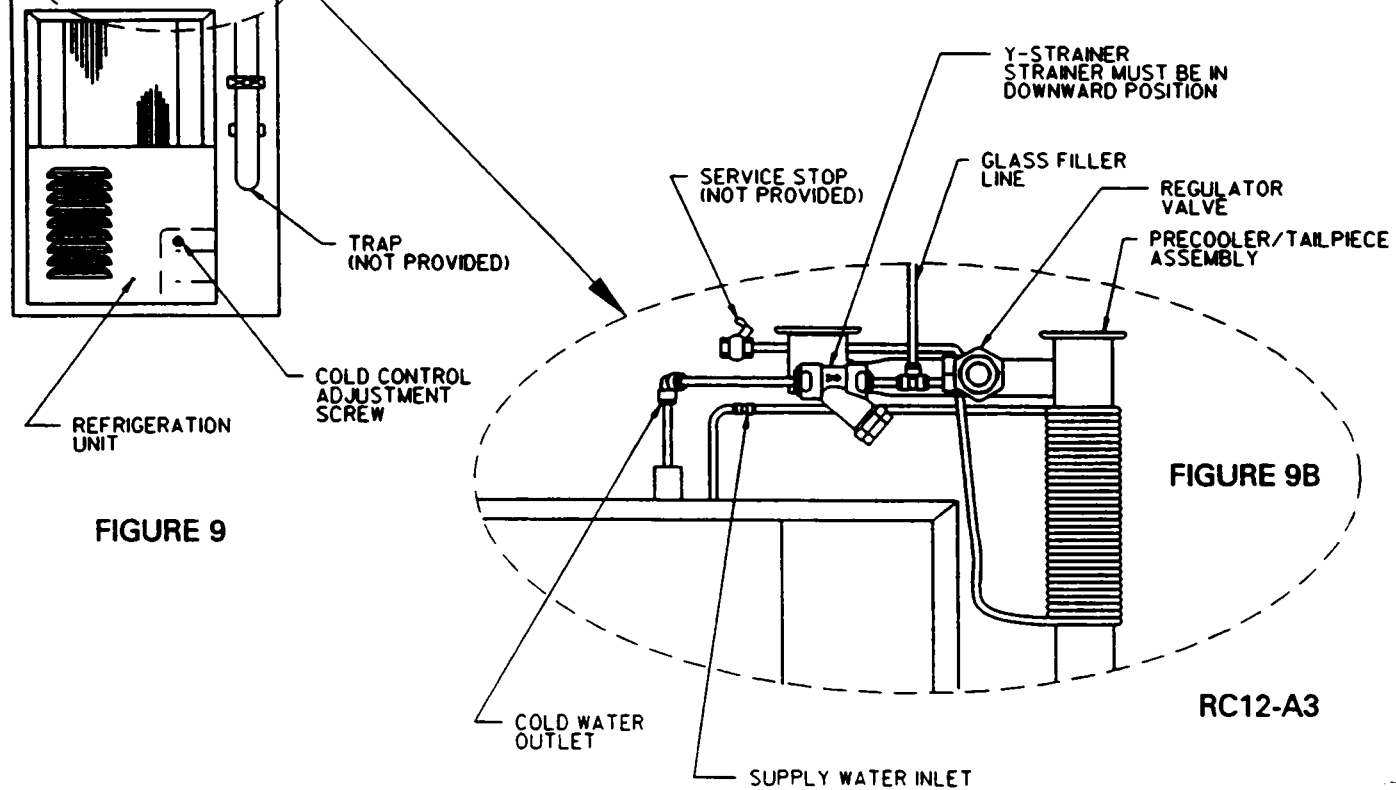
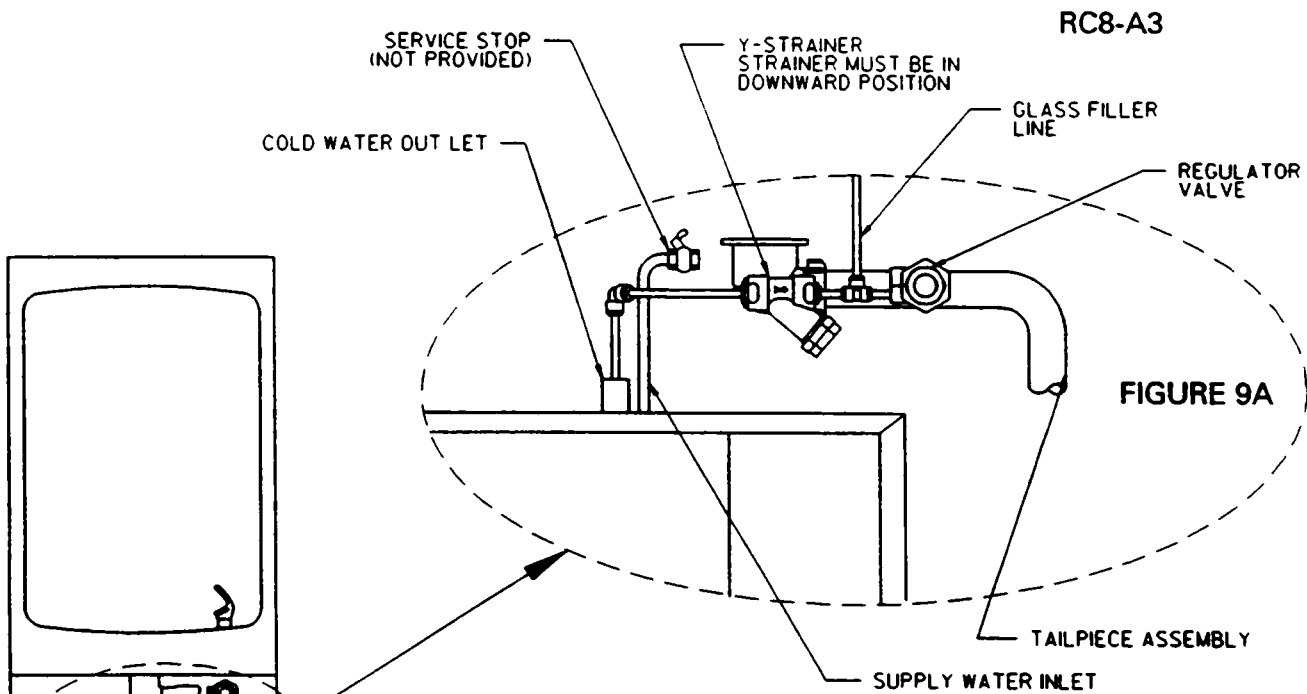
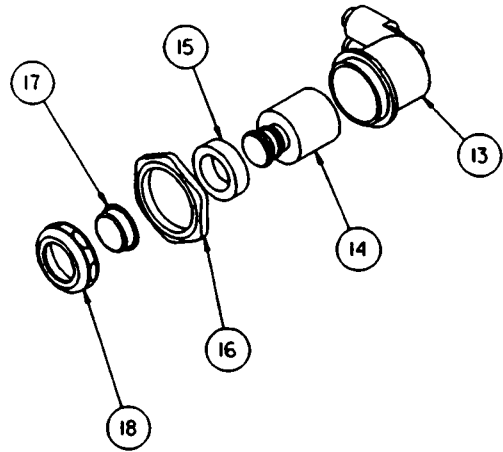
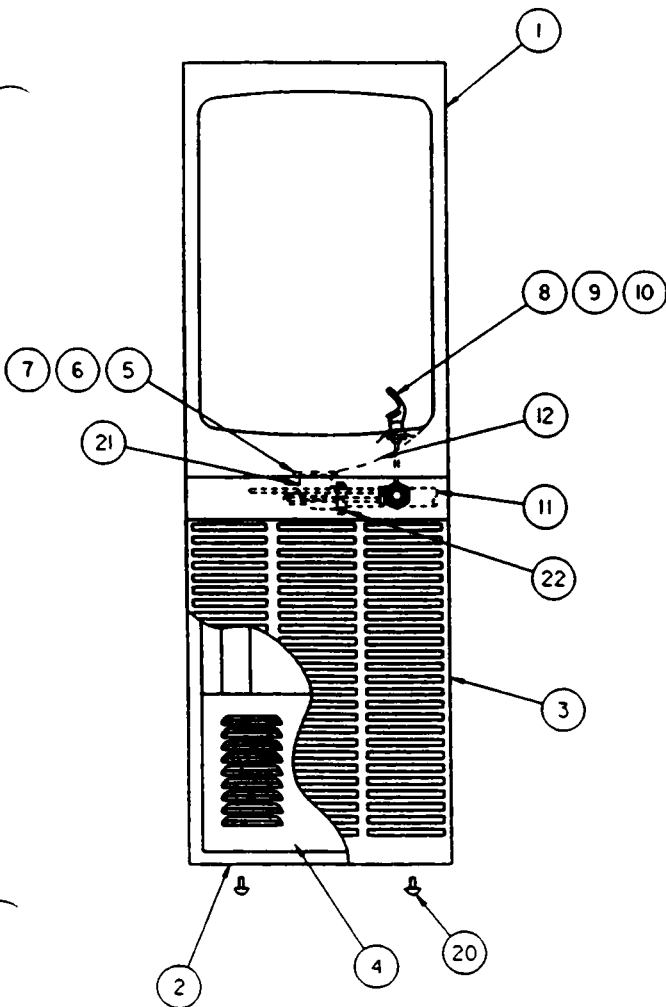


FIGURE 9

FIGURE 9B

M	PART NO.	DESCRIPTION
1	170857042830 410857042450	Basin - Stainless Steel Basin - Golden Bronzestone
2	732660951550	Mounting Frame
3	23040C 23041C	Grille - Stainless Steel Grille - Golden Bronzestone
4	REFERENCE	Remote Chiller Assembly
5	100147140560	Gasket
6	160270508640 410270508450	Strainer Plate - Chrome Strainer Plate - Golden Bronzestone
7	102639931920 102639931450	Drain Plug Drain Plug - Golden Bronzestone
8	51546C 51545C	Bubbler - Chrome Bubbler - Golden Bronzestone
9	100322740560	Gasket - Bubbler (2 Req'd)
10	10080C	Nipple - Bubbler

ITEM	PART NO.	DESCRIPTION
11	66347C 601562951550	Tube - Waste - RC8 Waste Line/Precooler Ass'y, - RC12
12	74050011	Sound Dead Pad
13	50985C	Holder - Regulator
14	61313C	Regulator
15	10031C	Retaining Nut
16	40169C 40170C	Hex Nut - Chrome Hex Nut - Golden Bronzestone
17	40048C 40065C	Button - Chrome Button - Golden Bronzestone
18	40089C 40119C	Cover Nut - Chrome Cover Nut - Golden Bronzestone
19	70788C	Y-Strainer
20	1110166	Screw - #8 x 3/4 Type AB
21	55884C	Elbow - Drain - RC8
22	55885C	Nut - 1 1/4 Slip Joint - RC8



CAUTION

Cleaning of Golden Bronzestone Models requires special care. Outer surfaces must be cleaned with mild detergent or mixture of vinegar and water only, rinsed and wiped dry. Abrasive and acidic cleaners may eventually damage the Golden Bronzestone.

INSTALLATION INSTRUCTIONS

FOR THE RC MODEL DRINKING FOUNTAIN (WITH OPTIONAL CUP DISPENSER)

1. The 14700 Model Cup Dispenser with Glass filler is designed to complement model RC-A3 drinking fountains. The fountain should already be installed before beginning installation, if not, refer to front for page number of instructions for your model. Remove louvered access panel from fountain via the two screws at the bottom.
2. Check wall opening to see if provisions have been made to accept this cup dispenser. If they have not, refer to page 4 for rough-in instructions. **CAUTION:** Wall construction must be framed to support fountain and cup dispenser (approximately 150 pounds).
3. See Parts List Illustration (page 13) for exact location of cup dispenser tailpiece. Decide which style of waste trap you intend to use. For easier installation, we recommend the use of a swivel trap.
4. Orientate yourself to the configuration of the cup dispenser. Open front door and remove the spring loaded trash access panel. To remove access panel, just loosen the four mounting screws and pull out the panel. Also remove the waste bin. Note location of mounting slots in the wall box portion of the cup dispenser. The slots are for affixing wall box to building construction.
5. Put cup dispenser in wall opening. Determine shimming required to obtain a good alignment with fountain. Open and close door to ensure proper operation. **CAUTION:** Do not "suspend" cup dispenser via the mounting slots - be sure to shim along bottom edge to bear the weight of the cup dispenser.
6. Secure cup dispenser in place. Use lag screws or bolts as required by wall construction.
7. Install glass filler supply tube assembly. (Figure 10). Put glass filler fitting through hole provided in back, put fibre washer on from the front and screw on the hexagonal mounting nut. Note that the tubing itself is flex-tubing which will enable you to hand-form as required for installation.
8. Install glass filler. First remove the blue handle, then screw the glass filler into the glass filler fitting. Reattach blue handle.
9. Turn off supply water to the RCA-3 drinking fountain. Disconnect supply tubing from fitting located at the push button valve assembly. Remove elbow from valve assembly and install tube tee (provided). Reconnect supply water tubing (see parts list illustration on page 13).
10. Connect glass filler supply tubing to tee.
11. Install tailpiece assembly (as shown in Figure 11). Connect waste trap (not provided).
12. Turn on supply water and operate push button valve and glass filler. Check entire system for leaks. Water flow from the glass filler can be adjusted by turning the flow adjusting screw (see Figure 10). In order to adjust, it may be necessary to remove, and then reinstall the glass filler, per step 8 above.
13. Replace the spring loaded trash access panel via the four mounting screws. Reinstall louvered access panel on the RCA-3 fountain.

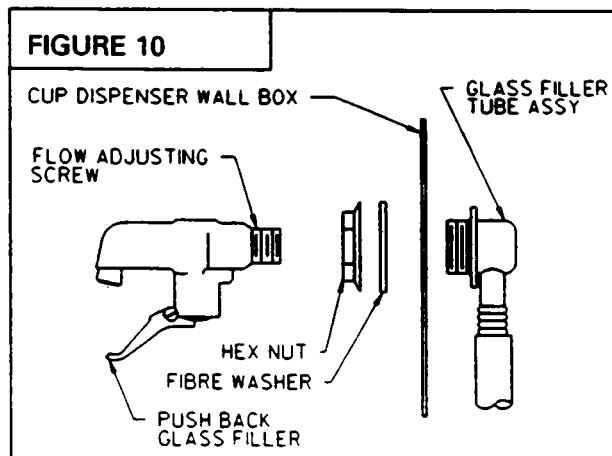
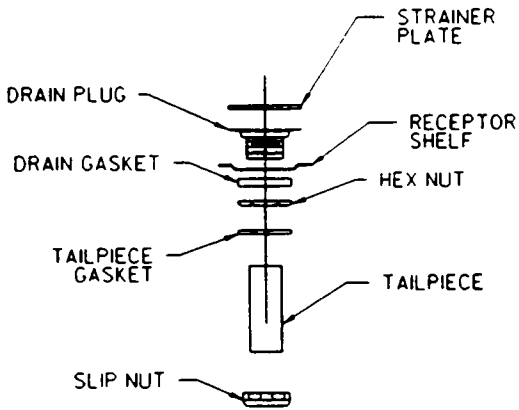


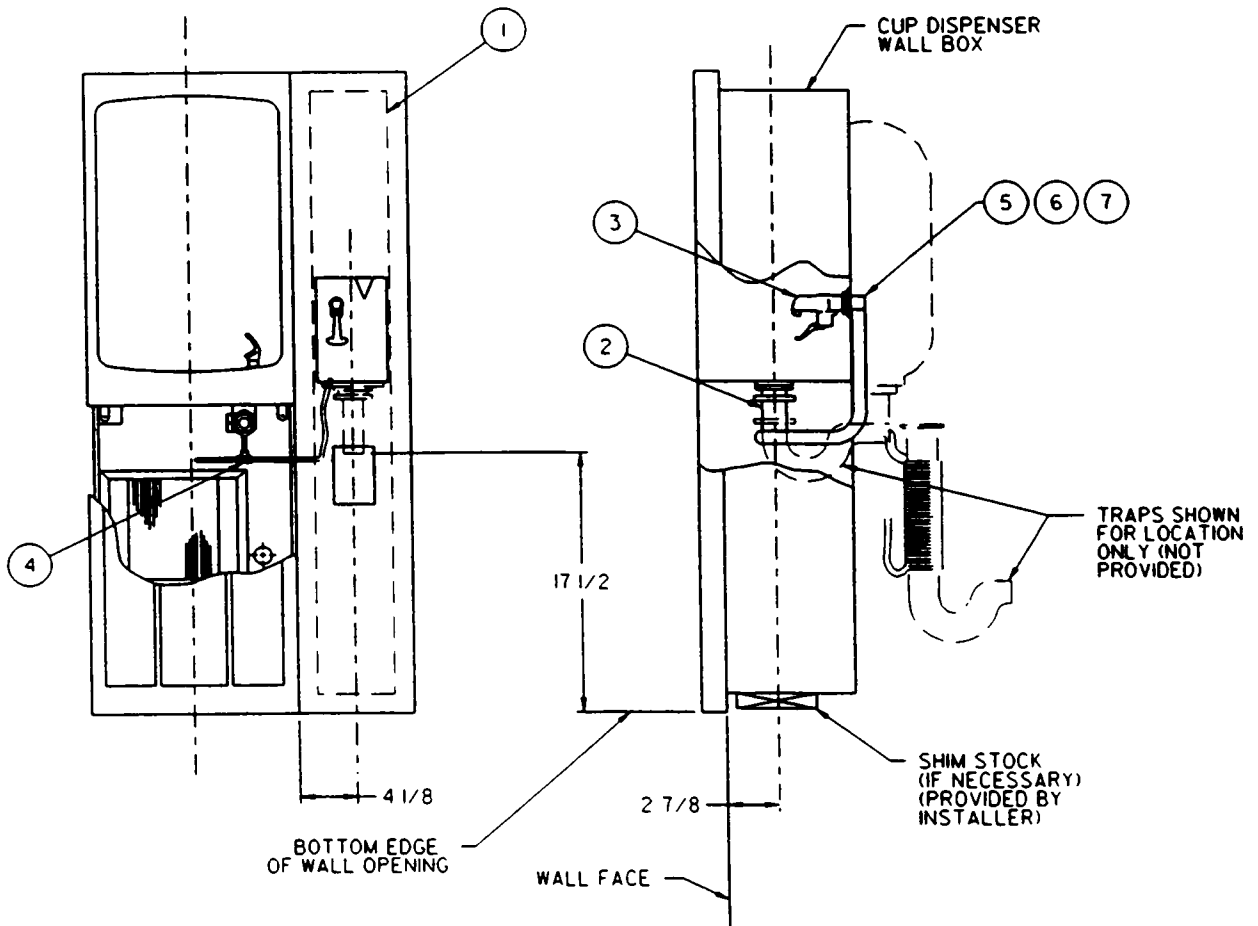
FIGURE 11



ITEM	PART NO.	QTY	DESCRIPTION
1	101470051830	1	Cup Dispenser/Glass Filler
2	621565651550	1	Drain Parts Pak
3	160807751640	1	Push Back Glass Filler
4	161563108550	1	Compression Tube Tee
5	601565851550	1	Glass Filler Tube Assembly
6	411564208650	1	Hex Nut
7	100115824740	1	Fibre Washer

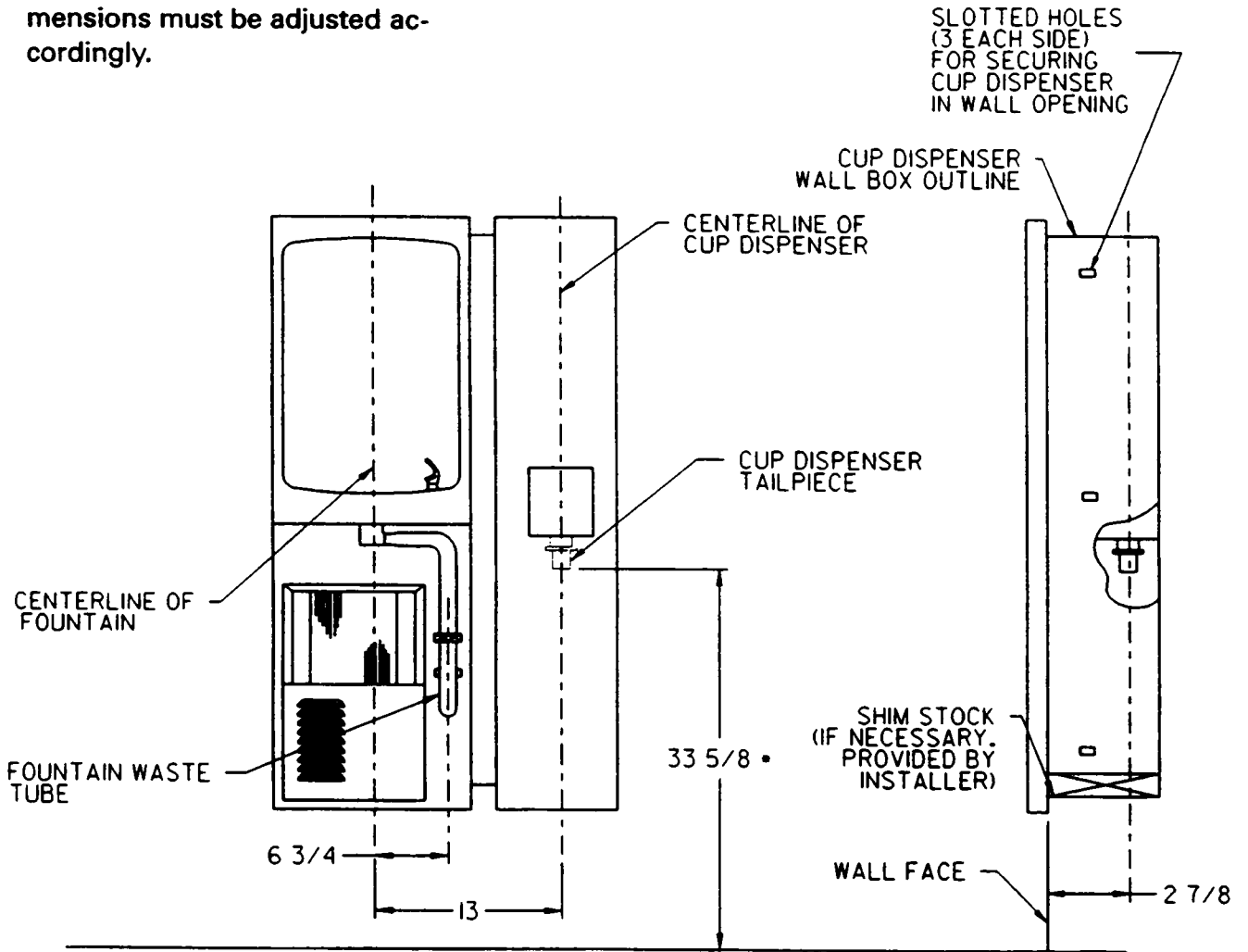
IMPORTANT: Fountain and glass filler are rated for a supply pressure of 90 PSI minimum. If supply pressure exceeds this, a pressure reducing regulator should be installed on the supply line. Minimum supply pressure - 15 PSI.

MODEL 14700 CUP DISPENSER WITH GLASS FILLER



**FIGURE 12
CUP DISPENSER WITH
GLASS FILLER**

*** NOTE** If wall opening height has been adjusted to meet local codes (see Step No. 1 of installation instructions), height dimensions must be adjusted accordingly.



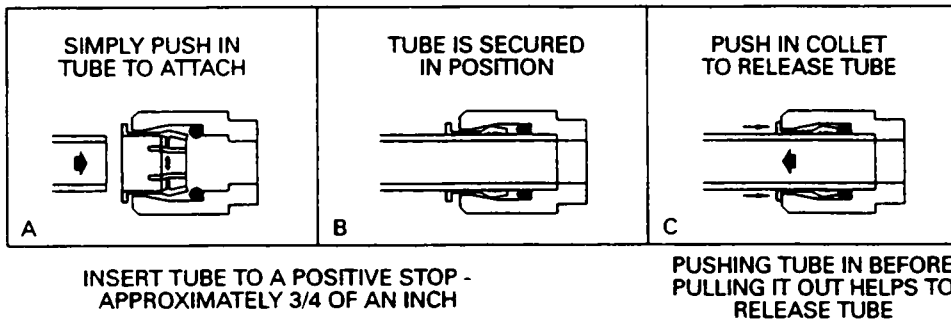
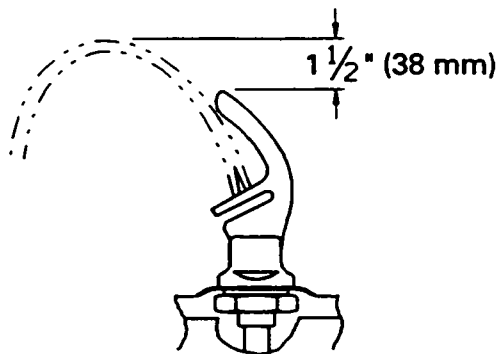


FIGURE 13

Actuation of Quick Connect Water Fittings:

Cooler is provided with lead-free connectors which utilize an o-ring water seal. To remove tubing from the fitting, relieve water pressure, push in on the gray collar while pulling out on the tubing. To insert tubing, push tube straight into fitting until it reaches a positive stop, approximately $\frac{3}{4}$ " (19 mm) (see Figure 13).



CORRECT STREAM HEIGHT

FIGURE 14