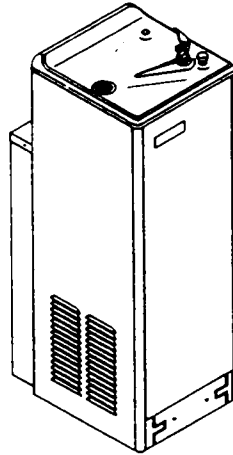


# Halsey Taylor Owners Manual

HOF14-Q

(USES HFC 134A REFRIGERANT)

GLASS FILLER COMPATIBLE: See CAUTIONS in item 6 below.



## Installer

The HOF series coolers are among the easiest to install Floor Models on the market today. To assure you install this model easily and correctly, PLEASE READ THESE SIMPLE INSTRUCTIONS BEFORE STARTING THE INSTALLATION. CHECK YOUR INSTALLATION FOR COMPLIANCE WITH PLUMBING, ELECTRICAL AND OTHER APPLICABLE CODES. After installation, leave these instructions inside the cooler for future reference.

## IMPORTANT

ALL SERVICE TO BE PERFORMED BY AN AUTHORIZED SERVICE PERSON

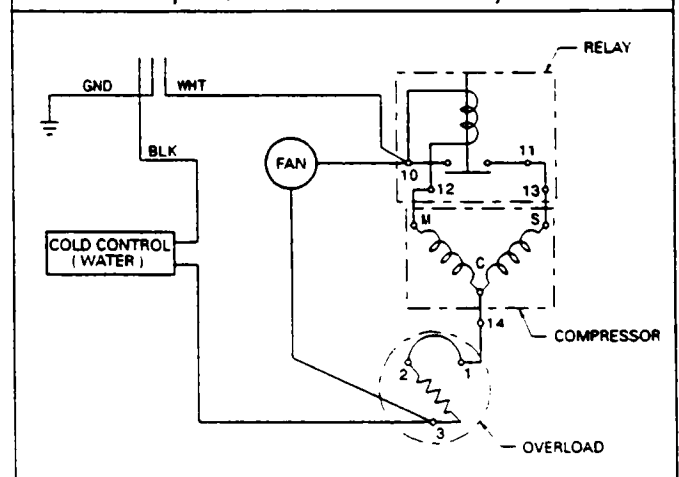
1. Insure proper ventilation by maintaining 4" (min.) clearance from cabinet louvers to wall on each side of cooler.
2. Water supply 3/8" IPS. Waste 1-1/4" IPS. Contractor to supply waste trap and service stop valve in accordance with local codes.
3. Connecting lines should be thoroughly flushed to remove all foreign matter before being connected to cooler. This cooler is manufactured in such a manner that it does not in any way cause taste, odor, color or sediment problems. If a taste, odor or sediment problem is prevalent, try installing our water filter module, Part No. 73-15242-51-550, on the supply line.
4. Electrical: Insure power supply is identical in voltage, cycle and phase to that specified on the cooler data plate. NEVER wire compressor directly to the power supply. When cooler is installed outdoors, a Ground Fault Circuit Interrupter (GFCI) should be used.
5. For TROUBLE SHOOTING AND MAINTENANCE GUIDE, see page 3.
6. Halsey Taylor has glass fillers and glass filler plumbing kits specifically designed for use in your water cooler. Check local listings for a Halsey Taylor dealer near you.

**WARNING: Warranty is voided if:**

- The plumbing kit or glass filler is not specified for use by Halsey Taylor for this particular model.
- Installation is not made in accordance with current Halsey Taylor instructions.

## WIRING DIAGRAM

This drawing is merely for illustrating the components of the electrical system.



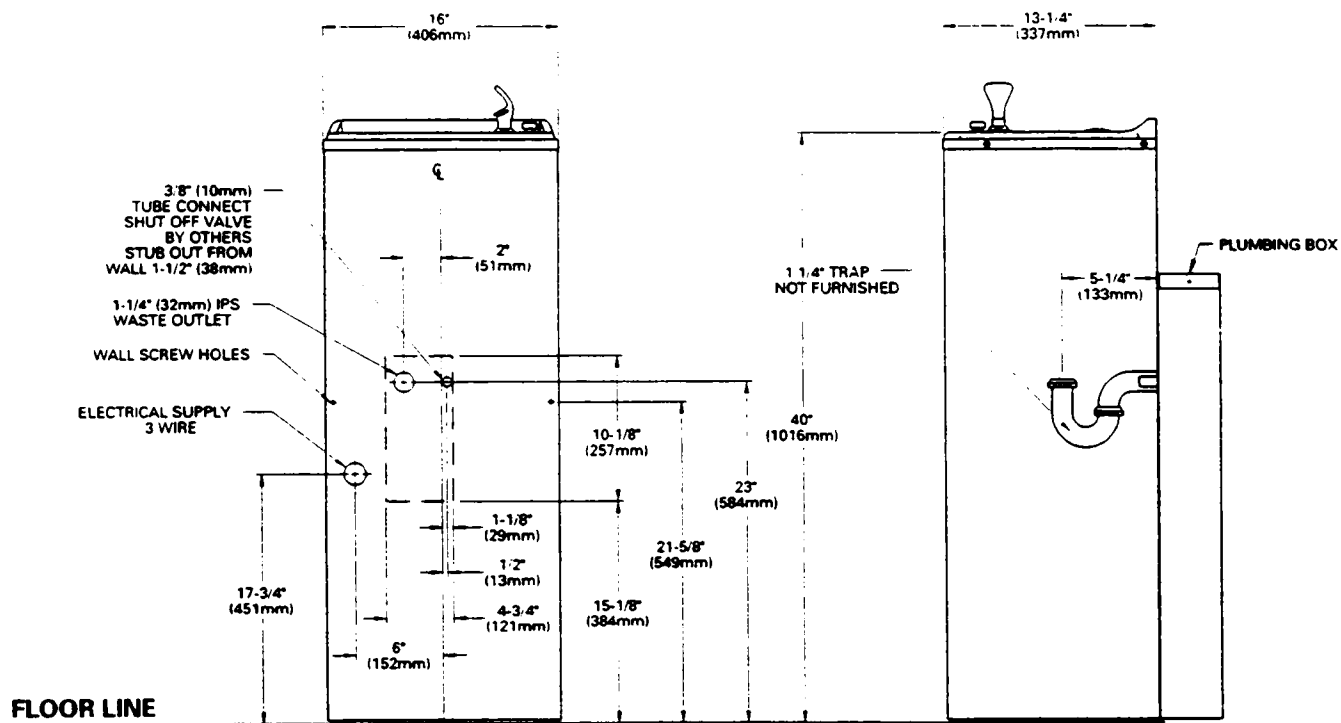


FIG. 1

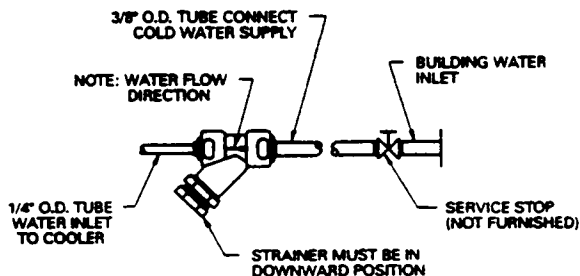
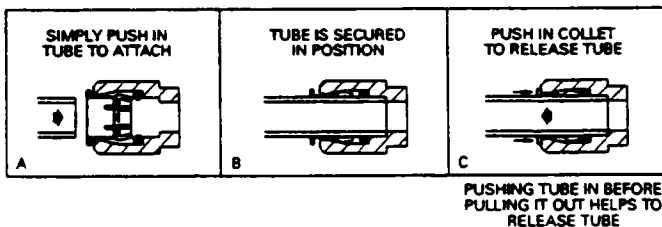


FIG. 2

### OPERATION OF QUICK CONNECT FITTINGS



### TRAP INSTALLATION

1. Mount the trap as shown in Figure 1. (trap not furnished) Install trap inside of the cooler cabinet and exit plumbing thru the opening provided on the rear of the cabinet into the plumbing box.

NOTE: With slight modifications, rough-in heights from 16-1/2" to 24-3/8" can be accommodated. 2" maximum may be cut from the tail piece provided.

2. Install 3/8" IPS female x 3/8" compression straight service stop to building water inlet stub. (service stop not furnished)

### INSTALLATION OF COOLER

3. Remove the two (2) screws and toe plate at bottom of the cooler. Then remove the two (2) screws and the front panel and set aside.
4. Remove the slip nut and gasket from trap and install them on the cooler waste line making sure that the end of the waste line fits into the trap. Assemble the slip nut and gasket to the trap and tighten securely.

5. Connect cooler to building supply line with a shut-off valve and water line between the valve and the cooler (see Fig. 2). Route water line up through plumbing box and into cooler through opening on rear of the cooler.

NOTE: If required, the water inlet line to cooler may be cut to a desired length. However, if water line is cut, all burrs must be removed from outside of tube before it is inserted into the Y-strainer.

## PUSH BUTTON VALVE ADJUSTMENT

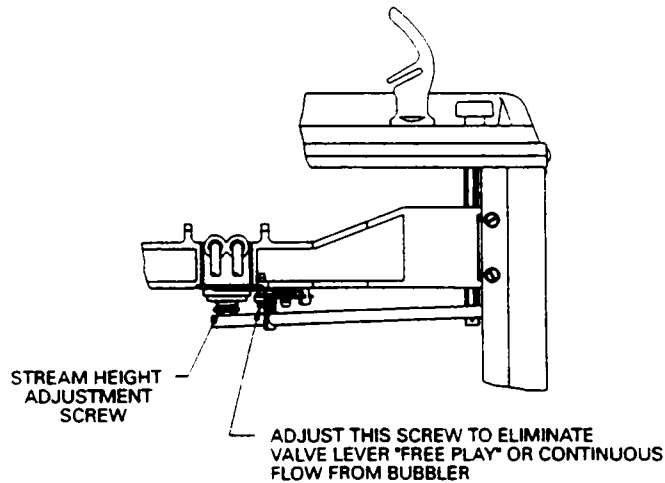


FIG. 4

### START UP

- 7). Turn on the building water supply and check all connections for leaks.
- 8). Depress push button until all air is bled from cooler water system. A steady stream flow assures all air is removed.
- 9). Stream height is factory set at 35 PSI. If supply pressure varies greatly from this, readjust stream height to approximately 1-1/2" above the bubbler guard by turning adjustment screw on regulator. ( See push button valve adjustment - Figure 4).
- 10). Recheck all water and drain connections with water flowing through system.
- 11). Plug cooler power cord into building electrical receptacle protected by a Ground Fault Circuit Interrupter (GFCI).
- 12). Replace the front panel and secure by replacing the two (2) screws . Then replace the toe plate and its two (2) screws and tighten securely.

### PROTECT FROM FREEZING

- 13). If the ambient air temperature drops below freezing the cooler needs to be drained of all water by blowing out the evaporator and water lines and draining the drain trap.

### TROUBLE SHOOTING & MAINTENANCE

- 1). **Bubbler:** If mineral deposits build up in the orifice, they can be removed by using a round file or small diameter wire.  
CAUTION: Care must be taken not to damage the orifice.
- 2). **Stream Regulator:** To adjust stream height see Instruction No. 9 under "START UP"
- 3). **Temperature Control:** Factory set for 50°F. water ( $\pm 5^\circ$ ) under normal conditions. For colder water, adjust screw on Item No. 7 (see page 4).  
CAUTION: Do not force screw against stops. Turn clockwise for colder water, counterclockwise for warmer water.
- 4). **Ventilation:** Condenser fins and louvers should be periodically cleaned with a brush, air hose or vacuum cleaner.
- 5). **Lubrication:** Motors are lifetime lubricated.
- 6). **CAUTION:** Cleaning of Golden Bronzestone Models requires special care. Outer surfaces must be cleaned with a mild detergent or mixture of vinegar and water only, rinsed and wiped dry. Abrasive and acidic cleaners may eventually damage the Golden Bronzestone finish.

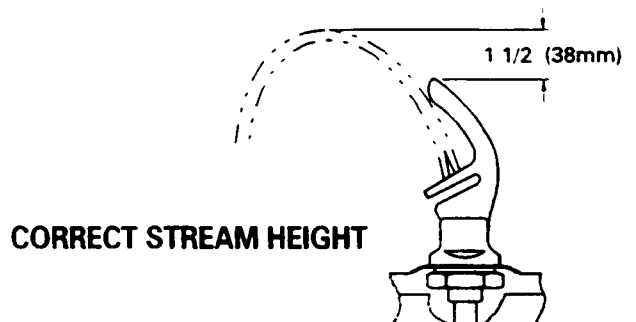
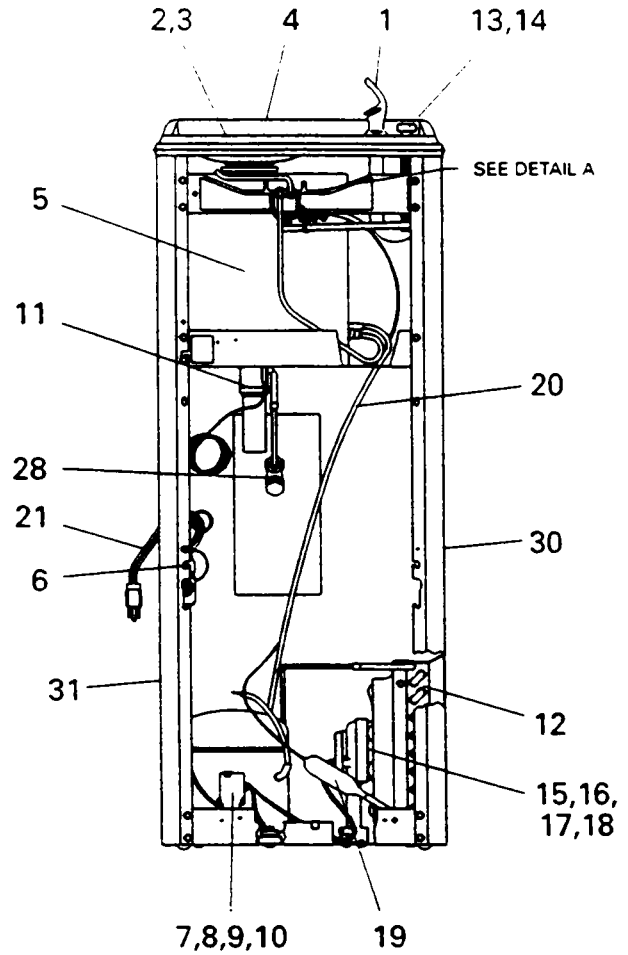


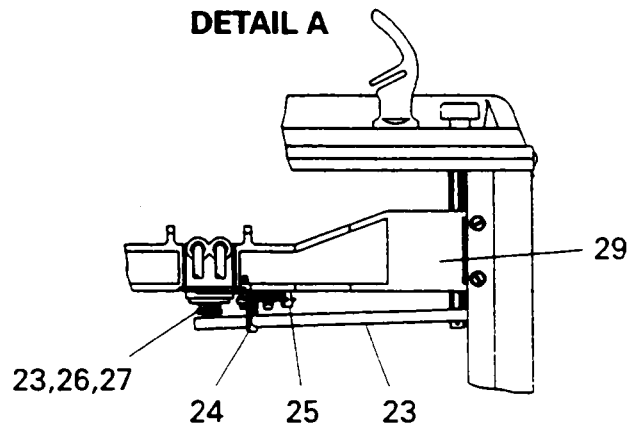
FIG. 5

ITEMIZED PARTS LIST

| ITEM NO. | PART NO.        | DESCRIPTION                 |
|----------|-----------------|-----------------------------|
| 1        | 40-09423-08-640 | Bubbler                     |
| 2        | 10-26399-31-640 | Drain Plug                  |
| 3        | 16-02705-08-640 | Strainer Plate              |
| 4        | 17-14037-42-590 | Receptor                    |
| 5        | 66327C          | Evaporator                  |
| 6        | 31513C          | Cold Control                |
| 7        | 35762C          | Compressor Serv. Pak        |
| 8        | 31027C          | Overload/Relay Assy         |
| 9        | 19-42439-01-550 | Electrical Shield           |
| 10       | 35766C          | Relay Cover                 |
| 11       | 45341C          | Precooler                   |
| 12       | 66252C          | Condenser                   |
| 13       | 10-15434-31-640 | Cap Push Button             |
| 14       | 10-15075-31-550 | Push Button Stem            |
| 15       | 31490C          | Fan Motor                   |
| 16       | 10-42095-43-730 | Fan Blade                   |
| 17       | 70018C          | Fan Blade Nut               |
| 18       | 40-26720-43-730 | Fan Motor Bracket           |
| 19       | 66202C          | Drier                       |
| 20       | 66245C          | Heat Exchanger              |
| 21       | 35873C          | Power Cord                  |
| 22       | 10031C          | Regulator Retaining Nut     |
| 23       | 26860C          | Regulator Lever             |
| 24       | 26861C          | Pivot Bracket               |
| 25       | 26862C          | Regulator Retaining Bracket |
| 26       | 50985C          | Regulator Holder            |
| 27       | 61314C          | Regulator                   |
| 28       | 70788C          | Y-strainer                  |
| 29       | 55880C          | Regulator Mounting Bracket  |
| 30       | 40-15362-42-830 | Side Panel - Right          |
| 31       | 40-15363-42-830 | Side Panel - Left           |
| NS       | 40-15074-42-830 | Front Panel                 |
| NS       | 27113C          | Box - Mounting              |
| NS       | 27112C          | Cover - Plumbing            |



DETAIL A



**Halsey Taylor**

P. O. BOX 9001  
OAK BROOK, IL 60521  
(708) 574-3500

FOR PARTS, CONTACT YOUR LOCAL DISTRIBUTOR OR CALL 1-800-323-0620  
PAGE 4